



SOLD

ENDLESS POTENTIAL ON A GENEROUS BLOCK.. FIRST TIME OFFERED IN 45 YEARS!

Welcome to 22 Tindle Street, Redbank Plains. A fantastic high-set 3-bedroom residence sitting proudly on an expansive 856 m² block. Bursting with potential, this home offers the perfect canvas for renovation and represents a rare entry-level opportunity to secure a high-value piece of land in one of the region's fastest-growing areas.

Inside, you'll find three generous bedrooms, all carpeted with ceiling fans plus a split system air conditioner in the main bedroom. The kitchen, open-plan living area and adjoining dining space provide a comfortable and practical layout for families, with a beautiful working fireplace, and split system air conditioner. The main bathroom includes a shower, separate bathtub, vanity, and a separate toilet for convenience.

The solid home provides a great foundation to add your own touches, downstairs is a three-car garage and workshop, plus laundry and toilet, making it ideal for tradies, hobbyists, or anyone needing extra storage space.

Outdoors, the large fully fenced yard offers endless potential, plus an entertaining area, there is plenty of room to build your dream pool or store your caravan.

Perfectly positioned in an ever-growing community, 22 Tindle Street is close to schools, shops, parks, and public transport. Enjoy the convenience of being within a few minutes of Town Square Redbank Plains, Collingwood Park Shopping Centre, and a range of quality schools including Redbank Plains State School and Redbank Plains State High School.

PROPERTY HIGHLIGHTS:

Expansive 856m² block

Neat and functional kitchen

3 well-sized bedrooms

3 BED | 1 BATH | 3 CAR

PRICE:
\$797,000

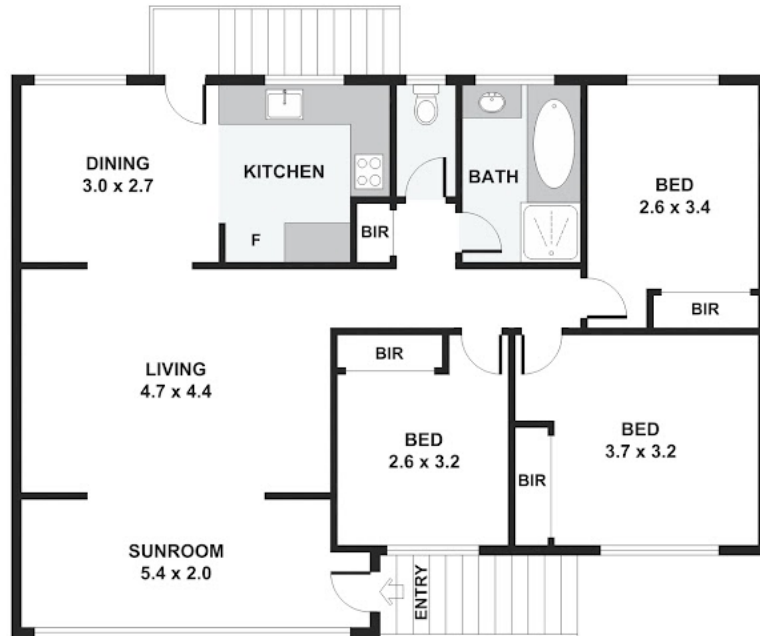
OPEN FOR INSPECTION:
N/A



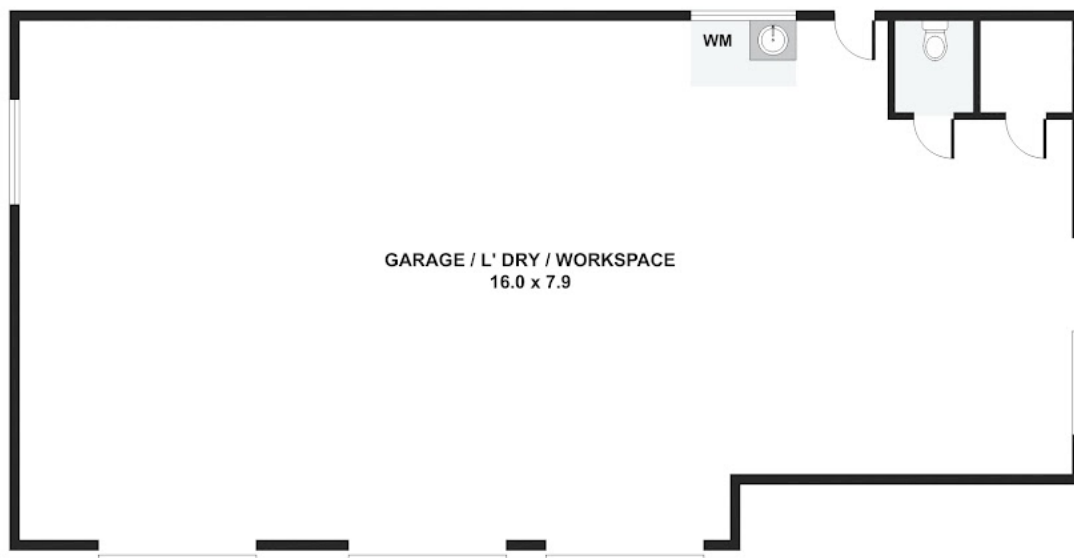
Paul Urquhart
0421956751

propertyolutions@atrealty.com.au
www.atrealty.com.au

22 Tindle Street, Redbank Plains



FIRST FLOOR



GROUND FLOOR

Disclaimer: Please note this floor plan is for marketing purposes and is to be used as a guide only. All dimensions are estimates only and may not be exact measurements.