

SOLD

STYLISH TOWNHOUSE IN THE SOUGHT-AFTER RUNAWAY ROYALE COMPLEX

Open House Cancelled

Located within the highly desirable Runaway Royale complex, this spacious townhouse presents an outstanding opportunity to secure a home or investment in one of the Gold Coast's most convenient lifestyle locations. Offering a versatile layout, strong foundations, and the scope to add your own modern touches, it combines comfort, privacy, and resort-style living.

Step inside and be welcomed by soaring ceilings and open-plan living and dining areas filled with natural light. Freshly painted and updated with new flooring, the interiors create an inviting canvas ready for personalization. The living spaces extend seamlessly onto a private outdoor entertainment area—perfect for relaxing or hosting guests—with plenty of room to create your own tranquil retreat.

The thoughtful floorplan includes three well-proportioned bedrooms. The master suite, located on the ground floor, features a walk-through robe and ensuite, while the upper level offers two additional bedrooms—ideal for family members or visiting guests.

This home is move-in ready yet also provides exciting potential for future upgrades, making it a flexible option for both homeowners and investors alike.

Property Features

Three spacious bedrooms, including ground-floor master suite

Master with walk-through robe and ensuite

Open-plan living and dining with natural light and garden outlooks

Private outdoor entertaining area with yard space

Internal access from single garage plus ample visitor parking

3 BED | 2 BATH | 2 CAR

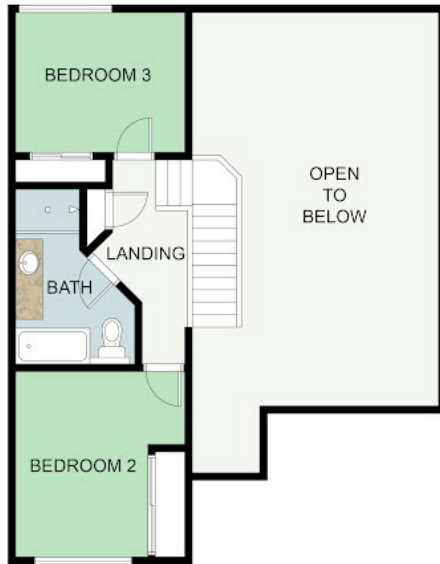
PRICE:
\$820,000

OPEN FOR INSPECTION:
N/A

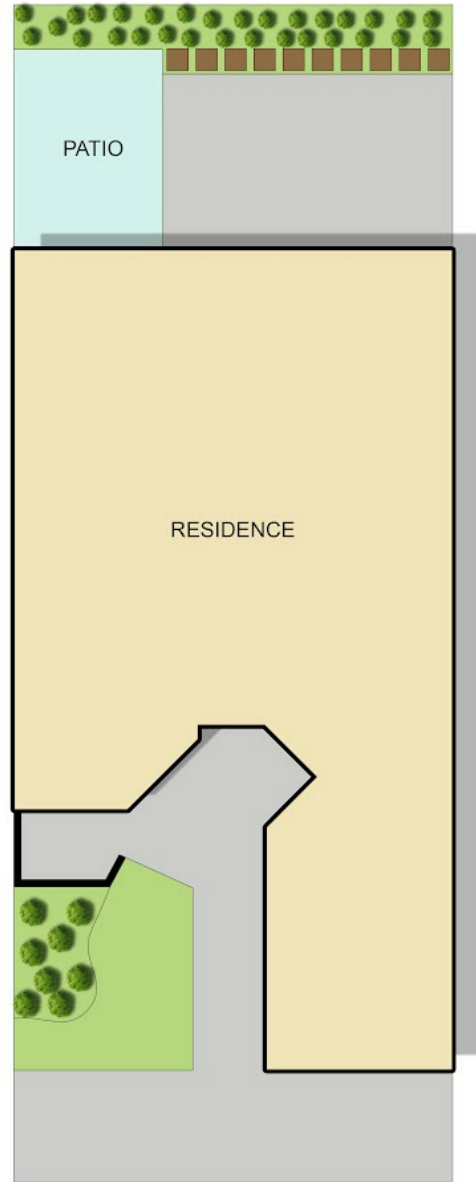


Tony Brown
0418961500
tonybrown@atrealty.com.au
www.atrealty.com.au

CONTACT:
TONY BROWN
tonybrown@realty.com.au
0418 961 500
@realty



FIRST FLOOR PLAN



SITE PLAN



GROUND FLOOR PLAN

Disclaimer: Please note this floor plan is for marketing purposes and is to be used as a guide only. All dimensions are estimates only and may not be exact measurements.

The floorplan and site plan are indicative only and not to scale, all measurements indicated may not be accurate. All buyers must do their own investigations into the accuracy of these plans.

Tony Brown
0418961500
tonybrown@atrealty.com.au
www.atrealty.com.au

