

SOLD

OWNER OCCUPIED, STUNNING, NORTH FACING , LEVEL 7 APARTMENT WALK TO STATION AND WESTFIELD , WITH STORAGE CAGE, INVESTORS NOTE \$600 PER WEEK RENT!!!

Strata Report Available

Strata - \$906, Water - \$173, Council - \$370 pq approx, 11 years old building, 105 sqm inc car space and storage

Step into this modern Level 7 apartment living at this beautifully positioned 2-bedroom, 2-bathroom residence in the heart of Warwick Farm. Nestled within a contemporary complex at 3-5 Browne Parade, this immaculate apartment offers the perfect blend of comfort and convenience for first-time buyers, downsizers, or savvy investors seeking a prime location just 30 kilometres from Sydney's CBD.

The thoughtfully designed layout maximizes space and natural light, featuring two generous bedrooms each serviced by their own bathroom (main being an ensuite) for ultimate privacy and convenience. The open-plan living area flows seamlessly, creating an inviting atmosphere perfect for both relaxation and entertaining. With a secure carport space included, your vehicle will be protected while adding valuable convenience to your daily routine via a storage cage too.

- Walk to Warwick Farm station , Westfield and Liverpool Hospital
- Level 7, North Facing apartment with expansive views from the balcony
- Two spacious bedrooms with built-in storage solutions
- Open plan living area with split system A/C that opens to the sunlit and breezy balcony
- Two full bathrooms providing privacy and functionality , main being an ensuite
- Gourmet kitchen with stainless steel appliances, including dishwasher & gas cooking
- Internal Laundry
- Secure carport for one vehicle plus a storage cage
- Contemporary finishes throughout
- Secure , low-maintenance apartment living

Warwick Farm offers an exceptional lifestyle with rich history and modern amenities at your

2 BED | 2 BATH | 1 CAR

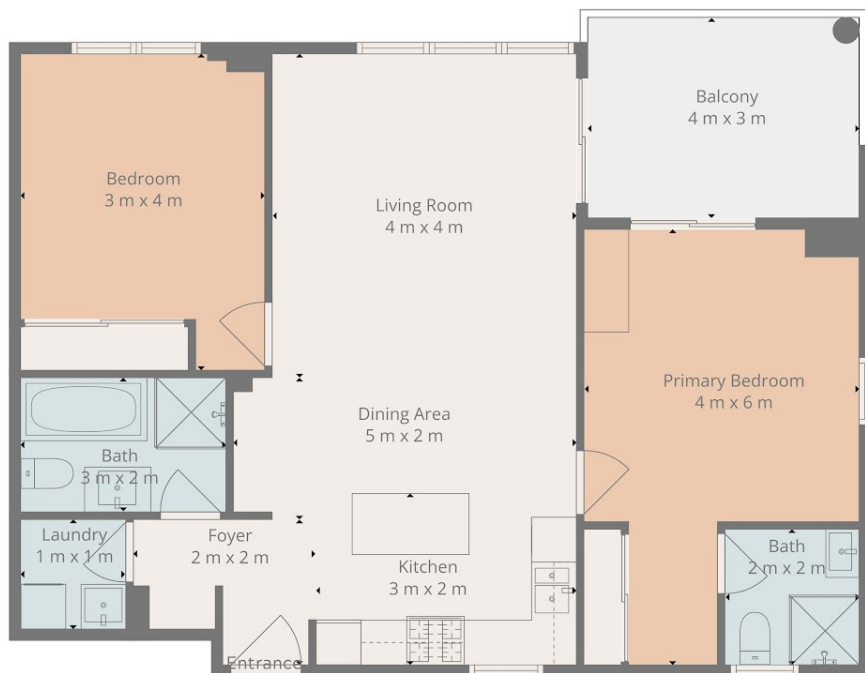
PRICE:
\$520,000

OPEN FOR INSPECTION:
N/A

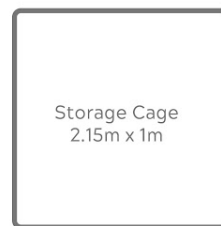
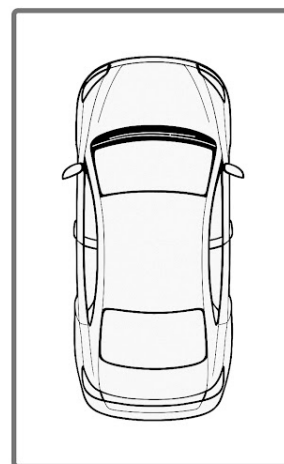


Vivek Uppal
0426425839
vivekuppal@atrealty.com.au
www.atrealty.com.au

Floor Plan
3-5 Browne Parade Warwick Farm NSW 2170



Car Space
5.14m x 2.74m



Storage Cage
2.15m x 1m

VIVEK UPPAL @realty

This floor plan is for illustration only. All measurements, fixtures, and details are approximate and may vary. No responsibility is taken for errors or omissions—buyers and interested parties should rely on their own enquiries.

Disclaimer: Please note this floor plan is for marketing purposes and is to be used as a guide only. All dimensions are estimates only and may not be exact measurements.

Vivek Uppal
0426425839
vivekuppal@atrealty.com.au
www.atrealty.com.au

@realty