



SOLD

PRIVATE ACREAGE RETREAT MINUTES FROM KINGARROY

Set high in a quiet cul-de-sac, this charming 5,458m² property with a large and unique home offers the kind of space and privacy that's hard to find so close to town. Surrounded by established gardens and fruit trees, the entire home feels like your own sanctuary.

Inside, there's plenty of room for a large family, or those who love to entertain. Multiple living areas give you options – both with air con and one with a cosy fireplace – and the dining room flows into a spacious modern timber kitchen with island bench and a huge pantry.

There are four generous bedrooms, including a main with ensuite, built-ins, and its own parents' retreat/sitting room. Polished cypress floors add warmth and beautiful wallpapers and trimming add character, while the house is comfortable in all seasons thanks to the shape and position of the house.

Outside there's a large front deck, plus a shady rear entertaining area (screened) with garden cafe vibes, complete with pizza oven and combustion stove. The entertaining area seats up to 25 adults and is the perfect way to put the pizza oven to good use. The fully fenced yard is home to established gardens, dedicated potting station, shady sitting spots, a greenhouse, chookshed complete with mulberry tree, plus there's plenty of open lawn.

A 12m x 9m shed provides excellent storage and workshop space, with extra height for caravans or boats, plus its own toilet and shower. Town water is connected, along with two 5,000-gallon rainwater tanks.

This property has been lovingly maintained and improved over the years – now it's ready for new owners to move in and enjoy this beautiful and unique home.

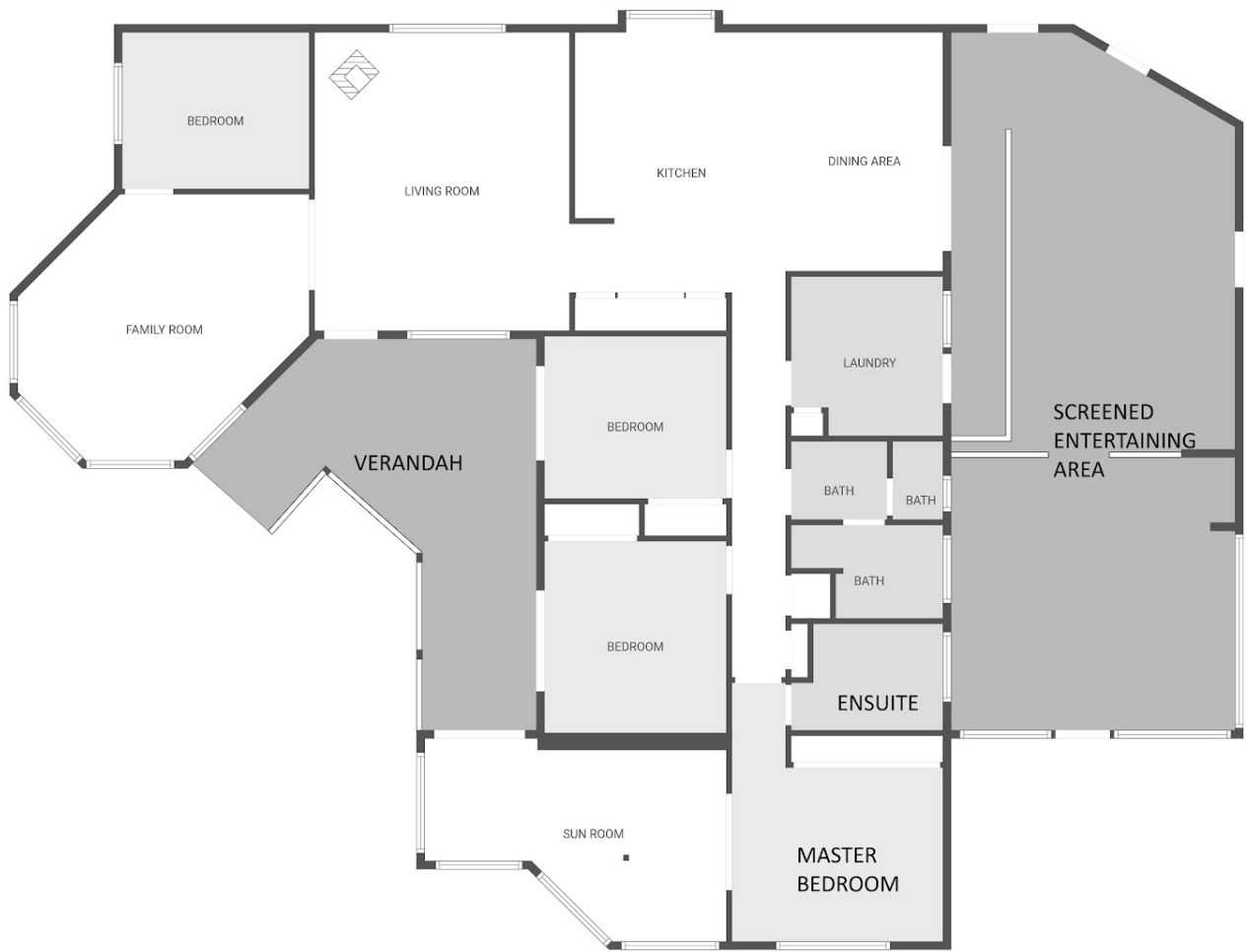
4 BED | 3 BATH | 4 CAR

PRICE:
\$870,000

OPEN FOR INSPECTION:
N/A



Julian Gregson
0421577537
julian.gregson@atrealty.com.au
www.juliangregson.com.au



9 Tidar Court, Kingaroy

Floor plan is provided as indicative layout only. Measurements are not available, floor plan is not to scale. No guarantees provided on accuracy. Exterior elements are not in position.

Disclaimer: Please note this floor plan is for marketing purposes and is to be used as a guide only. All dimensions are estimates only and may not be exact measurements.

Julian Gregson
0421577537
julian.gregson@atrealty.com.au
www.juliangregson.com.au

