

# Sold

5 JORDAN CLOSE, GRAFTON, NSW, 2460

4  | 2  | 3 



## ELUSIVE ELEGANCE

PRICE: \$935,000

Rarely does a property of this calibre enter the Grafton marketplace. Bespoke in design and built by Greg Cole and his team back in 2010, this hidden oasis offers almost 400m<sup>2</sup> of home, spread over a generous 975m<sup>2</sup> allotment overlooking grand gully to the rear. Privacy is a key factor to this property package being tucked away from the quiet cul-de-sac frontage, and when inside, you feel almost neighbour less.

OPEN FOR INSPECTION:  
N/A

The rendered brick façade is stunning, framed by established Magnolias and Gardenias. The formal entry welcomes a bed of polished timber floors including Red Mahogany, Red & Blue Gum, plus Red Ironbark. The high ceilings give depth to the already expansive space with the Scissor Truss section of the home extending that of 3 meters.

The heart of the home has all four chambers including the kitchen/pantry, the media room, family room and dining. The stunning galley kitchen with 'Ice-stone' Caesarstone, waterfall benchtops overlook all living spaces including the alfresco area. Twin ovens, a hide-away dishwasher, soft closing drawers, display cabinetry, a double sink, gas cooktop and a dulcet tone glass splashback, are all lovely upgrades. Behind the kitchen is the most generous of walk-in pantry's that caters for all your needs.

Generous upgrades continue through the home supported by the 6.5kw, 3-phase solar system. Ducted air conditioning services an astonishing, 8 zones. Modern louvre windows and plantation shutters filter air and light to your liking. All windows are tinted and 'invisigaurd' mesh screens are featured in kev areas.




## Kylie Swift // 0488 161 621

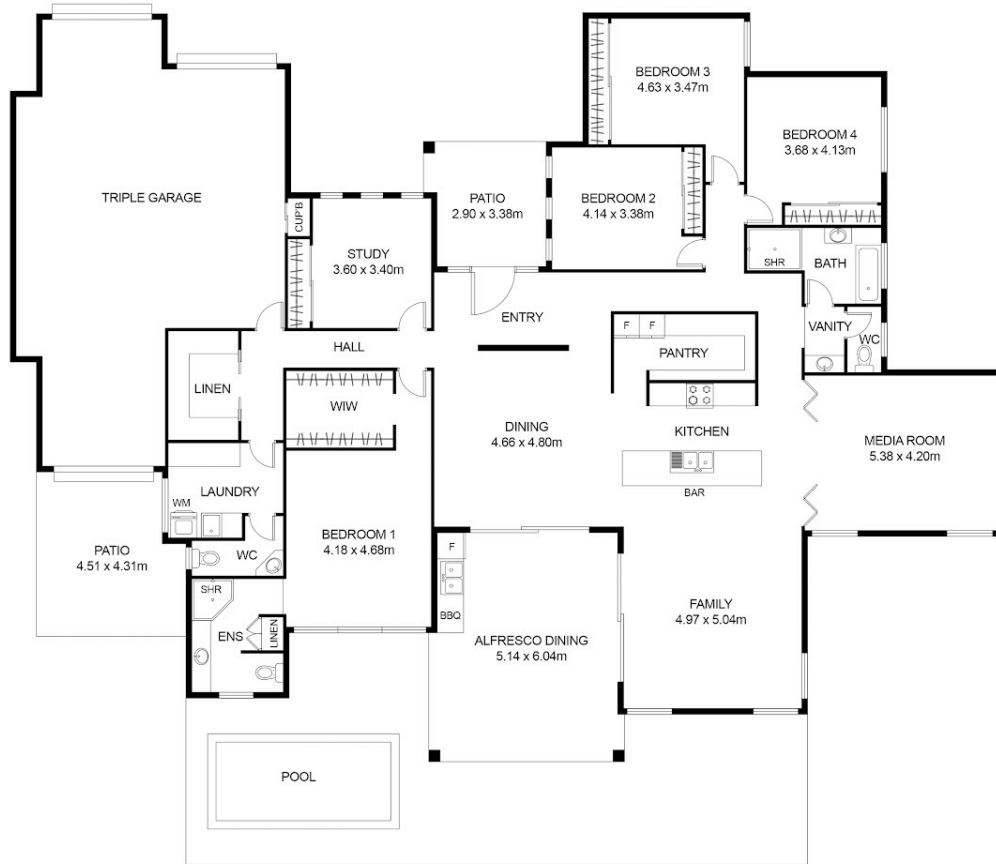
kylie@virtueproperty.com.au // www.virtueproperty.com.au



# Sold

5 JORDAN CLOSE, GRAFTON, NSW, 2460

4  | 2  | 3 



5 Jordon Close Grafton NSW

Total Area - 397.50m<sup>2</sup>

Whilst every attempt has been made to ensure the accuracy of the floor plan contained here, measurements of doors, windows, rooms and any other items are approximate and no responsibility is taken for any error, omission, or mis-statement. This plan is for illustrative purposes only and should be used as such by any prospective buyer.

**Kylie Swift // 0488 161 621**

kylie@virtueproperty.com.au // www.virtueproperty.com.au

