

SOLD

MODERN STUDIO LIVING IN THE HEART OF BEELIAR – MOVE-IN READY!

This immaculate ground floor 1-bedroom, 1-bathroom apartment at 11/6 Barnong Lookout in Beeliar presents an exceptional investment opportunity in one of Perth's most sought-after natural settings. Boasting an impressive 95sqm of thoughtfully designed living space, this apartment maximises comfort and functionality. Ideal for first-home buyers, down-sizers, or investors seeking a ready-to-go property in a well-connected location close to shops, parks, and public transport.

This established complex provides the perfect balance of privacy and shared amenities. The convenience of apartment living, coupled with access to some of Perth's most beautiful natural spaces, creates a lifestyle proposition that tenants actively seek and investors can rely upon. With wetlands literally on the doorstep and the city within easy reach, this property epitomises the best of both worlds that modern renters demand.

Property Highlights:

- Spacious open plan living, dining and kitchen with split system air conditioning.
- Access to a shared BBQ area for socialising and outdoor enjoyment.
- Kitchen with cupboards, pantry, electric stove, oven and range hood.
- Appliances included dryer and washing machine.
- Spacious bedroom with built in robe.
- Bathroom combined with laundry.
- Covered alfresco.
- Dedicated storage room.
- Allocated carport space.

Location Highlights:

- Bus stop on Beeliar Drive right outside the complex
- 1km to Beeliar IGA
- 1.5km to Beeliar Village
- 1.7km to Beeliar Primary School
- 4.9km to Cockburn Gateways Shopping Centre
- 5km to Cockburn Train Station
- 5.2km to Coogee Beach
- 6.3km to Lakeland Senior High School

1 BED | 1 BATH | 1 CAR

PRICE:
\$560,000

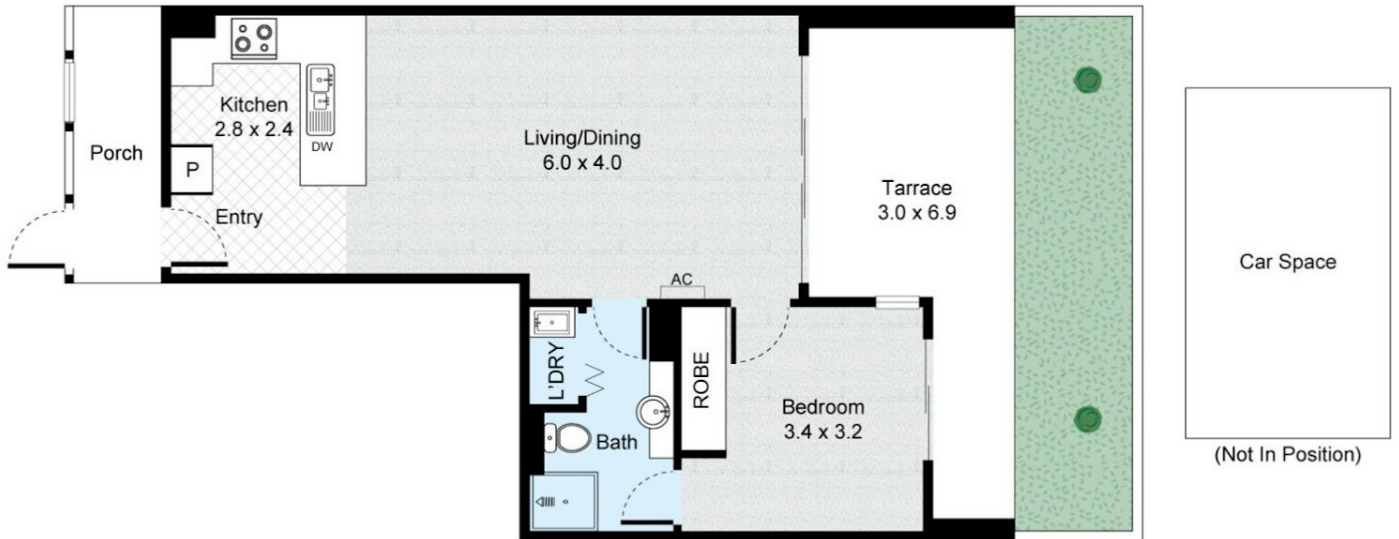
OPEN FOR INSPECTION:
N/A



Syed Mazher
0426520114
syed@atrealty.com.au
www.atrealty.com.au

Unit 6, 11 Barnong Lookout , Beeliar Western Australia

1 Bed 1 Bath 1 Car



FLOOR PLAN

CAR SPACE

Disclaimer: Please note this floor plan is for marketing purposes and is to be used as a guide only. All dimensions are estimates only and may not be exact measurements.

