



# SOLD

## ELEGANT PRIVATE HAVEN WITH PRESTIGIOUS ADDRESS.

Elevated elegance meets modern comfort in this striking split-level home, perfectly designed for both relaxed family living and effortless entertaining. The elongated ceilings and panoramic windows flood the home with natural light creating an airy and expansive feel throughout the home while the front and back decks lead effortlessly off the main living area expanding the entertaining possibilities.

A spacious and welcoming foyer sets the tone, leading into thoughtfully designed utility areas currently configured as a secondary living room plus office with its own private entrance or 4th bedroom. The versatility of this home is perfectly suited to the evolving needs of a growing family. The extensive upgrades also include a sun reflective roof.

### Main Level comprises:

- \* Perfectly placed modern kitchen with servery to front deck and suspended concrete pool.
- \* Kitchen features granite benchtops, premium appliances and ample storage perfect for both everyday living and entertaining.
- \* Well appointed Laundry leading outside to line.
- \* Convenient third Powder room.
- \* Open plan kitchen to dining and informal lounge with aircon.
- \* Original hardwood timber floors throughout.
- \* Front deck encompasses a generous entertaining area with direct access to saltwater suspended concrete pool.
- \* Back entertaining area leading to private and tropical yard.

### Upper Level comprises:

- \* 3 good sized bedrooms.
- \* Main with walk in robe, ensuite, air-con and Plantation Shutters.
- \* 2nd bedroom with plenty of space and built-in robe.
- \* 3rd bedroom with built-in robe and private sundeck.
- \* Well designed bathroom with walk in shower.
- \* Separate toilet.

The Gap is widely regarded as a family friendly community and natural environment for the

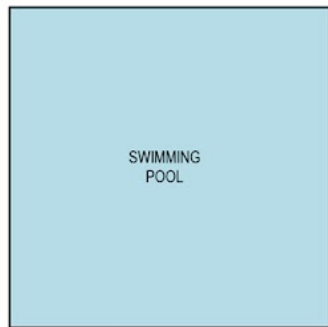
3 BED | 3 BATH | 3 CAR

PRICE:  
\$1,550,000

OPEN FOR INSPECTION:  
N/A

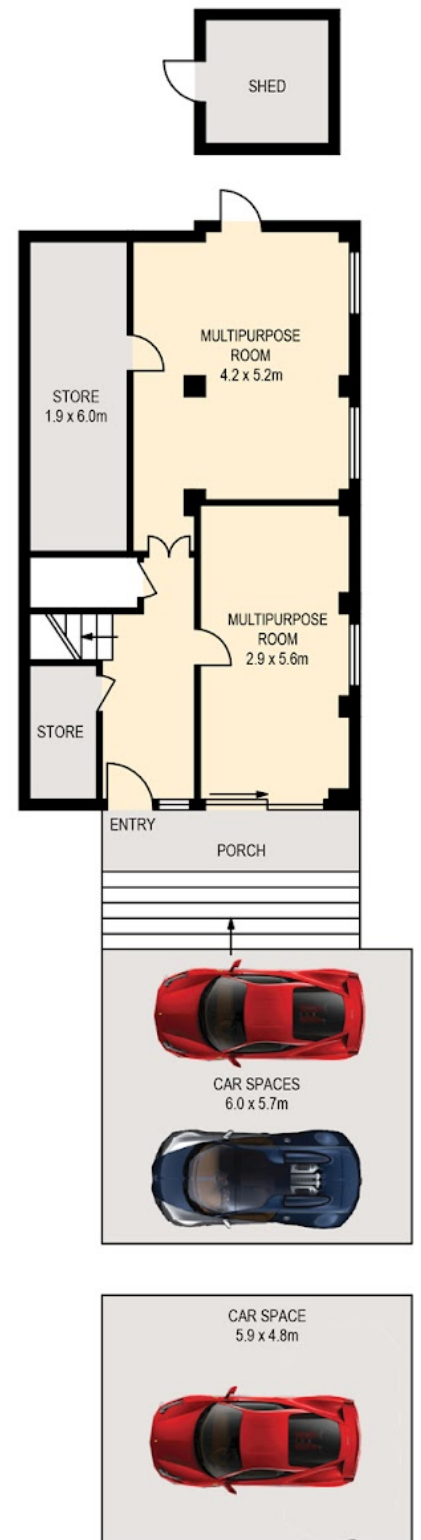


**Trish Holliday**  
0411825808  
trish@atrealty.com.au  
[www.atrealty.com.au](http://www.atrealty.com.au)



PLANS SHOWN ONLY INDICATIVE OF LAYOUT. DIMENSIONS ARE APPROXIMATE.

All information contained herein is gathered from sources we believe to be reliable. However we cannot guarantee its accuracy and interested persons should rely on their own enquiries.



internal 194sqm  
external 144sqm  
total 338sqm



Disclaimer: Please note this floor plan is for marketing purposes and is to be used as a guide only. All dimensions are estimates only and may not be exact measurements.

Created by RealScope©  
www.realscope.com.au

Trish Holliday  
0411825808  
trish@atrealty.com.au  
www.atrealty.com.au

