



**SOLD**

## LARGE, MODERN HOME WITH POOL! BIG BLOCK!

Set on just over half an acre (2,024m<sup>2</sup>) with a peaceful rural feel, this well-presented modern brick and steel frame home offers lots more than you expect in this price range.

Inside, you'll find four bedrooms all with built-in robes and ceiling fans, two bathrooms, and two generous living areas — perfect for families or anyone wanting extra room to spread out. Modern vinyl planking features through much of the home, along with ducted air-conditioning and a fireplace to ensure you and your family are comfortable no matter the season.

The kitchen connects easily to the large covered outdoor entertaining area, which overlooks the in-ground pool and Bali hut — ideal for relaxing weekends or entertaining friends.

A large solar system with battery storage keeps energy costs down and gives you peace of mind, while the property also includes a separate laundry, fully fenced yard, and plenty of open space for gardens, kids, gardening, or pets. This property really is perfect for those who want the rural life, without sacrificing location.

Located in a quiet part of town on the same street as the primary school and just a short walk (around 1km) to Nanango's shops and cafes — this one's all about easy living with a country feel.

Contact Julian Gregson to arrange your private inspection or attend the viewing on Saturday morning at 9am.

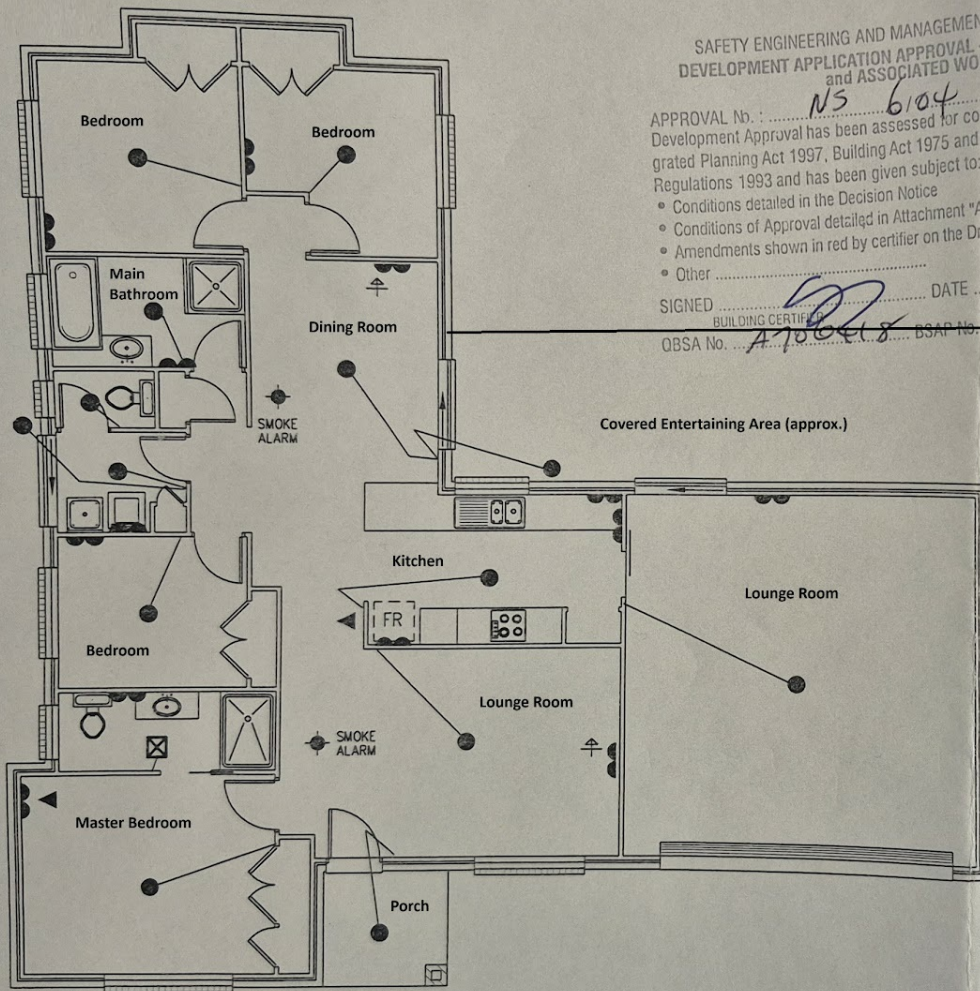
**4 BED | 2 BATH | 4 CAR**

**PRICE:**  
\$680,000

**OPEN FOR INSPECTION:**  
N/A



**Julian Gregson**  
**0421577537**  
julian.gregson@atrealty.com.au  
[www.juliangregson.com.au](http://www.juliangregson.com.au)



SAFETY ENGINEERING AND MANAGEMENT SOLUTIONS PTY LTD  
 DEVELOPMENT APPLICATION APPROVAL - BUILDING/STRUCTURE  
 and ASSOCIATED WORKS

APPROVAL No. : NS 6104  
 Development Approval has been assessed for compliance with the integrated Planning Act 1997, Building Act 1975 and Standard Building Regulations 1993 and has been given subject to:-  
 • Conditions detailed in the Decision Notice  
 • Conditions of Approval detailed in Attachment "A" of Decision Notice  
 • Amendments shown in red by certifier on the Drawings and Specification  
 • Other .....

SIGNED: [Signature] DATE: 29/11/17  
 BUILDING CERTIFIER: [Signature] BSAP No. 6345  
 QBSA No. 178018

Disclaimer: Please note this floor plan is for marketing purposes and is to be used as a guide only. All dimensions are estimates only and may not be exact measurements.