



SOLD

UNDER CONTRACT

The Kris & Amanda Team proudly present 86 Goldstar Circuit, Caboolture to the market for sale.

Perfectly positioned in the highly sought-after Central Springs Estate, this beautifully maintained home offers the ideal blend of modern comfort, low-maintenance living, and everyday convenience.

Designed with lifestyle in mind, this property is move-in ready and perfectly suited to families, downsizers, or investors alike.

Property Features:

- 4 generous bedrooms – all with built-in robes
- 2 stylish bathrooms, including ensuite to the master and a separate toilet
- Contemporary kitchen with Smartstone benchtops and splashbacks, deep enamel sink with high-rise tap, corner pantry, dishwasher, and updated cooking appliances
- Large open-plan living and dining area that flows seamlessly to the covered outdoor entertaining space via stacked sliding doors
- Brand-new Illume skylight, filling the kitchen and living with natural light
- Air-conditioning to living, master, and 4th bedroom + ceiling fans throughout
- Security screens to all doors and windows
- Cool, easy-care tiled flooring throughout
- Double lock-up garage with epoxy flooring and professionally fitted laundry
- Fully fenced, pet-friendly yard with separate dog run for when guests visit
- New garden shed (approx. 1.6m x 2.2m)

Additional Highlights:

- 6.66kW Solarhart solar system for reliable energy efficiency
- 3000L water tank with pump
- Swann 8-camera security system for added peace of mind
- Superior Homes build (approx. 190sqm) – known for quality and thoughtful design
- Rendered brick exterior with Colorbond steel roof
- Low-maintenance 345sqm block

Set in a quiet, family-friendly street, just minutes from Caboolture and Morayfield CBD, schools, shops, parks, and Centenary Lakes sporting complex – this home truly delivers lifestyle and

4 BED | 2 BATH | 2 CAR

PRICE:
\$840,000

OPEN FOR INSPECTION:
N/A

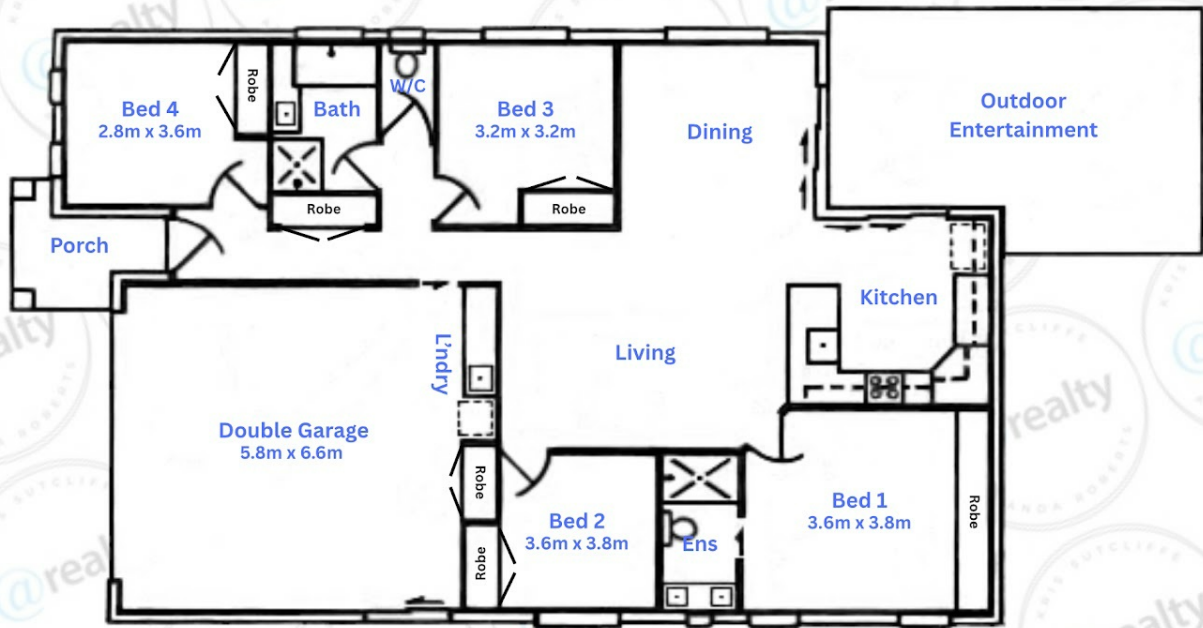


Kris Sutcliffe
0437338665

kris.sutcliffe@atrealty.com.au

www.atrealty.com.au

86 Goldstar Cct, Caboolture



Floor plan is drawn to scale; all measurements are approximate and for illustrative purposes only.

Disclaimer: Please note this floor plan is for marketing purposes and is to be used as a guide only. All dimensions are estimates only and may not be exact measurements.