



# SOLD

## WATERFRONT PARADISE WITH PANORAMIC VIEWS – MACLEAY ISLAND RETREAT

2 Bed | 2 Bath | 2 Car | 870m<sup>2</sup> Waterfront Block

Positioned in one of Macleay Island's most sought-after locations, this stunning 2-bedroom residence with a sunroom offers the rare combination of parkland at the front and direct waterfront access at the rear — a truly unique setting. With panoramic ocean views and tranquil bay breezes, this beautifully designed home delivers the perfect balance of modern comfort and coastal charm.

Set on a generous 870m<sup>2</sup> block, the 263m<sup>2</sup> home maximises its breathtaking surroundings. From the spacious rear deck and entertainment areas to your private path to the water, every detail has been thoughtfully considered to embrace the island lifestyle.

### PROPERTY HIGHLIGHTS

- Park at the front, ocean at the back – a one-of-a-kind location
- Direct waterfront access with panoramic views over Moreton Bay
- Expansive deck & multiple outdoor entertainment zones
- 870m<sup>2</sup> block offering privacy, space & lush gardens
- 28-panel solar system (8.75kW) + full insulation for energy efficiency
- Secure parking for two vehicles with additional storage
- Short ferry ride to mainland (Redland Bay), close to schools & shops

### INSIDE THE HOME

- 2 spacious bedrooms, including a waterfront-facing master suite with a luxurious ensuite & barn door wardrobes
- Modern kitchen with water views, dishwasher drawer, ample bench space & storage
- Open-plan lounge flows seamlessly to the outdoor areas – perfect for relaxing or entertaining
- Bonus study/rumpus room with private entry from the front verandah – ideal for home office or creative studio
- Timber flooring in living areas, with cozy carpeted bedrooms
- Second full bathroom for added convenience
- Reverse-cycle air conditioning, ceiling fans & Pay TV/broadband access

### Outdoor Features

2 BED | 2 BATH | 2 CAR

PRICE:  
\$920,000

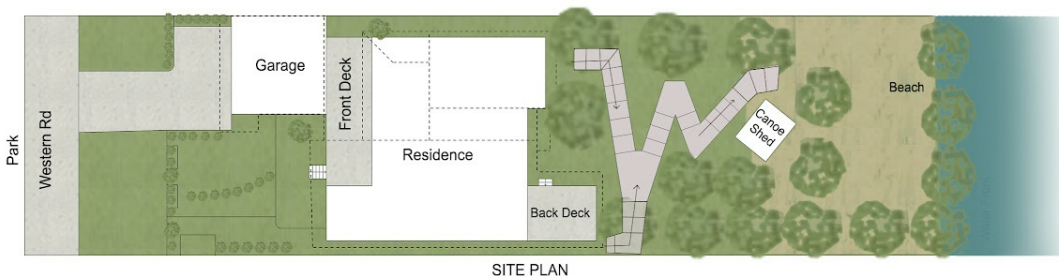
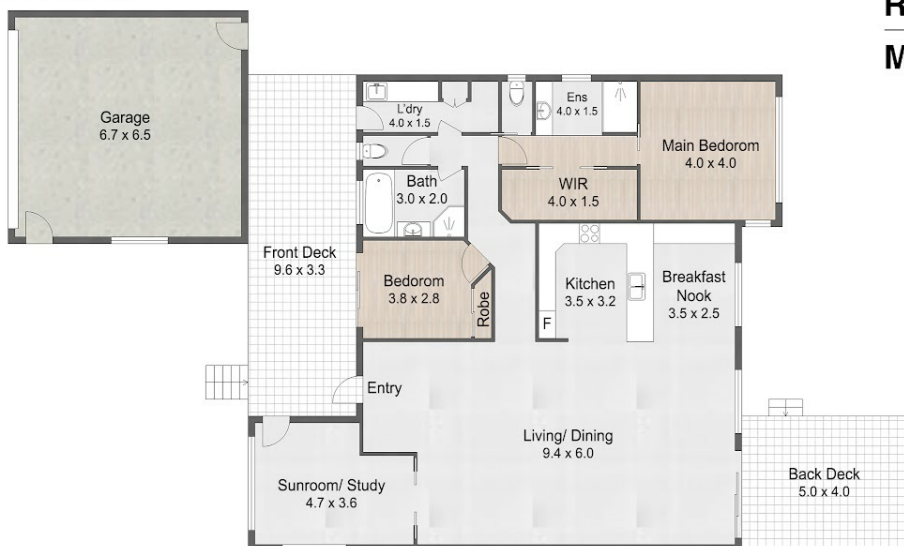
OPEN FOR INSPECTION:  
N/A



**Gaylia Griffiths**  
**0419879037**  
gayliagriffiths@atrealty.com.au  
[www.atrealty.com.au](http://www.atrealty.com.au)

132 Western Road,  
MACLEAY ISLAND

REALTY   
MACLEAY ISLAND



SITE PLAN

2 Bed | 2 Bath | 2+ Car  
Internal: 167sqm | External: 96sqm | Total: 263sqm

Whilst we have made every attempt to ensure the accuracy of the floor plan contained here, measurements are approximate, and no responsibility is taken for any errors, omissions, or misstatement. This plan is for illustrative purposes only.

Disclaimer: Please note this floor plan is for marketing purposes and is to be used as a guide only. All dimensions are estimates only and may not be exact measurements.

Gaylia Griffiths  
0419879037  
gayliagriffiths@atrealty.com.au  
[www.atrealty.com.au](http://www.atrealty.com.au)

@realty