



# SOLD

## "MANDEVILLA"

Perched high atop a mountain approximately 4km from the Healesville township you'll discover this hidden gem set within an environmental/wildlife corridor. Offering a true sense of peace and tranquility, this magnificent architecturally-designed double-storey French Provincial style home was built in the mid 1990's and enjoys wonderful panoramic views overlooking Healesville and the Yarra Valley.

The property offers numerous options including lifestyle change, weekend/holiday retreat or B&B (STCA) You can also take the opportunity to enjoy the array of Healesville's specialty shops, restaurants & cafes as well as visit the many other local tourist attractions all within a short drive.

- Approx. 6.7 acres natural bushland setting
- Good clearing of land around the house
- Four bedrooms with BIRs incl. master with private balcony
- Classic storage box bay windows in master bedroom and lounge
- Two bathrooms incl. main with claw foot bath and balcony access
- Solid timber kitchen with ironbark benches, walk-in-pantry & dishwasher
- Lounge with cozy Nectre wood heater for those cold winter nights
- Hydronic LPG gas heating throughout the house
- R/C split A/C
- Separate dining area
- Ducted vacuum system
- Hand crafted wrought iron fittings
- Tasmanian Oak oiled floors, French double doors
- Electronic security shutters
- Double lock up garage with 4m length (approx.) steel topped work bench
- Drought tolerant, low maintenance garden
- Circular driveway encompassing a large ornamental pond/frog bog
- 3 x 5000 gallon concrete water tanks

Only with a complete inspection of this property will you fully appreciate its uniqueness. Affectionately know as 'the Villa' it represents a great opportunity for anyone seeking peace and tranquility yet still within easy access to the local town.

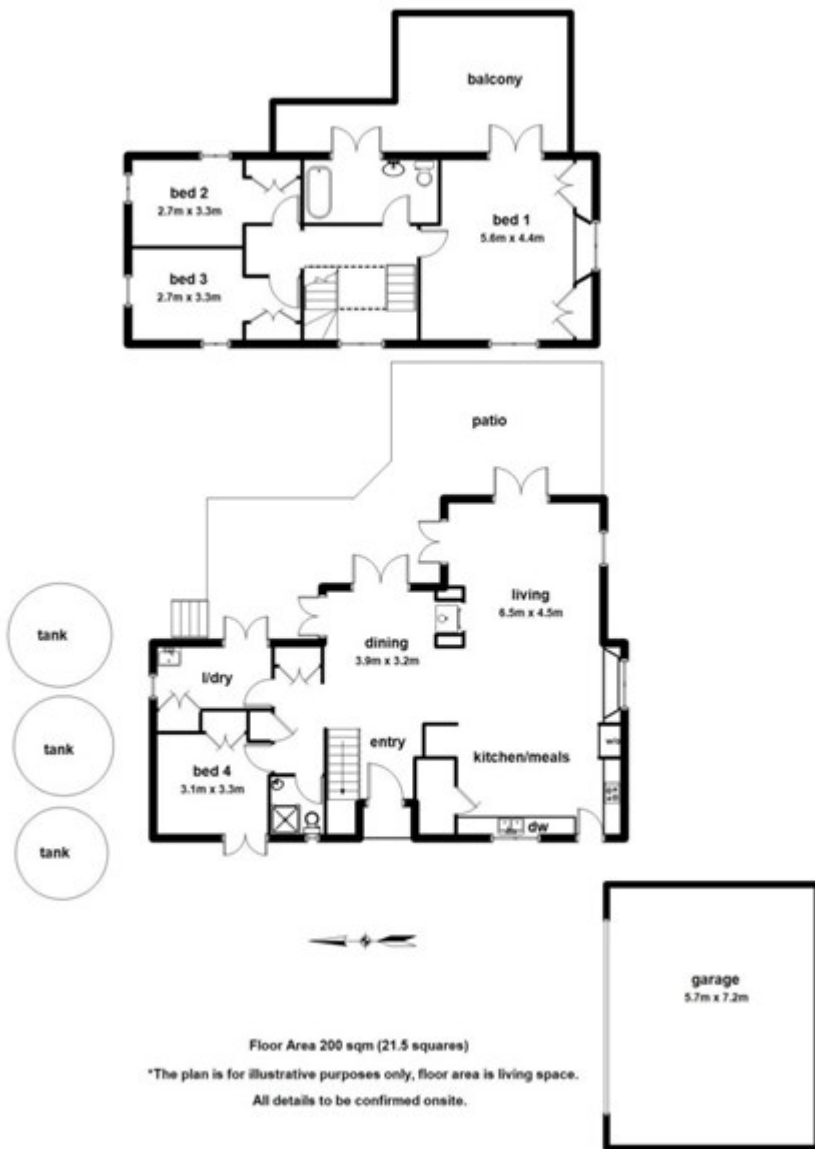
4 BED | 2 BATH | 2 CAR

PRICE:  
\$910,000

OPEN FOR INSPECTION:  
N/A



**David McKee**  
**0419150009**  
david.mckee@atrealty.com.au  
[www.atrealty.com.au](http://www.atrealty.com.au)



Floor Area 200 sqm (21.5 squares)

\*The plan is for illustrative purposes only, floor area is living space.  
All details to be confirmed onsite.

Disclaimer: Please note this floor plan is for marketing purposes and is to be used as a guide only. All dimensions are estimates only and may not be exact measurements.