



SOLD

**ANOTHER GREAT RESULT DELIVERED BY
ASHISH IN WERRIBEE ! IF YOU'RE THINKING OF
SELLING, CALL ON 0404 213 258.**

Ashish Dahal from Local Property Experts proudly present this beautifully crafted family home in the highly sought-after Werribee locale, a residence that seamlessly blends comfort, functionality, and modern style. Designed for easy living and everyday practicality, this stunning home offers a lifestyle defined by quality and convenience.

From the moment you arrive, the home's modern façade, wide driveway, high timber-look entry door, and tastefully landscaped front yard create an inviting first impression. Step inside to discover a light-filled interior where thoughtful design and premium finishes come together in perfect harmony.

At the front of the home, the master bedroom provides a peaceful retreat, complete with a spacious walk-in robe with mirrored doors and custom niches, and a stylish ensuite finished with quality fittings and contemporary tones including privacy locks for added comfort. The additional bedrooms, each fitted with built-in robes, are serviced by a beautifully appointed central bathroom featuring a frameless glass shower with a tiled recess, a sleek vanity with a stone bench-top, and a deep soaking bath positioned beneath a large window, offering both light and relaxation.

The heart of this home is the stunning open-plan kitchen, meals, and family area, where a beautiful skylight floods the space with natural light, creating a bright and inviting atmosphere. The modern kitchen is designed with both style and functionality in mind, featuring a spacious 40mm upgraded stone island bench perfect for meal preparation and casual dining, seamlessly connecting to the family and meals area for effortless entertaining.

High-quality finishes include sleek cabinetry with ample storage and pot drawers, a premium 900mm stainless steel oven and gas cooktop, a large externally ducted rangehood, dishwasher, and a designer mirrored splash-back that enhances both space and light. A walk-in pantry and dedicated butler's space add practicality and convenience, making this kitchen ideal for families who love to cook, entertain, and enjoy everyday living in comfort and style.

4 BED | 2 BATH | 2 CAR

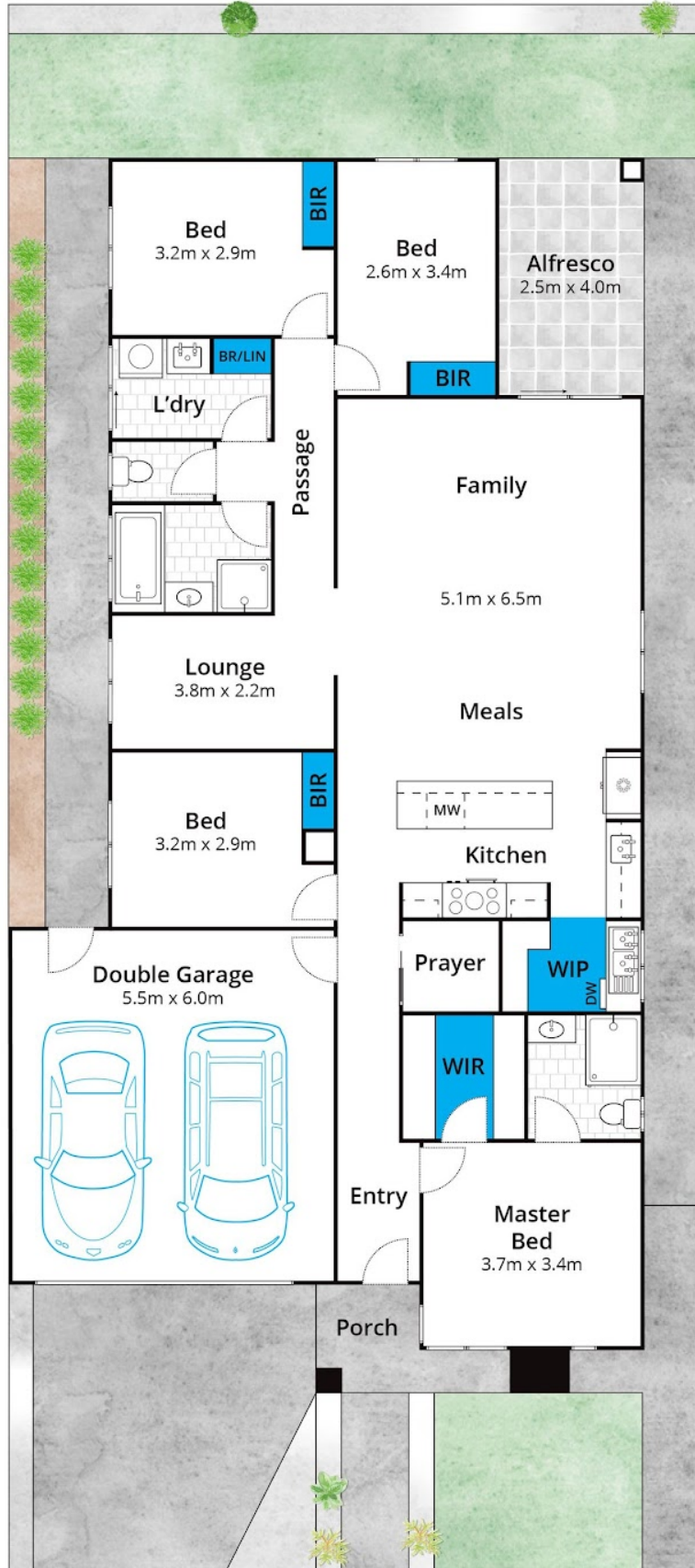
**PRICE:
\$700,000**

**OPEN FOR INSPECTION:
N/A**



**Ashish Dahal
0404213258**

**ashish@localpropertyexperts.com.au
localpropertyexperts.com.au**



LOCAL
PROPERTY EXPERTS

Disclaimer: Please note this floor plan is for marketing purposes and is to be used as a guide only. All dimensions are estimates only and may not be exact measurements.

3 Manstfield Drive, Werribee

LOCAL
PROPERTY EXPERTS

Ashish Dahal
0404213258
ashish@localpropertyexperts.com.au
localpropertyexperts.com.au

@realty