



**SOLD**

## ELEVATED FAMILY LIVING WITH SOLAR SMARTS & SUNSET VIEWS

Perched proudly on the high side of one of Spring Farm's most connected crescents, this four-bedroom home combines modern comfort, everyday practicality, and that warm neighbourhood energy that makes this pocket so sought-after. From its elevated outlook and glowing sunsets to its light-filled living spaces, everything here feels designed for balance, space to spread out, ease to unwind, and a place where you truly feel at home.

Step through the door and you're welcomed by two generous living areas, giving everyone their own zone to relax or retreat. The heart of the home is an expansive open-plan kitchen, dining, and family space filled with natural light and styled for effortless entertaining. The kitchen blends function with 900mm gas cooking, stone benchtops, dishwasher, and flair with a walk-in pantry complete with sink and great flow to the outdoors so you're never far from the conversation.

Four spacious bedrooms include a tranquil master suite with walk-in robe and ensuite, while the remaining rooms are perfectly placed for family living or guests. There's ducted air conditioning and ceiling fans throughout, plus a 5.5 kW solar system with battery that keeps energy bills low and comfort high smart living that simply makes sense.

Outside, the private backyard offers a peaceful setting for BBQs, pets, or playtime. There's side access behind the fence for your trailer or small van, plus extra off-street parking for visitors or extra vehicles, a rare and practical bonus.

From the front, you'll capture those stunning afternoon skies, the kind of sunsets that stop you for a moment. Just a few steps from your door, the local playground and park invite easy evening strolls, kids on scooters, and relaxed chats with the neighbours. Here, it's not just a street, it's a community that still waves hello.

This is the kind of home that feels good from the moment you arrive. A home that works hard for busy families, entertains beautifully on weekends, and belongs to a suburb where everything you need; shops, schools, and nature is right within reach.

### Key Features

\* 4 bedrooms | 2 bathrooms | 2 living zones

4 BED | 2 BATH | 2 CAR

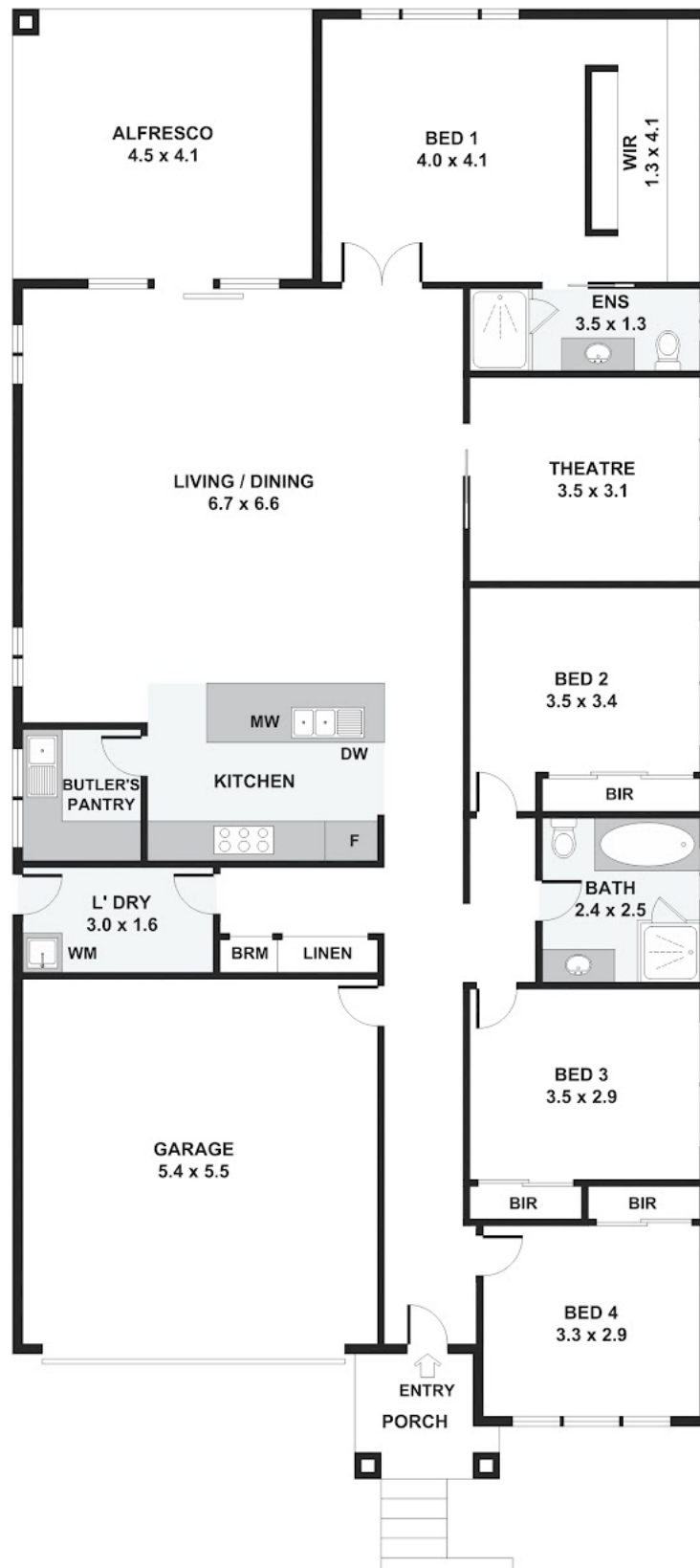
PRICE:  
\$1,120,000

OPEN FOR INSPECTION:  
N/A



**Natasha Williams**  
0449281201  
natasha@atrealty.com.au  
[soldindilly.com.au](https://soldindilly.com.au)

# 57 Jennings Crescent, Spring Farm



Disclaimer: Please note this floor plan is for marketing purposes and is to be used as a guide only. All dimensions are estimates only and may not be exact measurements.

Please note: All stated dimensions are approximate only. Particulars given are for general information only and do not constitute any representation on the part of the vendor or agent.