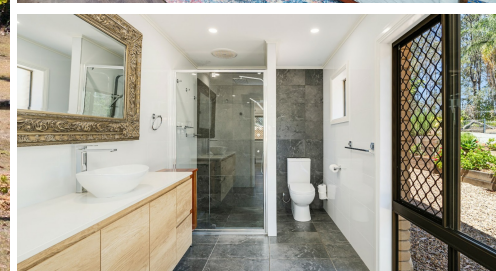


558 TEDDINGTON ROAD, TINANA SOUTH, QLD, 4650



# FOR SALE

## ELITE TREE-CHANGE SANCTUARY

Exquisitely Unique Tree-Change Property – 558 Teddington Rd, Tinana QLD  
Agents: Sean Coulton & Jude Lawrence | Impact Property Group

Set in a peaceful, leafy location, this contemporary split-level brick home offers modern luxury, rural tranquillity, and resort-style living across 2.02 hectares. Designed with high ceilings, breezy living spaces, and abundant natural light, it's the ultimate tree-change lifestyle — just minutes from Maryborough, close to schools and shops, and within easy reach of the beaches of Hervey Bay.

### Property Highlight

**4 Spacious Bedrooms** – Including a newly renovated huge lower-level master suite is beautifully secluded at the far end of the home, offering ultimate privacy and a sense of sanctuary, complete with a spa-inspired ensuite featuring a double vanity, shower with premium finishes.

**Split-Level Design** – Upper level features dining, kitchen, 3 bedrooms and study; lower level opens to a large living area flowing seamlessly to outdoor entertaining zones.

**Gourmet Chef's Kitchen** – Stone benchtops, 5-burner gas cooktop, wall oven, dishwasher, large angled island, and casual breakfast nook.

**Indoor & Outdoor Entertaining** – Full-length verandas, multiple alfresco areas, and a lagoon-style resort pool.

**Off-Grid Ready** – 30 solar panels with 19.2 KW battery, bore water with filtration, a dam, and over 100,000L of freshwater tanks.

**Sheds & Workshop** – 12m x 8m shed with 12m x 4m undercover caravan space plus 10m x 10m powered shed with workshop.

**Car Accommodation** – 2 car plus 3rd carport with ample additional parking areas

**Comfort & Convenience** – Air conditioning, ceiling fans, high ceilings throughout plus an abundance of storage space.

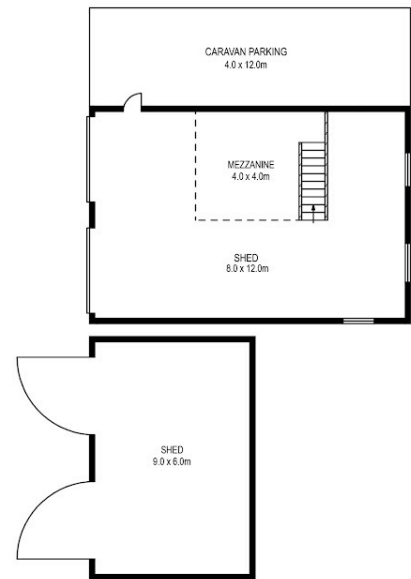
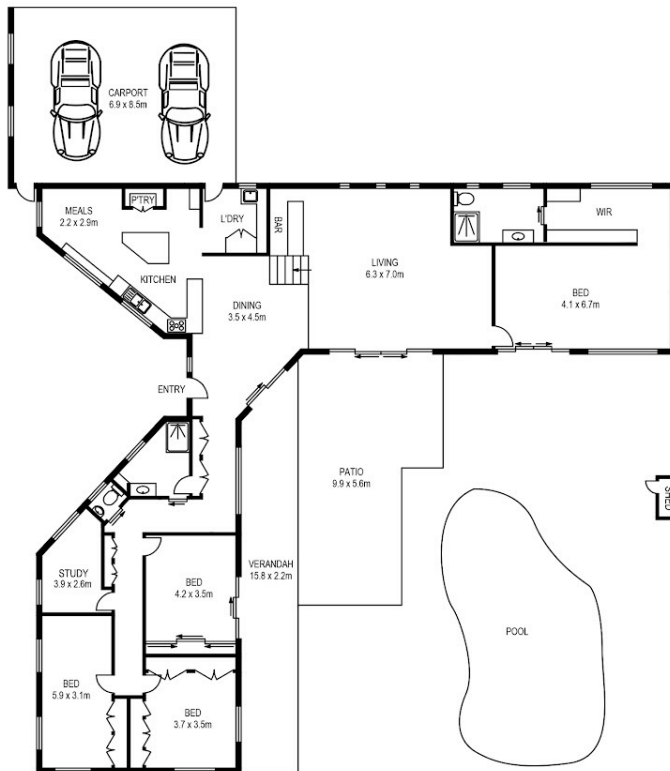
**4 BED | 2 BATH | 3 CAR**

**PRICE:**  
Contact Agent

**OPEN FOR INSPECTION:**  
N/A



**Sean Coulton**  
**0447389260**  
sean@impactpg.com.au  
Impact Property Group



## 558 TEDDINGTON ROAD, TINANA SOUTH

PLANS SHOWN ONLY INDICATIVE OF LAYOUT. DIMENSIONS ARE APPROXIMATE.  
All information contained herein is gathered from sources we believe to be reliable.  
However we cannot guarantee its accuracy and interested persons should rely on their own enquiries.



CREATED BY PROPERTY PIXEL  
WWW.PROPERTY-PIXEL.COM.AU

Disclaimer: Please note this floor plan is for marketing purposes and is to be used as a guide only. All dimensions are estimates only and may not be exact measurements.