



**SOLD**

## SPACIOUS FAMILY HOME WITH ROOM TO GROW

Wright Way Realty Jervis Bay presents a fantastic new home opportunity, situated on a generous 642sqm parcel in a family-friendly enclave, just moments from schools, shops, and transport. This visually pleasing single-level home seamlessly blends contemporary design with generous living zones.

- @ Excellent street appeal with a dark roof, blond bricks and a portico
- @ Generous open plan living and dining spaces, plus a designated study
- @ Internal living spaces with stylish, functional & durable tiles throughout
- @ Master suite with en-suite and walk-in robe, all others have BIRs
- @ Covered alfresco is perfect for relaxing or entertaining family & friends
- @ Kitchen boasts a gas cooktop, plus a huge fridge and bench spaces
- @ Double lock-up garage to secure your vehicles, plus internal access
- @ Recently refreshed with a painted driveway, entrance and bedrooms
- @ Secure, level rear yard, with low-maintenance, easy-care gardens
- @ Call Glenn Wright now to inspect this fantastic new opportunity.

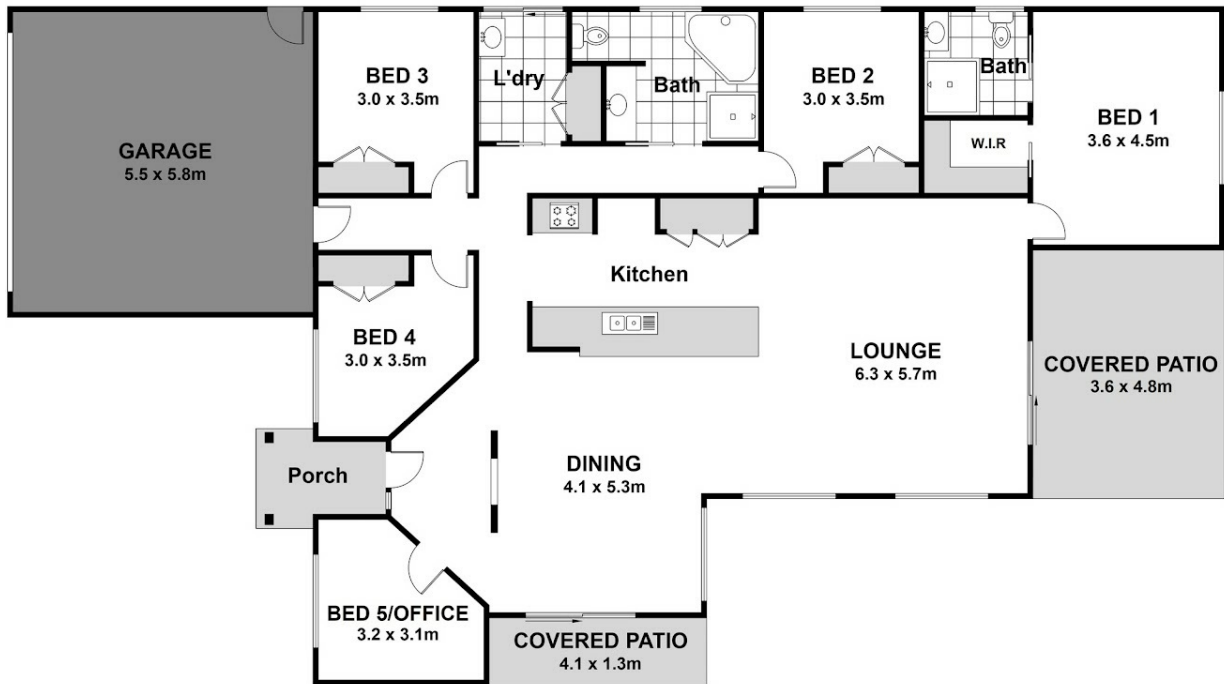
**4 BED | 2 BATH | 2 CAR**

**PRICE:**  
**\$790,000**

**OPEN FOR INSPECTION:**  
**N/A**



**Glenn Wright**  
**0408120866**  
glenn.wright@atrealty.com.au  
Wright Way Realty



## 48 Carmel Drive, SANCTUARY POINT



Scale is in Metres & indicative only & dimensions are only approximate.  
 The information contained & gathered herein is we believe from sources to be reliable.  
 We can not guarantee it's accuracy & persons should rely on their own enquiries.



Disclaimer: Please note this floor plan is for marketing purposes and is to be used as a guide only. All dimensions are estimates only and may not be exact measurements.