



FOR SALE

EMBRACE BREATHTAKING WATER VIEWS AND THE SERENITY FOUND IN THE HEART OF ORFORD.

Experience the allure of this exceptional four-bedroom coastal retreat on Sea View Crescent in the picturesque seaside town of Orford. With breathtaking ocean and island views, this residence perfectly blends tranquillity with the vibrant beauty of nature, making it an ideal escape from the hustle and bustle of city life. Spanning an impressive 314 square meters and set on a generous 926 square meter block, this double-storey home offers unparalleled space, comfort, and stunning surroundings—all just 73 kilometers from Hobart. Make this your ultimate coastal getaway!

Step inside to discover a thoughtfully designed home featuring four spacious bedrooms, two well-appointed bathrooms, including an ensuite, and two inviting lounge areas perfect for both relaxation and entertaining. The heart of the home boasts modern conveniences, including a dishwasher and built-in appliances, while a walk-in pantry provides ample storage throughout.

Climate control is assured year-round with reverse cycle air conditioning and the cosy warmth of a wood heater fireplace for those crisp coastal evenings. The property's practical features extend to include a dedicated study room, and the teenage retreat/bedroom 4, ensuring every family member has their own special retreat.

Security and connectivity are well catered for with an alarm system, broadband internet availability, and Pay TV access, keeping you connected to the world while enjoying your coastal sanctuary. The double garage provides secure parking for two vehicles, while the eco-friendly water tank demonstrates thoughtful environmental consideration.

- ~ Three generous bedrooms with built-in wardrobes
- ~ Large teenage retreat/bedroom four
- ~ Two bathrooms, including an ensuite
- ~ Two comfortable lounge areas
- ~ Study, workshop
- ~ Double garage plus workshop space
- ~ Ocean aspect with stunning coastal views and Maria island view.

4 BED | 2 BATH | 2 CAR

PRICE:

E O | Viewing By Appointment

OPEN FOR INSPECTION:

N/A

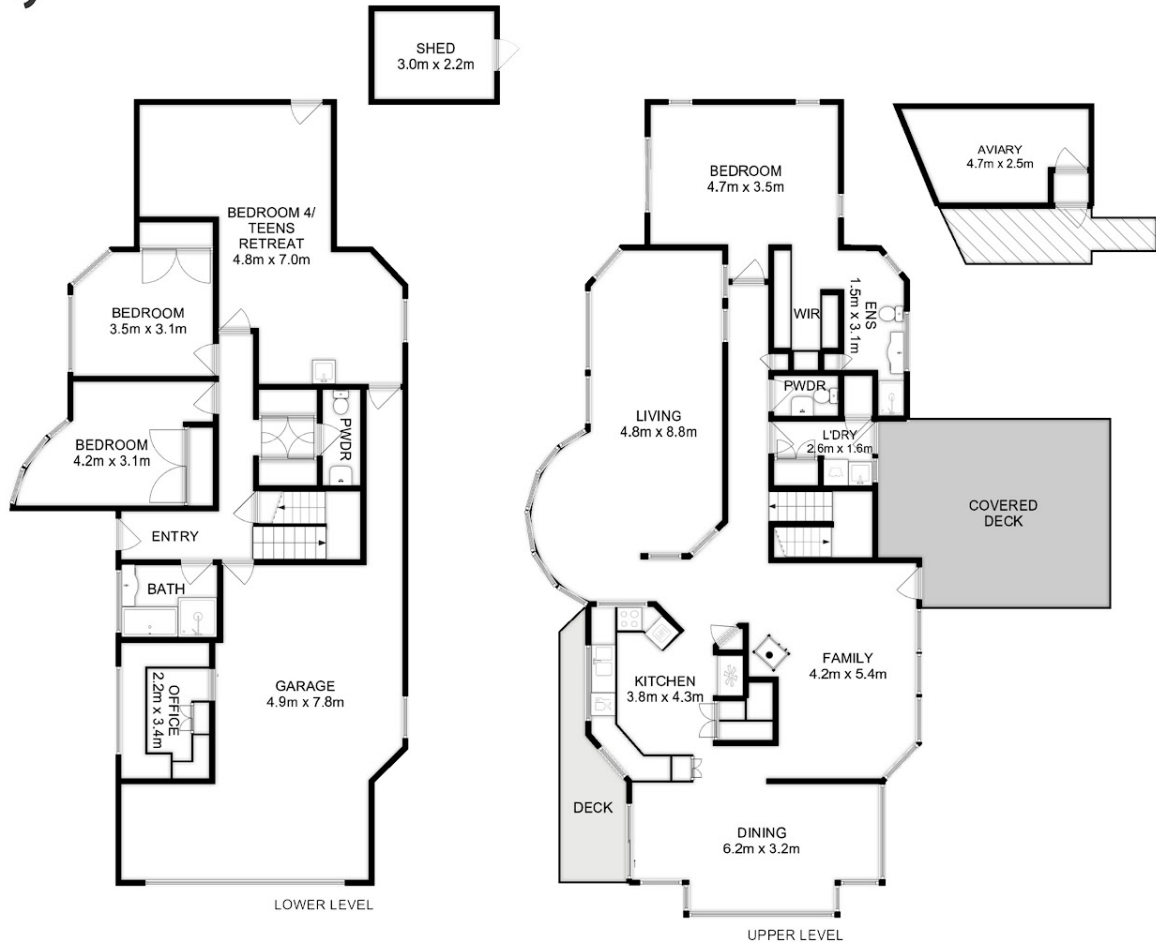


Sommai Coomber

0447194609

sommai.coomber@atrealty.com.au

www.atrealty.com.au



Total Approx. Floor Area : 290 sqm
Total Approx. Outbuilding Area : 19 sqm

All measurements are internal and approximate.
This plan is a sketch for illustration, not valuation.
Produced by Open2view.com

Disclaimer: Please note this floor plan is for marketing purposes and is to be used as a guide only. All dimensions are estimates only and may not be exact measurements.