



SOLD

GRAND 2 BEDROOM + 2 UTILITY ROOMS + 2 BATHROOMS. RV PARK'S FINEST HOME.

This is the most impressive house in the RV Village for position, balance, presentation and with all the goodies.

Some of the main features are:

- + Main entrance via east stairs on a wrap-around veranda leading to an open plan with polished timber floors.
 - + Large modern kitchen, dining, and lounge with expansive views to the north and east through bay windows.
 - + Ducted and zoned air conditioning throughout the home. Ceiling fans and skylights are placed in strategic places around the house.
 - + Large utility room/office carpeted, on the left, through bi-fold doors from the lounge.
 - + The second bedroom is large and very inviting with built-ins, ceiling fan with ducted air-conditioning and next to the main spacious bathroom and a separate toilet.
 - + Large laundry with all the utilities including built in Miele washer and dryer and storage cupboards that lead out to the West side back door and carport.
 - + A foldaway ladder has you entering a fully lined loft with high ceiling, light and power. (Hideaway for storage or naughty grandchildren!)
 - + The jewel in the prize is the very large, open plan bedroom and bathroom with double shower, spa bath, and roman style, hand painted pillars and chandelier. All the wet areas have floor to ceiling marbled tiles. Off to the right is a separate, very large walk-in wardrobe/dressing room for two.
 - + Outside you will find the large fully covered double RV carport (20Mx5M) on the west side, plus a 16 M2 shed/workshop at the rear. The house has wrap-around verandas on three sides with elevated views. There is wheelchair and stair access to the house via a ramp and steps from the carport into the laundry.
 - + This is a dog friendly home with doors and gates/fencing to keep four legged pets safe.
 - + The new large solar system keeps the electric bills at bay.
 - + The eastern veranda has 4 bays with Zip Trak shade cloth and spring loaded, fully retractable blinds. The eastern and rear verandas on the southeast corner have 5 bays of all-weather aluminium plantation shutters and one all-weather clear Zip Trak blind facing over the back yard with private views. The rear deck also has a radiant wall mounted heater for the cooler winter nights, an entertainer's paradise.
- The grounds are made up of shrubs, trees, hedges and grass with a timed 6 zone automatic in

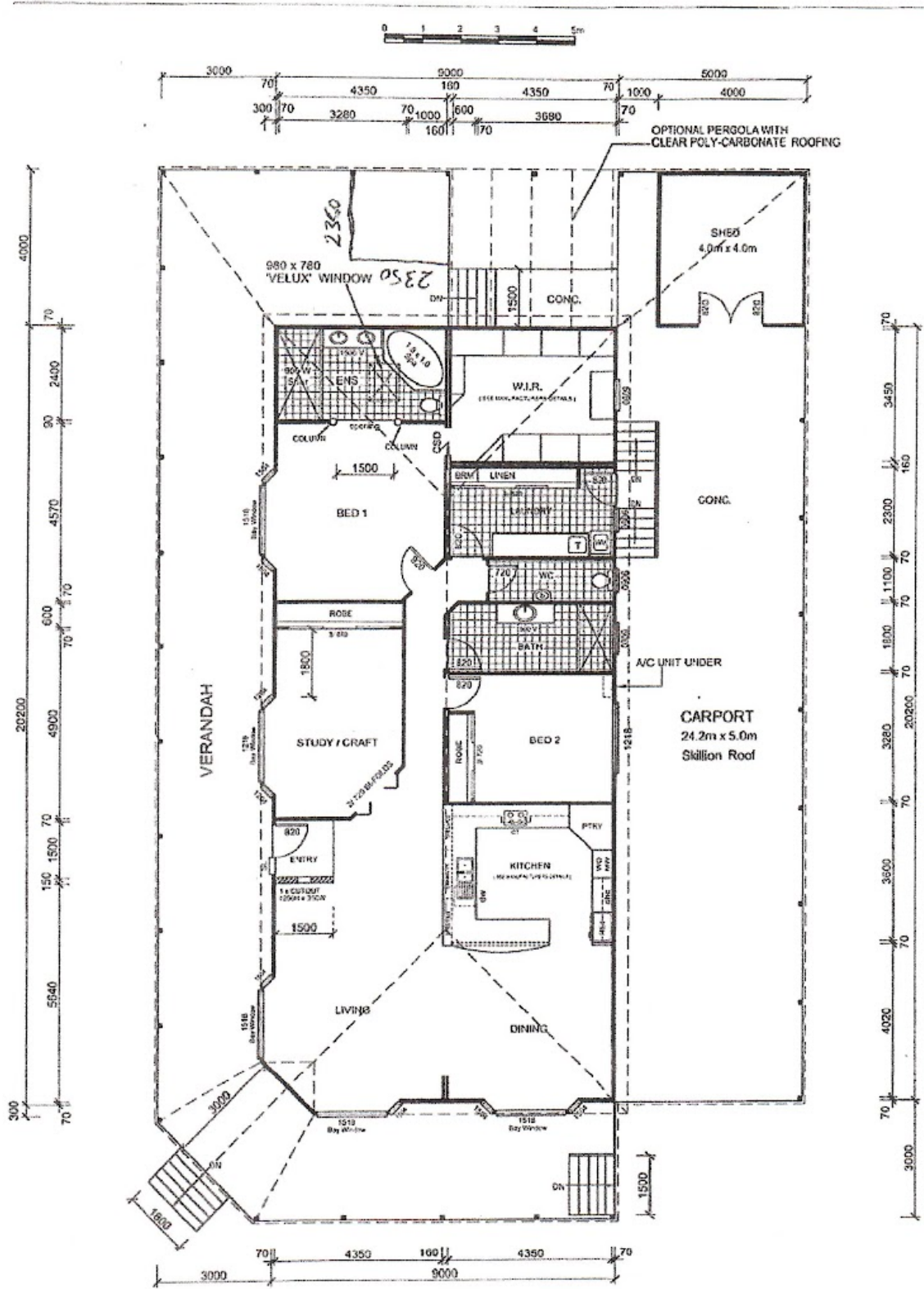
2 BED | 2 BATH | 2 CAR

PRICE:
\$675,000

OPEN FOR INSPECTION:
N/A



Murgha Mack
0414666970
murghamack@atrealty.com.au
www.atrealty.com.au



FLOOR PLAN
SCALE: 1:100 - A3

© Manor Park Homes Head Office and Factory 2 Warringah Close Somersby NSW 2250 Phone 02 4340 8300 Fax 02 4340 2080

DRAWN BY: **BJ** PROJECT **20.2 x 9.0 Special Design for:**

CHECKED BY:



Disclaimer: Please note this floor plan is for marketing purposes and is to be used as a guide only. All dimensions are estimates only and may not be exact measurements.

Murgha Mack
0414666970
murghamack@atrealty.com.au
www.atrealty.com.au



