



**SOLD**

## VIEWS, PRIVACY AND A PERFECT POSITION TO BEACHES, SHOPS AND SCHOOLS - A FAMILY HOME WITH THE LOT!

This roomy family sanctuary offers care-free living across 165+ square metres of thoughtfully designed space, making it an ideal haven for those seeking the perfect blend of comfort, convenience and lifestyle.

Discover spacious interiors featuring four generous bedrooms, including a master suite with ensuite and walk-in wardrobe for seamless storage solutions. The additional lounge area creates a sense of space and practicality for busy family life. Year-round comfort is assured with reverse cycle air conditioning throughout the home working efficiently with the large 6.9kw solar system.

The outdoor lifestyle awaits on your private 847 square metre block, where entertaining becomes effortless.

A sunny and welcoming outdoor entertainment area sets the scene for memorable gatherings with family and friends. The fully fenced property ensures privacy and security, while practical sheds offer additional storage solutions for all your outdoor equipment and seasonal items.

Bellerive's convenient location places you at the heart of one of Tasmania's most sought-after suburbs, where elegance meets Australian charm along the "beautiful shore." This historic community, established in the 1820s, offers an unparalleled lifestyle with direct ferry access to Hobart's CBD, making your daily commute a scenic pleasure rather than a chore.

- Renovated and well-built family home with sunny Derwent River outlook
- Flexible floorplan: 4 bedrooms – Perfect family home
- Spacious light-filled living zones designed to capture the views
- Close to Bellerive Village & Howrah shops, cafés, schools and services
- Established Gardens & private, sunny outdoor entertaining deck
- Just minutes to Bellerive Beach, parks and sporting facilities
- Quick, easy 8 minute commute to Hobart CBD
- large 847m2 allotment with 165m2+ Home
- Single garage with secure parking + sheds

Whether you're looking to upsize, secure a forever home, or invest in one of Hobart's blue-chip

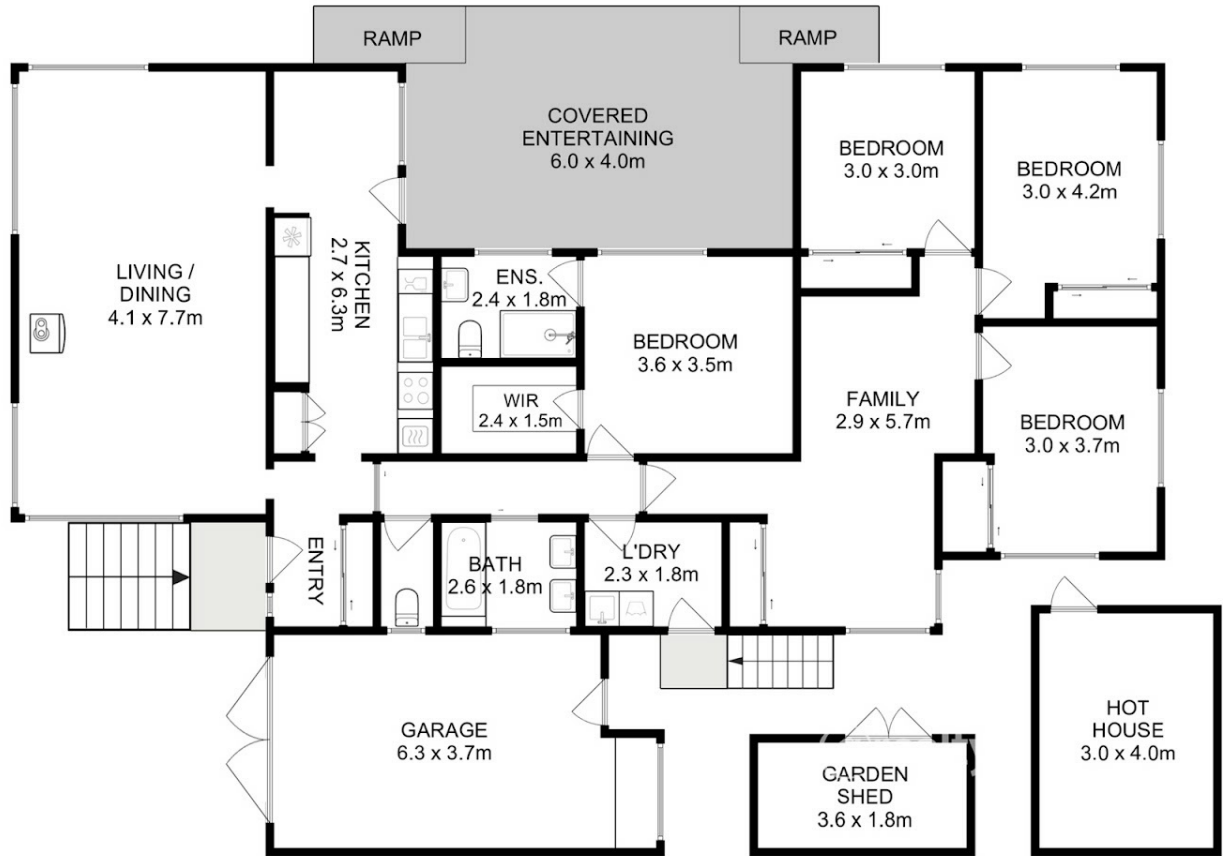
**4 BED | 2 BATH | 5 CAR**

**PRICE:**  
\$920,000

**OPEN FOR INSPECTION:**  
N/A



**Ben Palmer**  
**0417556731**  
benpalmer@atrealty.com.au  
[hobarthomes.com.au](http://hobarthomes.com.au)



Total Approx. Floor Area : 162 sqm  
Total Approx. Outbuilding Area : 42 sqm  
Total Approx. Usable Area : 204 sqm

All measurements are internal and approximate.  
This plan is a sketch for illustration, not valuation.  
Produced by Open2view.com

Disclaimer: Please note this floor plan is for marketing purposes and is to be used as a guide only. All dimensions are estimates only and may not be exact measurements.