



SOLD

PARKSIDE SERENITY MEETS MODERN SIMPLICITY

Perfectly positioned beside leafy parklands, this stylish two-storey home offers a relaxed and contemporary lifestyle in one of Craigieburn's most convenient settings. Designed for easy living, it's ideal for first-home buyers, downsizers, or investors looking for low-maintenance appeal without compromise.

The welcoming front porch opens into a bright, open-plan living and dining area with large windows and easy-care tiled flooring. The sleek gallery-style kitchen features stone benchtops, gas cooking, stainless steel appliances, and a dishwasher, creating a practical and attractive heart of the home. From here, sliding doors flow to a private courtyard — a perfect space for entertaining, morning coffee, or quiet evenings outdoors.

A handy powder room and European laundry complete the downstairs layout, while upstairs you'll find two generous bedrooms, both with built-in robes and soft carpeting for comfort. The main bedroom enjoys tranquil parkland views, while the main bathroom is central to both bedrooms. There's also a linen cupboard for added storage, and a single carport with internal access for convenience.

Comfort is assured year-round with split system air conditioning, complemented by natural light and cross-flow ventilation.

Property highlights:

- Two spacious bedrooms, both with built-in robes
- Main bathroom upstairs plus powder room downstairs
- Open-plan living and dining area with tiled floors
- Gallery kitchen with gas cooking, stone benches, and dishwasher
- Private courtyard with direct access to the carport
- Euro-style laundry and linen cupboard
- Split system air conditioning
- Single carport with internal access
- Low-maintenance design throughout

Set along a peaceful park-side path, this home enjoys an enviable position right beside

2 BED | 1 BATH | 1 CAR

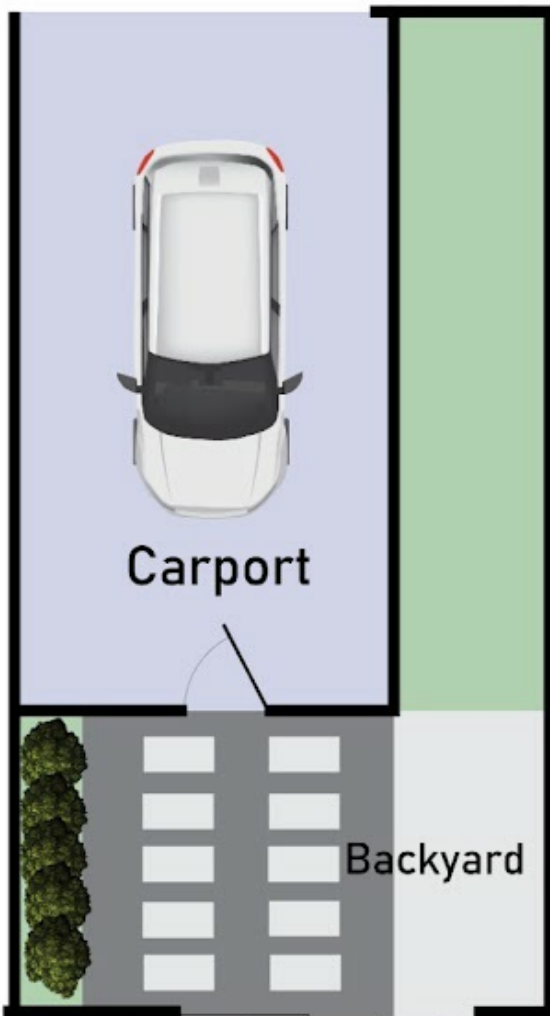
PRICE:
\$441,000

OPEN FOR INSPECTION:
N/A

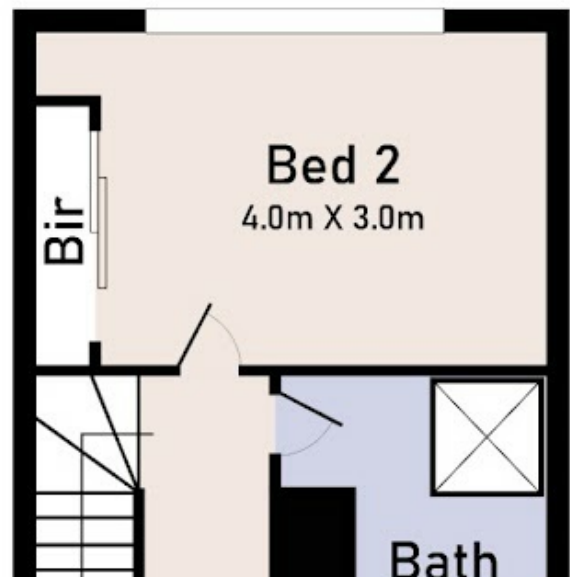
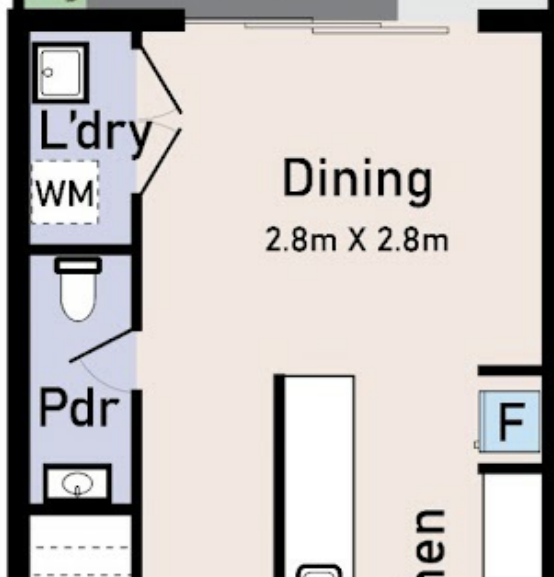


Jag Duggal
0493689449
jag.duggal@atrealty.com.au
www.atrealty.com.au

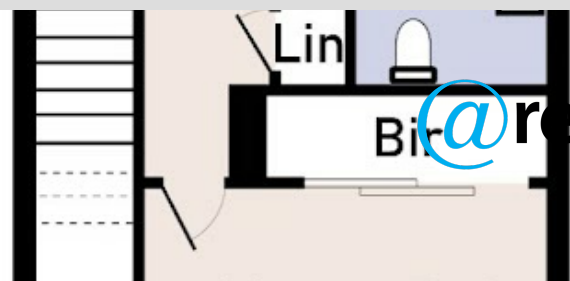
Ground Floor



First Floor

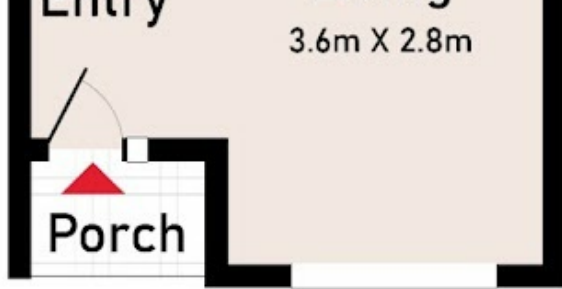


Disclaimer: Please note this floor plan is for marketing purposes and is to be used as a guide only. All dimensions are estimates only and may not be exact measurements.



Jag Duggal
049368944
jag.duggal@arealty.com.au
www.arealty.com.au





15 Clendon Way, Craigieburn

* Dimensions are approximate and for illustrative purposes only

