



FOR SALE

THE PERFECT FAMILY STARTER

Presenting an exceptional opportunity to secure a quintessential three-bedroom brick bungalow in a highly convenient locale. Bathed in natural light and enjoying an enviable all-day sun aspect, this wonderful family haven is ready to welcome its new owners. The residence has been freshly updated throughout with a crisp, neutral palette and new carpet, offering a contemporary canvas ready for immediate enjoyment. The interior boasts a highly functional and workable layout, centred around a generous, light-filled open-plan hub. The well-appointed kitchen now features new appliances and flows seamlessly out to a fabulous entertaining deck—ideal for effortless summertime BBQs and social gatherings. Accommodation is well-proportioned, featuring two comfortable double bedrooms and a third generous single bedroom, all supported by a spacious and thoughtfully modernised family bathroom. Essential comforts are covered with dual heating options, including a cosy wood burner and a heat pump, ensuring year-round climate control. Practicalities are well catered for with a covered carport providing everyday parking, complemented by a secure under-house garage, perfect for storing motorbikes, tools, or additional seasonal items. The generous rear section offers a superb, safe space for children and pets, easily accessed directly from the main deck. Located moments from excellent schools, local shops, the medical centre, and reliable transport links, the position is truly outstanding. This property delivers on lifestyle and convenience, making it a perfect fit for a growing family or a savvy addition to any investment portfolio.

3 BED | 1 BATH | 1 CAR

PRICE:

Price by Negotiation

OPEN FOR INSPECTION:

N/A

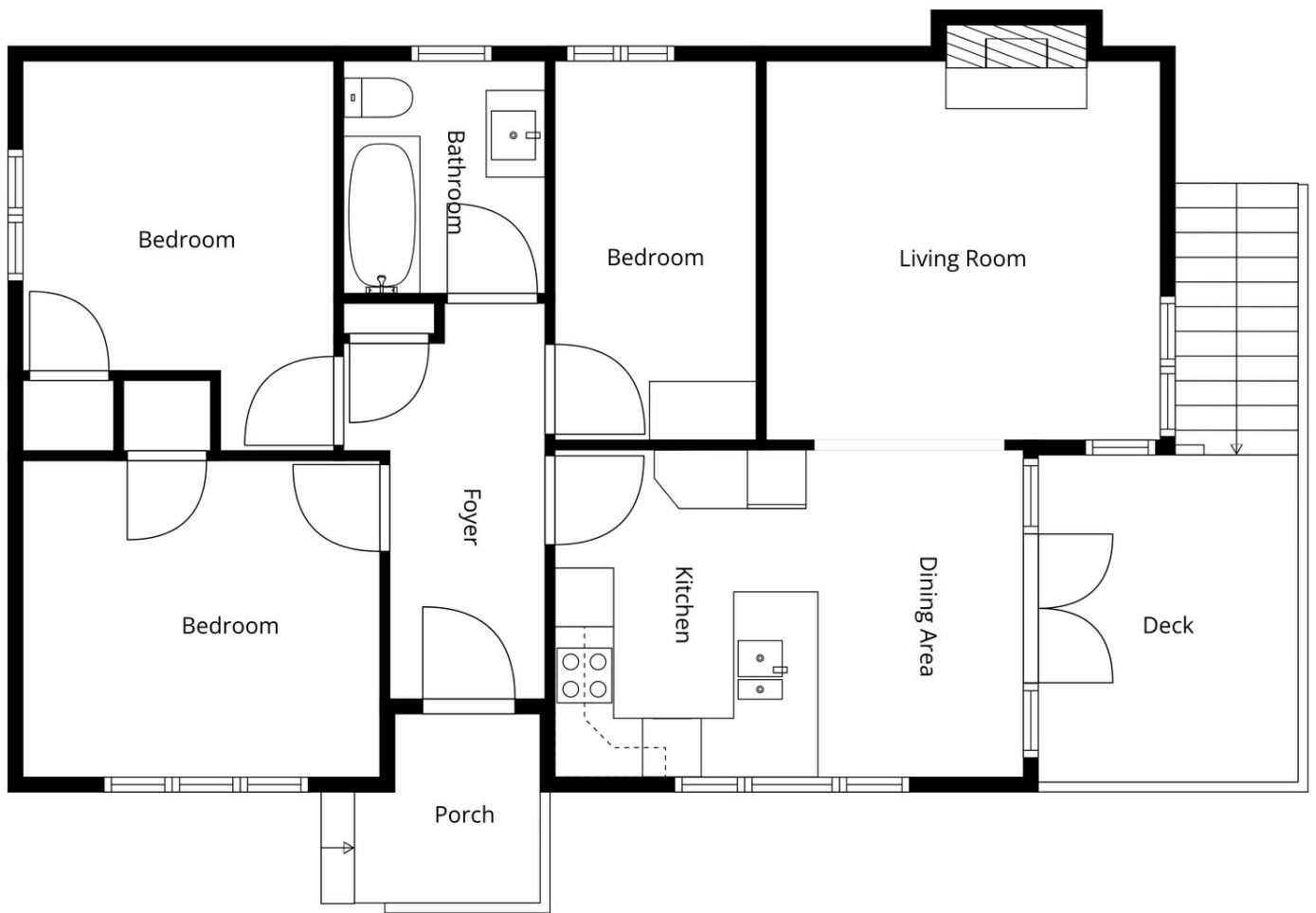


Tania Porteous

021476011

tania@thecollectiverealty.co.nz

www.thecollectiverealty.co.nz



Sizes And Dimensions Are Approximate, Actual May Vary

Disclaimer: Please note this floor plan is for marketing purposes and is to be used as a guide only. All dimensions are estimates only and may not be exact measurements.