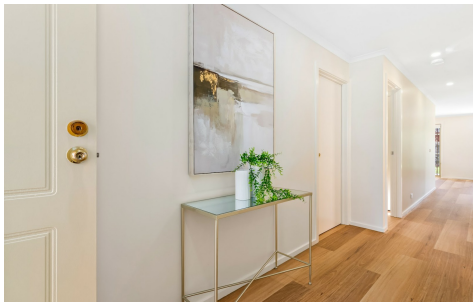


8 SAINT RAFAEL PLACE WHITTLESEA



SOLD

UNDER OFFER

2  | 1  | 2 

This great value 2-bedroom home is worth a look, perfectly positioned and designed, offering an easy-care low-maintenance lifestyle with Whittlesea's key amenities close by. Freshly painted, new carpets and hybrid timber flooring are just the beginning for this beautifully presented property, this is an outstanding opportunity for astute home buyers, Offering two well-proportioned bedrooms, the main features a built-in robe and split system air-condition, while the second bedroom has built-in robes and are serviced by a central bathroom complete with a full-size bath. The feature packed and well appointed kitchen features a Westinghouse electric oven and Induction cooktop. The dining and family living area which is complete with split-system air conditioning, new timber Hybrid flooring, and sliding doors to the backyard, perfect for family gatherings, A large laundry, modern downlights, roller blinds, fresh paint, carpet and hybrid flooring throughout, and a single garage with internal access plus side access to the rear yard. A solar panel system with Tesla battery will keep your powers needs to a minimum.

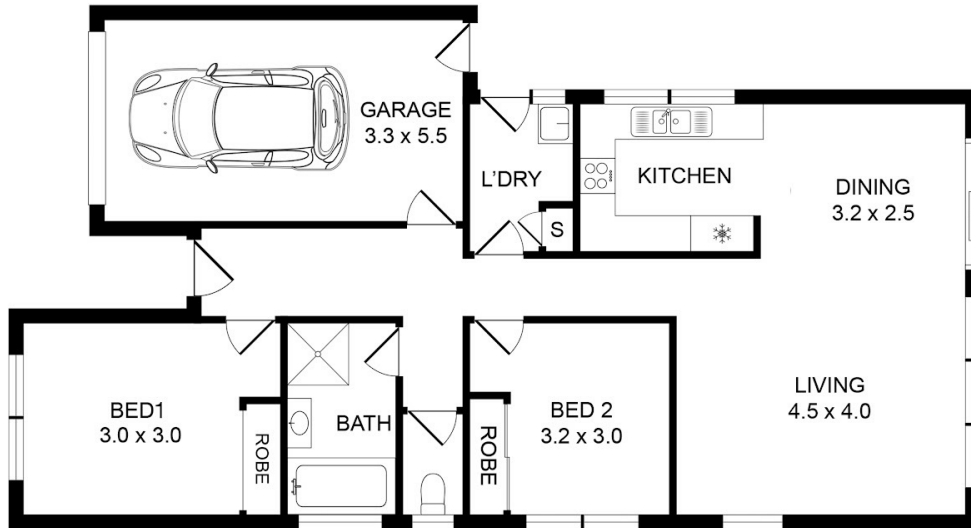
This home delivers comfort, form and function,

PRICE: \$600,500

OPEN FOR INSPECTION: N/A .

Wayne Hutchinson | 0424370940 | wayne@waynehutchinson.com.au | waynehutchinson.com.au

8 SAINT RAFAEL PLACE,
WHITTLESEA



 Disclaimer: Floor plan is represented as guide only.

Disclaimer: Whilst every effort has been made to ensure the accuracy of these particulars, no warranty is given by the vendor or the agent as to their accuracy. Interested parties should not rely on these particulars as representations of fact but must instead satisfy themselves by inspection or otherwise.
(Rev AU#1)

Wayne Hutchinson | 0424370940 | wayne@waynehutchinson.com.au | waynehutchinson.com.au