



SOLD

SPACIOUS, STYLISH & PERFECTLY POSITIONED!

This beautifully presented home offers a flexible and functional layout, ideal for modern living. Featuring three generous bedrooms—all with built-in robes—the master suite stands out with a spacious walk-in robe and private ensuite. A versatile study or formal dining room adds even more living options.

The sleek, modern kitchen is equipped with stainless steel appliances (including a dishwasher) and designer tiled finishes, seamlessly connecting to the expansive open-plan meals and living area—perfect for everyday living and entertaining.

Comfort is ensured year-round with ducted heating throughout and a split-system air conditioner in the main living zone. Step outside to a private, low-maintenance backyard with landscaped gardens and an alfresco area ideal for relaxing or entertaining guests. A double remote lock-up garage adds further convenience.

Positioned directly opposite a children's playground and within easy reach of local schools and shops, this home delivers lifestyle, comfort, and location in one unbeatable package. Don't miss your chance to inspect!

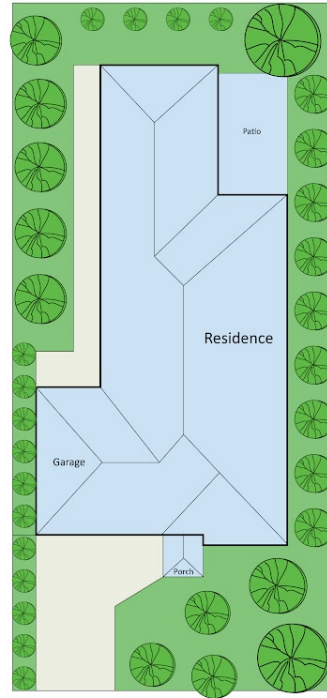
3 BED | 2 BATH | 2 CAR

PRICE:
\$750,000

OPEN FOR INSPECTION:
N/A



Joseph Hanna
0423966320
joseph@atrealty.com.au
www.atrealty.com.au



15 Reiffel Avenue, Sunbury

Dimensions are approximate and for illustrative purposes only



Disclaimer: Please note this floor plan is for marketing purposes and is to be used as a guide only. All dimensions are estimates only and may not be exact measurements.