

SOLD

LAND ONLY SALE ! READY TO BUILD!!

UNDER OFFER IN 3 days!
MORE PROPERTIES NEEDED!

APPROVED BY COUNCIL
READY TO BUILD NOW!
Presenting offers now!
Don't miss out again!
RSVP/SMS your interest now!

Thank you for viewing another quality listing from Team Chenney@realty.

Are you a first home buyer? looking to upgrade? or looking for investment?

Ready to build! Land only sale from MID \$300K's +
(House and land package available. ASK!)

Build your beautifully finished 4-bedroom, 2-bathroom home blends modern design, comfort, and functionality. This 215 sqm block, it's ideal for families, first-home buyers, or investors seeking a stylish, low-maintenance property in a convenient location.

Strategically located easy access to Tokin highway, local shopping centre, service station, supermarket, restaurants, cafe, schools and parks. Burbrige, Koondoola primary school, Girrawheen senior high school, Ashdale college, Marangaroo and the Hawaiian New Park shopping centre and shops all near by.

Avoid disappointment and give Team Chenney a call/SMS/email now!

- Why you will love this home?
- Land bank or.....
 - Build a 4 bed x 2 bath x double garage home. (or 4 bedrooms home?)
 - NO STRATA LEVIES!!

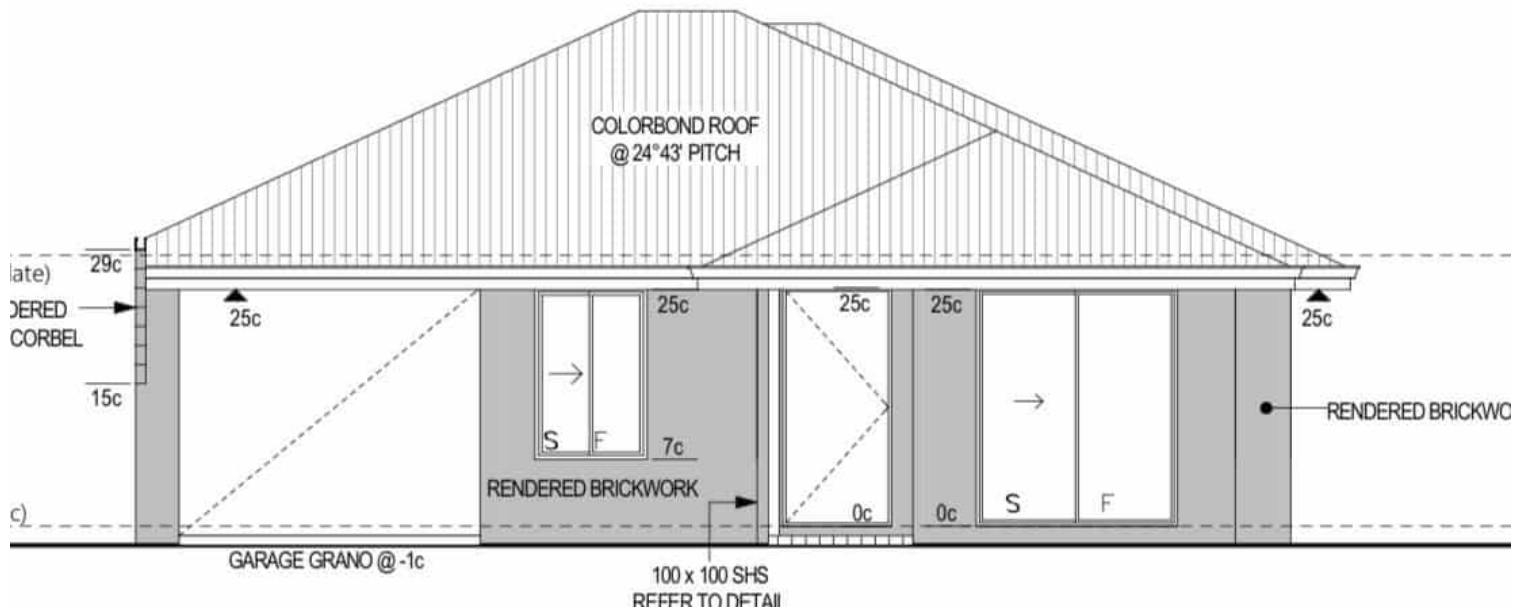
4 BED | 2 BATH | 2 CAR

PRICE:
\$355,000

OPEN FOR INSPECTION:
N/A



John Chenney
0421030398
jchenney@atrealty.com.au
www.atrealty.com.au



Disclaimer: Please note this floor plan is for marketing purposes and is to be used as a guide only. All dimensions are estimates only and may not be exact measurements.