

**SOLD**

## PRIME LOCATION – WALK TO SCHOOL AND TRAIN STATION FOR ULTIMATE CONVENIENCE!

Manor Lakes is one of Wyndham's most sought-after suburbs, offering an ideal mix of lifestyle, location, and growth potential. Residents enjoy access to quality schools, modern shopping facilities, and the Wyndham Vale Train Station, making it an excellent choice for families and investors alike.

Perfectly positioned in the heart of Manor Lakes, this immaculately presented home offers the ideal blend of comfort, space, and convenience - just moments from local schools and Wyndham Vale Train Station.

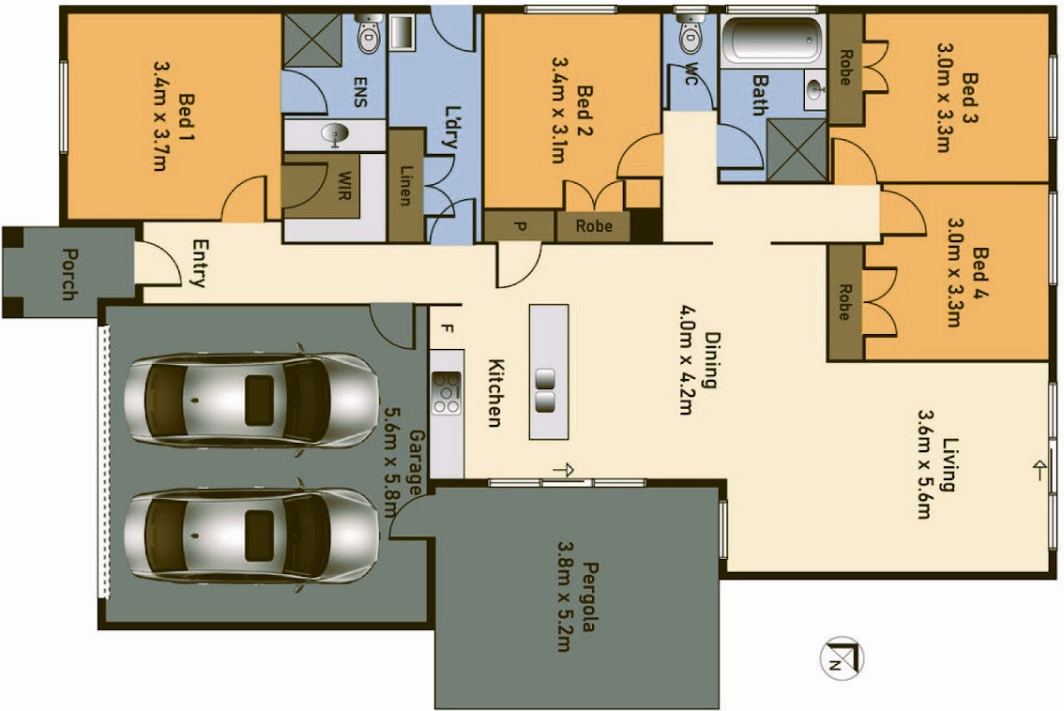
**4 BED | 2 BATH | 2 CAR**

**PRICE:**  
\$620,000

**OPEN FOR INSPECTION:**  
N/A



**Khushbu Hada**  
**0478248008**  
khushbu@atrealty.com.au  
[www.atrealty.com.au](http://www.atrealty.com.au)



Khushbu Hada | 0478 248 008 | [khushbu@atrealty.com.au](mailto:khushbu@atrealty.com.au) | [atrealty.com.au/khushbuhada](http://atrealty.com.au/khushbuhada)

Disclaimer: Whilst every effort has been made to ensure the accuracy of these particulars, no warranty is given by the vendor or the agent as to their accuracy. Interested parties should not rely on these particulars as representations of fact but must instead satisfy themselves by inspection or otherwise.

Disclaimer: Please note this floor plan is for marketing purposes and is to be used as a guide only. All dimensions are estimates only and may not be exact measurements.