



SOLD

SOLID HOME, CENTRAL LOCATION, FUTURE POTENTIAL

Set in a highly sought-after pocket of central Hoppers Crossing, this solid brick veneer home presents a fantastic opportunity for first-home buyers, families, or investors seeking space, comfort, and future potential.

Step inside to discover a bright and welcoming interior with a spacious living area and an inviting meals space adjoining the original timber-look kitchen, which offers plenty of room to modernise and add your own style.

The home also includes a large enclosed sunroom or rumpus room, providing an excellent all-weather second living or entertaining space that enhances the home's flexibility.

Additional features include a secure lock-up garage and a long driveway offering ample off-street parking.

Perfectly positioned for everyday convenience, this home is within walking distance to Woodville Primary School, Warringa Park School, Hoppers Crossing Railway Station, and Woodville Park Shopping Centre. Families will appreciate the close proximity to Pacific Werribee, local childcare centres and kindergartens, Werribee Mercy Hospital, and Aquapulse, making this an incredibly family-friendly location.

Offering comfort, space, and a location that's second to none, this well-maintained home is ready to move into or enhance further to maximise its full potential. Don't miss this fantastic opportunity to secure a quality property in a prime Hoppers Crossing location.

3 BED | 1 BATH | 1 CAR

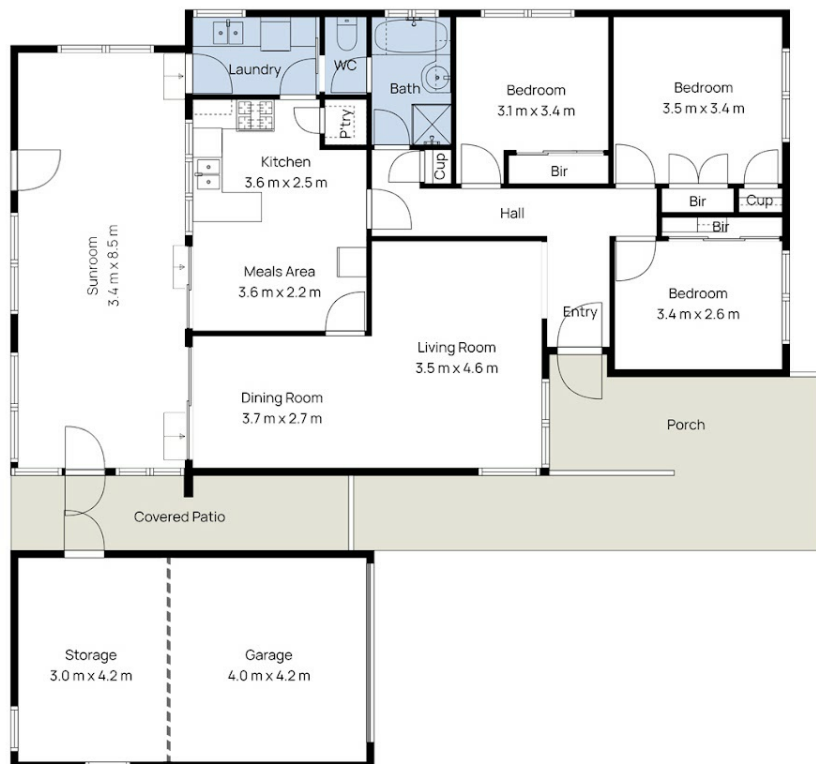
PRICE:
\$642,000

OPEN FOR INSPECTION:
N/A



Samuel Hogan
0401315234
samuel@atrealty.com.au
www.atrealty.com.au

61 Woodville Park Dr, Hoppers Crossing



@realty

Whilst every attempt has been made to ensure the accuracy of the floor plan contained here, measurements of doors, windows, rooms and any other items are approximate and no responsibility is taken for any error, omission, or mis-statement. This plan is for illustrative purposes only and should be used as such by any prospective purchaser. The services, systems and appliances shown have not been tested and no guarantee as to their operability or efficiency can be given.

Disclaimer: Please note this floor plan is for marketing purposes and is to be used as a guide only. All dimensions are estimates only and may not be exact measurements.