



SOLD

STUNNING ESPLANADE APARTMENT WITH BEACH VIEWS

****Now \$690,000 — Significant Price Reduction****

This stunning beachfront apartment at Tingeera Beachfront Apartments, 306/239 Esplanade, has just been reduced from \$720,000 to \$690,000, offering exceptional value in one of Hervey Bay's most sought-after coastal locations.

The new price reflects renovation and update works required, giving buyers the opportunity to secure a premium beachfront address well below market value. The reduced price is still negotiable for serious buyers.

Offering 2 spacious bedrooms, 2 bathrooms including an ensuite, secure parking and an 81m² floorplan, this residence delivers a perfect blend of comfort, convenience and breathtaking ocean views.

Step inside to discover thoughtful design features including built-in wardrobes, air conditioning for year-round comfort, and an enviable beachfront position that puts you just steps from Hervey Bay's pristine beaches. The secure building provides peace of mind with intercom access, gated grounds and a well-maintained complex.

Your private balcony captures uninterrupted sunrises over the bay, while resort-style amenities ensure every day feels like a holiday:

Key Tingeera Features

- In-ground swimming pool with spa
- Entertainment area ideal for gatherings
- Fully equipped on-site gym
- Secure parking for convenience

Located in the heart of Pialba's bustling CBD, you'll enjoy unmatched access to:

- Local churches and community hubs
- Shopping centres, cafes and medical facilities
- Public transport and beachfront walking paths

2 BED | 2 BATH | 1 CAR

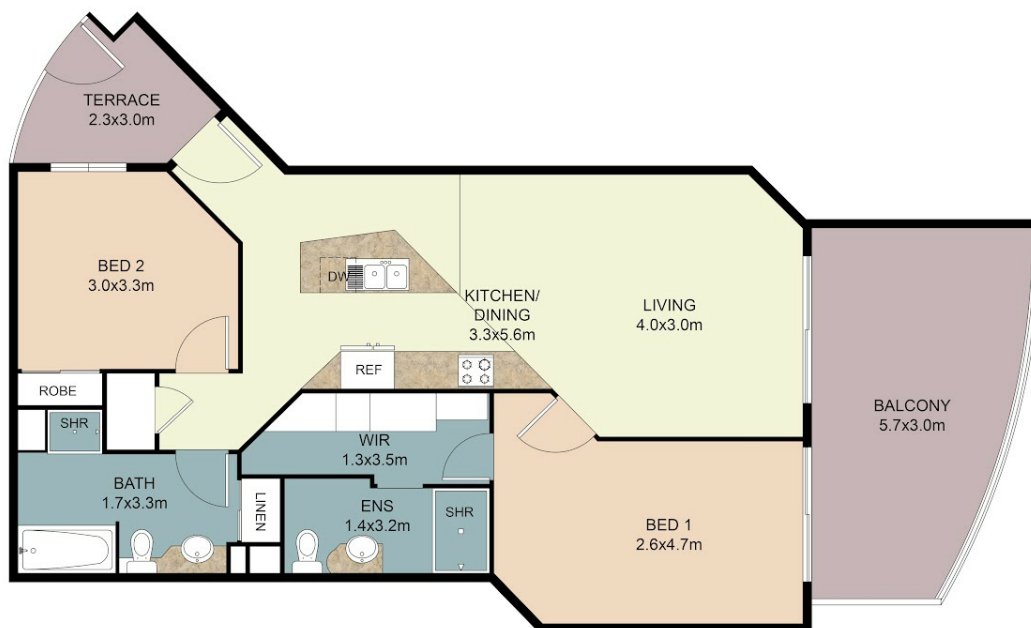
PRICE:
\$665,000

OPEN FOR INSPECTION:
N/A



Calvin Marais
0421517941

calvin.marais@atrealty.com.au
www.atrealty.com.au



FLOOR PLAN

This floor plan including furniture, fixture measurements and dimensions are approximate and for illustrative purposes only. BoxBrownie.com gives no guarantee, warranty or representation as to the accuracy and layout. All enquiries must be directed to the agent, vendor or party representing this floor plan.

Unit 306, Tingeera Beachfront Apartments

Disclaimer: Please note this floor plan is for marketing purposes and is to be used as a guide only. All dimensions are estimates only and may not be exact measurements.