



**SOLD**

## POTENTIAL PLUS! IDEAL FLIP, INVESTMENT OR FIRST HOME

Calling all savvy investors, first home buyers and renovation/flip enthusiasts! Positioned in one of San Remo's most sought-after pockets, this expansive 6-bedroom home is overflowing with potential and ready for someone to add serious value.

Set on a generous 595m<sup>2</sup> level corner block, this property is ideal for future granny flat development (STCA). While in need of some TLC, the layout and location provide the perfect foundation to transform, renovate or capitalise for strong returns.

### Location Highlights:

- Premium top-end San Remo location
- Short stroll to local schools, shops, medical facilities and the waterfront
- Minutes to the M1 motorway and stunning Central Coast beaches

### Property Features:

- Large 6-bedroom home with endless scope to improve
- Perfect for investors, first home buyers or property flippers
- 595m<sup>2</sup> corner block – ideal granny flat site (STCA)
- Add value with renovations and reap the rewards

Homes with this kind of potential don't last long.

Contact Brad Barker on 0413 875 833 to arrange your inspection or for more information today!

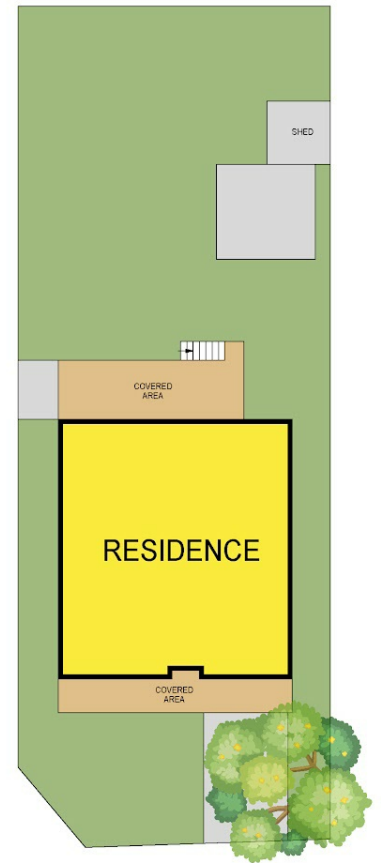
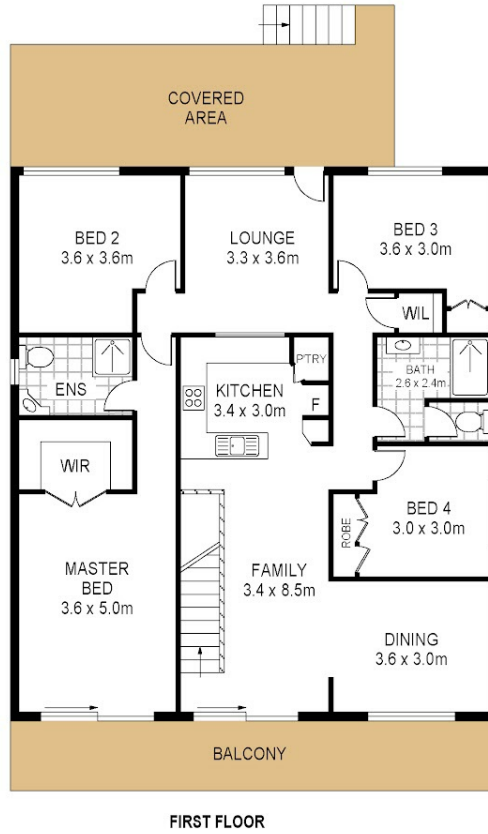
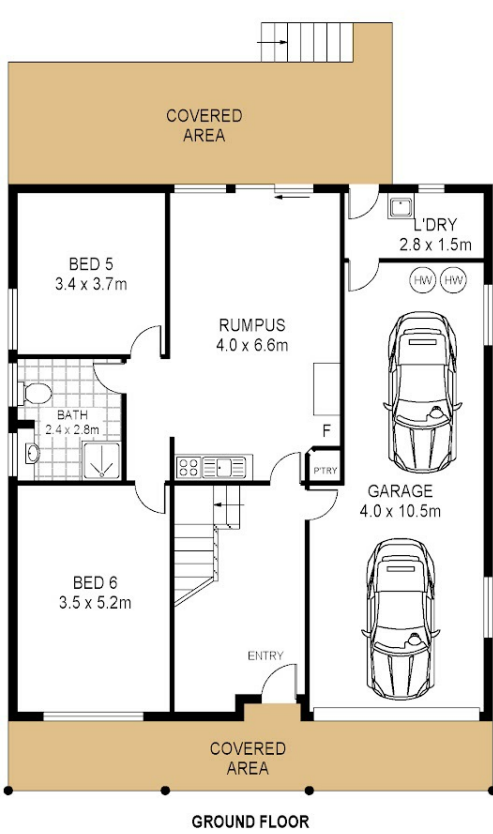
**6 BED | 3 BATH | 2 CAR**

**PRICE:**  
**\$807,000**

**OPEN FOR INSPECTION:**  
**N/A**



**Brad Barker**  
**0413875833**  
bradbarker@atrealty.com.au  
[www.atrealty.com.au](http://www.atrealty.com.au)



21 Eyre Crescent  
San Remo

Total Internal Floor Area: 274 sqm

Scale in metres. Indicative only. Dimensions are approximate. All information contained herein is gathered from sources we believe to be reliable. However we cannot guarantee its accuracy and interested persons should rely on their own enquiries



Disclaimer: Please note this floor plan is for marketing purposes and is to be used as a guide only. All dimensions are estimates only and may not be exact measurements.

Brad Barker  
0413875833  
bradbarker@atrealty.com.au  
[www.atrealty.com.au](http://www.atrealty.com.au)

