



FOR SALE

COUNTRYSIDE 37,200SQM! - 5MIN TO CITY LIFE AND NEW SUBURB INFRASTRUCTURE

This stunning traditional manor, crafted from solid sandstone with parquet flooring throughout, boasts breathtaking views of the city skyline and surrounding countryside. Despite its serene and private setting, it's just a 5-minute drive to local schools, shopping centers, Griffith University Hospital, the M1, vibrant city life, and the Broadwater Parklands. Offering unmatched tranquility, it feels as though you're in the heart of the countryside, with no neighbors in sight.

The main residence, ready for an upgrade or renovation, offers a solid foundation for owners seeking to create something truly special. With immense potential to add further value, this property spans an impressive 37,200m² of prime land, encompassing the main residence and two additional uncleared vacant blocks. Don't miss this rare opportunity to own a hidden gem that perfectly blends privacy, functionality, and breathtaking views.

On the main level, the kitchen and sprawling living areas are encased by glass louvered and large windows which showcase the amazing views of the Gold Coast. Enjoy the luxury of sitting watching the fantastic city seascape and sparkling lights at night whilst sitting in front of your log burning sandstone fluted fireplace. The huge master suite offers dressing room and en-suite. Main bathroom also accommodates fifth bedroom. A huge laundry provides plentiful storage, well planned design leads you out to a private drying courtyard which is surrounded by lush manicured gardens. Cleverly designed to open its doors to multiple options.

As a family home the design ensures everyone has space and privacy. Come to inspect today as you will be very surprised to find how much this hidden gem amongst city life has to offer.

- * 37,200m² prime position land with stunning skyline views
- * Lot 1 (House block) - sprawling over 7616m²
- * Lot 2 (Elevated vacant uncleared block) - 1307m² stunning views
- * Lot 3 (Entry vacant uncleared block) - 2847m²
- * Potential of 2 residential lots to develop or re sell
- * 5 bedrooms, 4 bathrooms + media room/games room and study
- * Gourmet kitchen, parquet flooring, ducted air conditioning throughout
- * 2 separate living areas with 2 lounge areas, media room/kids retreat
- * Large swimming pool and outdoor alfresco poolside areas

5 BED | 4 BATH | 4 CAR

PRICE:
\$4,995,000 Negotiable

OPEN FOR INSPECTION:
N/A



Trina Henry
0415123323
trina@premierestateagentsgc.com
www.premierestateagentsgc.com

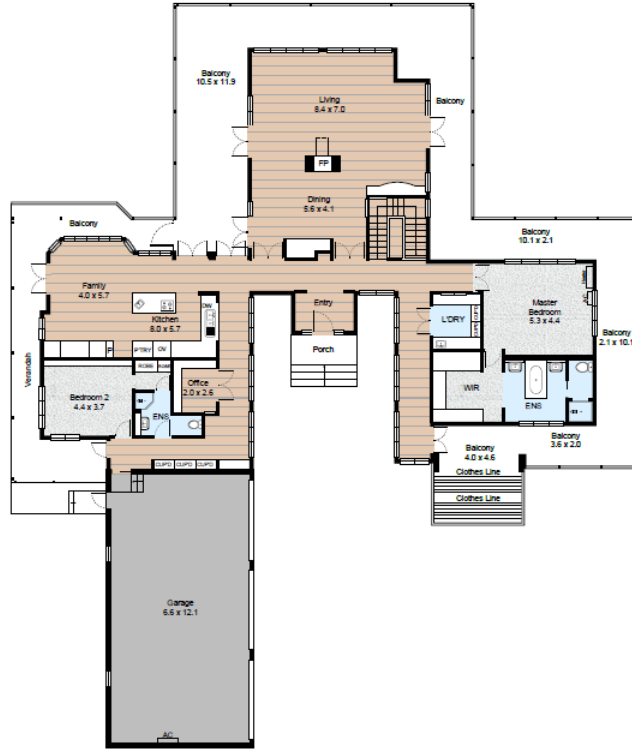
26B Uplands Drive, Parkwood



 5 Bed
  4 Bath
  7 Car

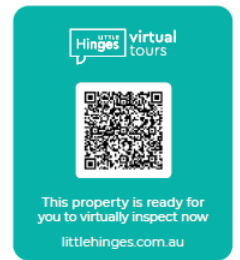


LOWER GROUND FLOOR



GROUND FLOOR

Internal : 514m²
 External : 231m²



All information contained herein is gathered by Little Hinges. Whilst the scanning technology is highly reliable, we cannot guarantee its accuracy and interested parties should rely on their own enquiries.

Disclaimer: Please note this floor plan is for marketing purposes and is to be used as a guide only. All dimensions are estimates only and may not be exact measurements.

Trina Henry
0415123323
 trina@premierestateagentsgc.com
 www.premierestateagentsgc.com

