

214/14-20 NICHOLSON STREET  
COBURG



# FOR SALE

**MODERN COBURG APARTMENT: 2 BEDROOM - 2 BATHROOM - GREAT BALCONY**

2  | 2  | 1 

Step into cosmopolitan living in this impeccably appointed 2-bedroom, 2-bathroom apartment at 214/14-20 Nicholson Street, perfectly positioned in the heart of Coburg's thriving cultural precinct. This modern residence offers the ideal blend of contemporary comfort and inner-city convenience, just 8km from Melbourne's CBD.

The thoughtfully designed apartment is freshly painted and has new carpets in the bedrooms. The layout features two spacious bedrooms, providing ample storage and privacy. The main bedroom features ensuite and built in robe. With a large central full bathroom ensuring comfort for residents and guests alike. The apartment boasts premium indoor features including air conditioning for year-round comfort.

A modern kitchen with quality Fisher and Paykel oven and dishwasher, plus the convenience of broadband internet availability and pay TV access for seamless connectivity and entertainment.

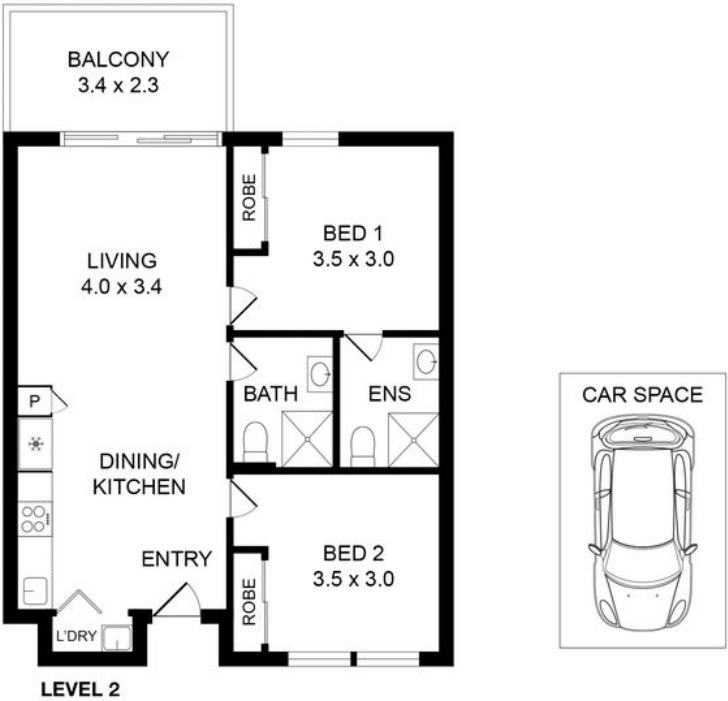
Step outside to your private balcony, perfect for morning coffee or evening relaxation while soaking in the vibrant neighbourhood atmosphere.

**PRICE:** \$430,000 - \$470,000

**OPEN FOR INSPECTION:** Feb 14 at 1:00pm - 1:30pm

Wayne Hutchinson | 0424370940 | [wayne@waynehutchinson.com.au](mailto:wayne@waynehutchinson.com.au) | [waynehutchinson.com.au](http://waynehutchinson.com.au)

214/14-20 NICHOLSON STREET,  
COBURG



 Disclaimer: Floor plan is represented as guide only.

Disclaimer: Whilst every effort has been made to ensure the accuracy of these particulars, no warranty is given by the vendor or the agent as to their accuracy. Interested parties should not rely on these particulars as representations of fact but must instead satisfy themselves by inspection or otherwise.  
(Rev AU#1)

Wayne Hutchinson | 0424370940 | [wayne@waynehutchinson.com.au](mailto:wayne@waynehutchinson.com.au) | [waynehutchinson.com.au](http://waynehutchinson.com.au)