



FOR SALE

ROOM FOR THE BOAT, CARAVAN & THE WHOLE FAMILY!

Perfectly positioned in a sought-after pocket of North Boambee Valley, this stylish four-bedroom home combines contemporary comfort, family functionality, and impressive shedding for all your hobbies and toys.

Step inside to discover light-filled open-plan living, featuring a sleek modern kitchen with stainless steel appliances, gas cooktop, and expansive 40mm engineered stone island bench — ideal for casual meals or entertaining friends. Multiple living zones, including a large family area and a spacious lounge/dining room, provide flexibility for the whole family.

The master suite offers a private retreat with walk-in robe and ensuite complete with a luxury bathtub, while three additional bedrooms ensure room to grow.

Outside, the generous patio overlooks a level yard with easy side access leading to a 8x8m shed with 3m-high roller door — the perfect space for a workshop, boat, or caravan. The double garage adds even more secure parking and storage.

Features include:

- 4 bedrooms (Master with ensuite)
- Multiple living areas with high ceilings
- Modern kitchen with quality appliances, gas cooktop, & luxury island bench
- Double garage plus large 8x8m shed (3m high roller door)
- Side access for vehicles, boats or caravans
- Large 800m2 block
- Additional boat/caravan parking at the front of the property
- Family-friendly location, close to schools, shopping & beaches
- Covered outdoor patio for entertaining

4 BED | 2 BATH | 4 CAR

PRICE:

\$1,160,000 - \$1,230,000

OPEN FOR INSPECTION:

Apr 4 at 11:15am - 11:45am

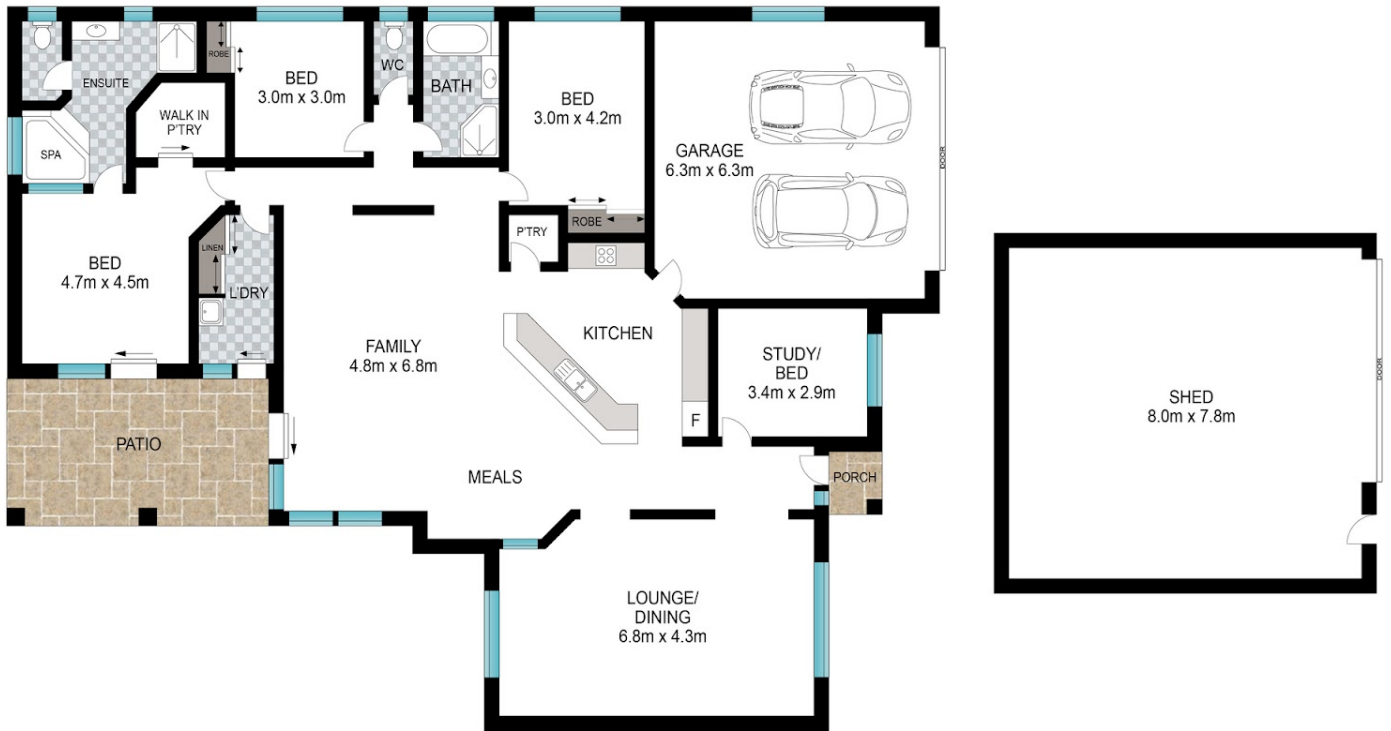


Bryce Heward

0423691322

bryce.heward@atrealty.com.au

www.atrealty.com.au



0 1 2 3 4 5

Scale in metres. Indicative only. Dimensions are approximate. All information contained herein is gathered from sources we believe to be reliable. However, we cannot guarantee its accuracy and interested persons should rely on their own enquiries.

INT: 243 m²
EXT: 20 m²



1 Lophostemon Drive, North Boambee



Disclaimer: Please note this floor plan is for marketing purposes and is to be used as a guide only. All dimensions are estimates only and may not be exact measurements.

Bryce Heward
0423691322
bryce.heward@atrealty.com.au
www.atrealty.com.au

