

7/57 PENINSULAR DRIVE, SURFERS PARADISE, QLD, 4217



SOLD

INVESTOR OPPORTUNITY, PRIME LOCATION!!

Step into the heart of Australia's premier entertainment destination with this ABSOLUTE WATERFRONT 2 Bedroom, 1 Bathroom, Single lock up garage, apartment, with an open plan kitchen dining and lounge flowing directly onto a balcony with relaxing water views. Positioned perfectly at unit 7/57 Peninsular Drive, this property offers an incredible opportunity for savvy investors.

The apartment is currently tenanted with happy long term tenants whose lease runs until 29th of July 2026 with a weekly rental income of \$650 per week. Body Corporate only \$48 per week. We have presented the property as empty for you to give you a clearer picture in the tenants privacy.

This prime location puts you moments away from the stunning Surfers Paradise Beach, consistently ranked as one of Australia's best beaches and recognised internationally by the American Travel Channel. The recently rejuvenated Surfers Paradise Foreshore offers contemporary coastal streetscaping and hosts year-round events including the Australian Sand Sculpting Championships. Whether you're watching the sunrise over the Pacific Ocean or enjoying evening strolls along The Esplanade, beach living doesn't get better than this.

The apartment's position on Peninsular Drive provides excellent connectivity throughout the Gold Coast region. Multiple G:link light rail stations are nearby, offering seamless transport north to Main Beach or south to Broadbeach and beyond. The area is also well-serviced by Kinetic Gold Coast bus routes connecting to western suburbs and major shopping centres.

The investment potential in this PRIME location is exceptional, given Surfers Paradise's status as the Gold Coast's main tourism and entertainment centre.

This apartment represents more than just a rental income— it's an investment opportunity with possible long term development opportunities.

2 BED | 1 BATH | 1 CAR




PRICE:
\$674,000

OPEN FOR INSPECTION:
N/A



Martin O'Reilly
0420768087
martin@oreillysestateagency.com.au
www.oreillysestateagency.com.au

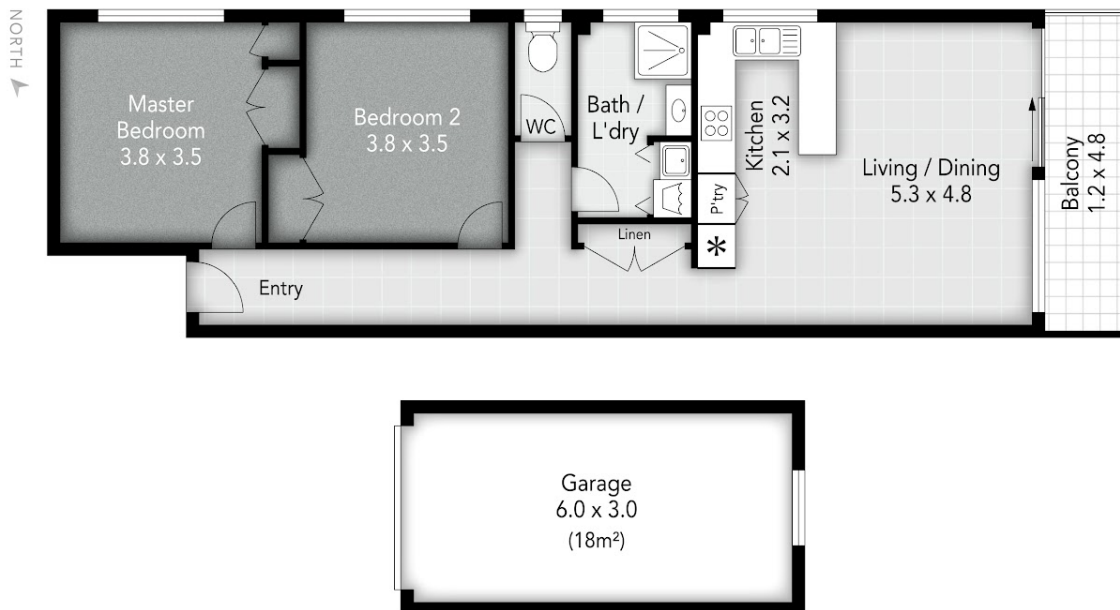
7 / 57 Peninsular Drive
SURFERS PARADISE

-  2 Bed
-  1 Bath
-  1 Car

Internal: 75 m²
External: 6 m²
Total: 81 m²

This is not a legal document. All measurements and images are for illustrative purposes only. Floor plans are intended to give a general indication of the proposed layout only and should only be used as such by any prospective buyer

 imagescollab.



Disclaimer: Please note this floor plan is for marketing purposes and is to be used as a guide only. All dimensions are estimates only and may not be exact measurements.