
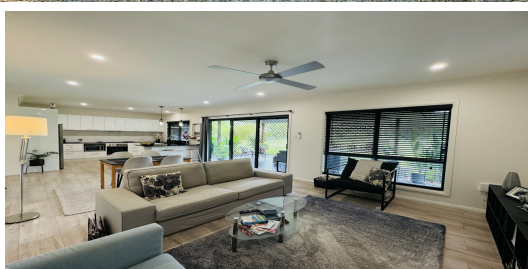


FOR SALE

3  | 2  | 4 

28 WHITES ROAD, HORTON, QLD, 4660



STUNNING NEAR NEW FAMILY HOME ON 1 ACRE

Nestled within 5 minutes of the historic town of Childers, your chance to create new family memories in this 12-month-old family home awaits at Horton QLD. Set out on 4049 sqm, this acre allotment is fully fenced, with established gardens & fruit trees creating the perfect blend of rural tranquillity and modern convenience.

Whether you're looking to establish a family base or simply enjoy the space and freedom that semi country living provides, this Horton property delivers on all fronts, presenting a neat & complete opportunity. The modern home showcases thoughtful design maintaining its peaceful country character while being a convenient access to larger centres.

Main Features include

- 4049 sqm fenced allotment
- Near new 3 Bedroom home 2x bathrooms, 4x car accommodation
- Under covered rear patio with entertainment area
- Spacious kitchen comprises of soft closing cabinetry, dual fridge space, ample of space, dishwasher, electric oven with glass top plate
- 2.6m high ceilings with fans throughout
- Security screens / Hybrid floor planking
- Built in cupboards in all rooms
- Near new home - 12 months old with 3x AC's in total – 2 in bedrooms plus main living
- Timbered framed with insulated walls & ceiling
- Double lock up garage with laundry

PRICE:
\$925,000




OPEN FOR INSPECTION:
N/A

Ty Dan // 0437226831

ty@widebayregionalestate.com.au // www.widebayregionalestate.com.au



FOR SALE

3  | 2  | 4 

28 WHITES ROAD, HORTON, QLD, 4660



FLOOR PLAN

28 Whites Rd, Horton Q 4660

The floor plan included in this marketing material is for illustration purpose only, all measurements are approximate and is the intended artists impression only.

Ty Dan // 0437226831

ty@widebayregionalestate.com.au // www.widebayregionalestate.com.au