

SOLD

THE PERFECT FAMILY PACKAGE – COMFORT, SPACE & POOLSIDE LIVING

Discover the perfect blend of comfort, space, and convenience in this beautifully appointed four-bedroom, two-bathroom home, complete with a single carport, large powered shed, and sparkling saltwater pool — all tucked away in the thriving heart of Morayfield. Designed with family living in mind, this residence puts everyday essentials just a stone's throw from your doorstep.

Step inside and be welcomed by a thoughtful floor plan that balances open, airy living spaces with cosy retreats. The modern, renovated kitchen connects seamlessly to the dining area and main living zone, all flowing effortlessly out to a spacious private patio.

Each of the four bedrooms includes built-in robes (with a walk-in robe for the master) and ceiling fans, while the air-conditioned main living area ensures year-round comfort. At the rear of the home, the master suite features a walk-in robe and sizable ensuite, while a second living room with air conditioning and a built-in bar opens directly to the backyard — ideal for family fun and gatherings.

Set on a generous 863m² block, the property offers low-maintenance landscaping, a 6x7m shed with 3 phase power, side access, and an inviting in-ground saltwater pool. The patio provides the ultimate space for summer BBQs and weekend get-togethers, making this home the complete family package.

Whether you're upsizing, investing, or planting roots, this home delivers a practical lifestyle with endless potential for cherished memories. Don't let this one slip away — make it yours today!

Land Size: 863m²
Approx rental return: \$780-\$800 per week

Home Features

- Modern renovated kitchen with electric cooktop and dishwasher
- Four spacious bedrooms, all with ceiling fans and carpet
- Built-in wardrobes in three bedrooms

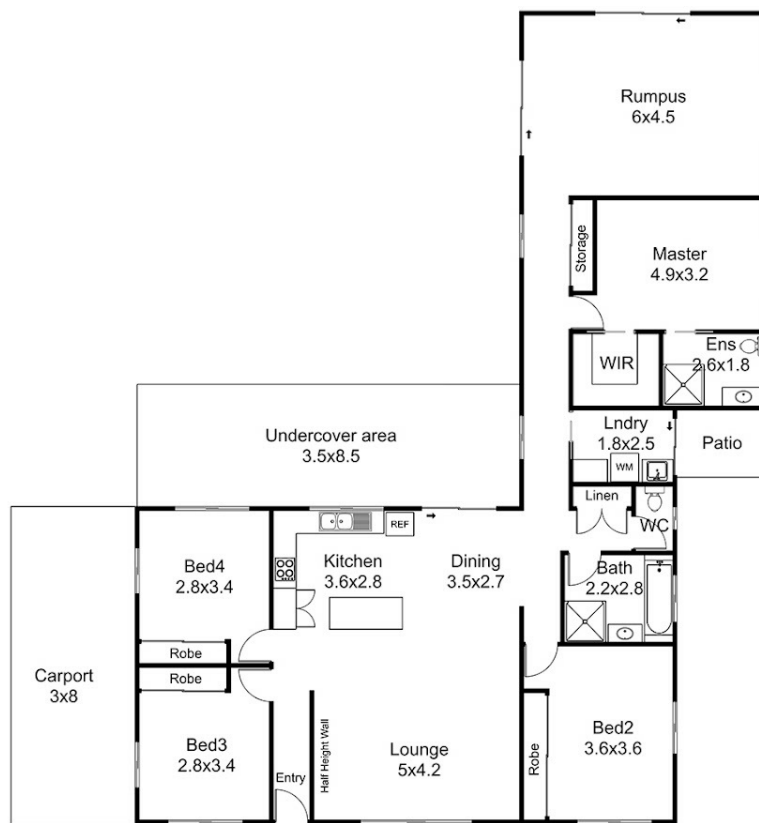
4 BED | 2 BATH | 2 CAR

PRICE:
\$1,000,000

OPEN FOR INSPECTION:
N/A



Jordan Ivins
0407010391
jordan@atrealty.com.au
www.atrealty.com.au



Floor plan, measurements and dimensions are approximate and are for illustrative purposes only.
 Pixmo Productions gives no guarantee, warranty or representation as to the accuracy and completeness of the floor plan.

FLOOR PLAN:
38 CRESTWOOD AVENUE - MORAYFIELD

Disclaimer: Please note this floor plan is for marketing purposes and is to be used as a guide only. All dimensions are estimates only and may not be exact measurements.