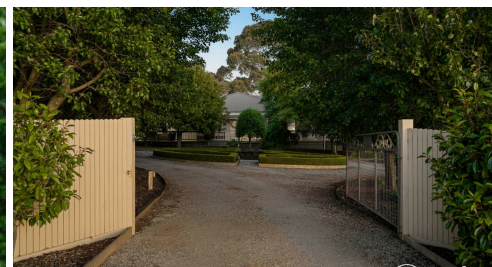


128 HOPETOUN ROAD, DROUIN, VIC, 3818



# FOR SALE

## COUNTRY ELEGANCE MEETS MODERN LIVING – A SHOWPIECE IN THE HEART OF DROUIN

Welcome to 128 Hopetoun Road, where timeless country charm, refined contemporary comfort, and unforgettable lifestyle living come together in one breath taking package. Positioned in one of Drouin's most prestigious and tightly held pockets, this residence is more than a home—it's a statement of quality, serenity, and space.

From the moment you arrive, the property sets a remarkable tone. A beautifully tree-lined driveway guides you toward a grand façade and elegant double-door entry, offering a warm sense of arrival and an instant impression of sophistication. Inside, you'll find a wonderfully curated home where natural light, thoughtful design, and multiple living zones combine to create an environment perfect for families, entertainers, lifestyle seekers, and those ready to elevate their everyday living.

Whether you're hosting a dinner party, enjoying a quiet evening by the fire, working from home, or taking in the peaceful surrounds, this home effortlessly adapts to your lifestyle with grace and ease.

### Features You'll Instantly Fall For

- Immaculate, spacious residence on a highly coveted Drouin address
- Multiple light-filled living areas offering flexible family living
- A beautifully appointed kitchen with quality appliances, ample storage, and timeless appeal
- Walk-in Wine Cellar – the ultimate luxury for entertainers and connoisseurs
- Elegant formal dining and lounge rooms designed for relaxation and hosting
- Generous bedrooms throughout, perfect for families of all sizes
- Luxurious primary suite with ensuite, walk-in robe, and enchanting French doors leading to the balcony
- Ducted heating and a cosy gas log fire for year-round comfort
- Large remote-control garage plus a 3-bay shed – ideal for vehicles, hobbies, or storage
- Expansive outdoor spaces perfect for entertaining, gardening, and letting children roam freely
- Private, established grounds offering tranquillity and a true country feel
- Moments from Drouin township, quality schools, parks, cafés, transport, and walking tracks

### Lifestyle & Location

Set within a peaceful, family-friendly enclave, this exceptional home captures the essence of country-style living with town convenience. Enjoy lazy weekends at local markets, brunches in

5 BED | 3 BATH | 10 CAR

### PRICE:

\$1,400,000 - \$1,500,000

### OPEN FOR INSPECTION:

N/A

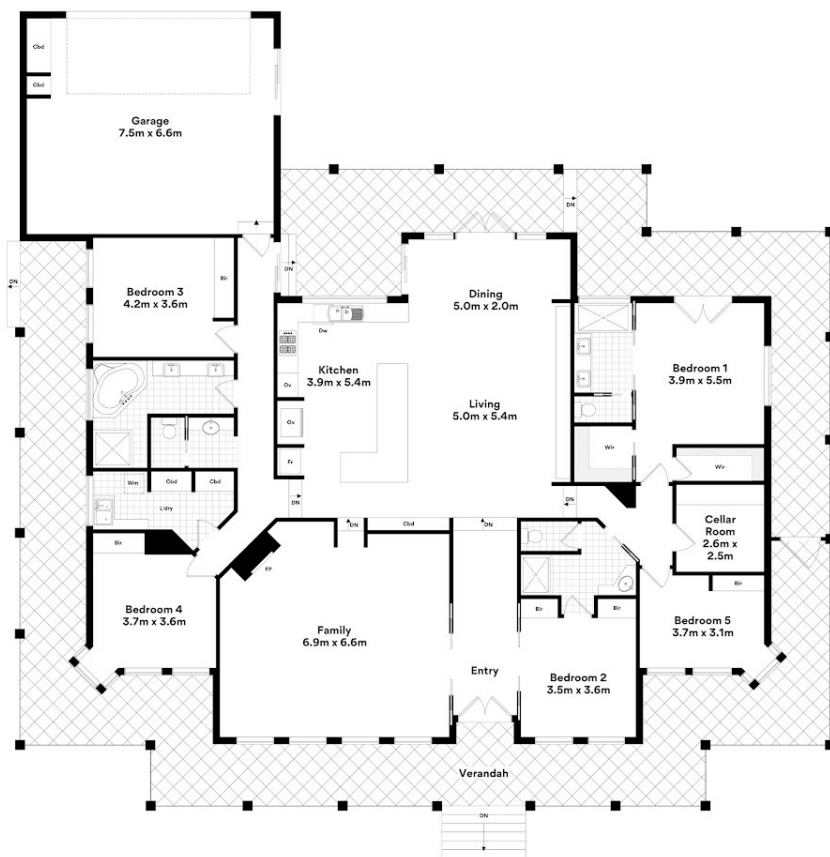


**Tamara Leskie**

**0448809458**

[tamara.leskie@atrealty.com.au](mailto:tamara.leskie@atrealty.com.au)

[www.atrealtypropertyexperts.com.au](http://www.atrealtypropertyexperts.com.au)



## 128 Hopetoun Rd, Drouin

Whilst every attempt has been made to ensure the accuracy of the floorplans contained here, measurements of doors, windows and rooms are approximate and no responsibility is taken for any error, omission or misstatement. These plans are for representation purposes only.

Disclaimer: Please note this floor plan is for marketing purposes and is to be used as a guide only. All dimensions are estimates only and may not be exact measurements.