

Sold

SPACIOUS FAMILY HOME ON A LARGE BLOCK – PLENTY OF ROOM FOR THE BOAT AND OR CAMPERVAN!

4 BED | 2 BATH | 2 CAR

2 Hillview Crescent, Little Mountain, QLD, 4551

Located on a generous 600m² corner block, this Coral-designed family home offers a perfect blend of space, comfort, and practicality. With 275m² under roof, there's room for everyone and everything! The home features four bedrooms and two bathrooms, with plenty of storage options, including a sizable Colourbond shed ideal for the handyman or extra storage.

The property boasts modern touches like ducted air-conditioning, timber flooring, and stylish tiles throughout. With three separate living zones, a covered outdoor entertaining area, solar panels, and solar hot water, this home is built for year-round comfort and eco-friendly living.

The large backyard provides ample space for the kids to play and the family's toys to be stored, including room for a boat or caravan. Situated close to local schools like Meridian State College and Pacific Lutheran College, and conveniently nearby Parklands Shopping Centre, Aldi, Tavern, and medical facilities. Only a 10-minute drive to Currimundi Lake and beach access.

This lovingly cared-for home is ready for your family's next chapter — don't miss out!

Property Features Include:

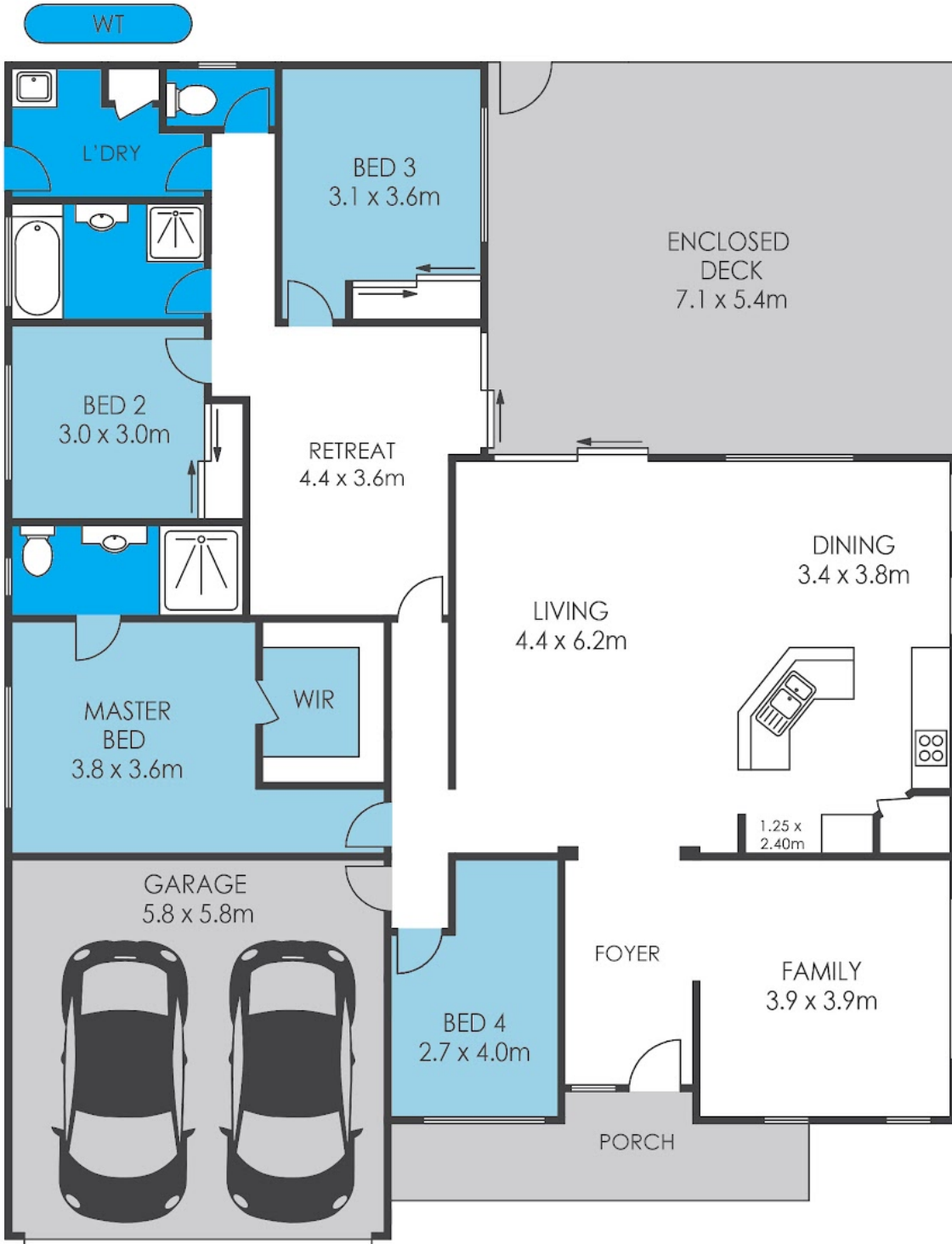
- 4 spacious bedrooms & 2 bathrooms
- Large 2-car garage + extra space for boat or caravan

PRICE:
\$1,125,000

OPEN FOR INSPECTION:
N/A



Greg Pratt
0413 624 308
greg@coastaledgerealestate.com.au



2 Hillview Crescent, LITTLE MOUNTAIN



ARTIST IMPRESSION ONLY: While every attempt has been made to ensure the accuracy of this floor plan's areas and measurements of doors, windows, rooms and all other items are approximate and no responsibility is taken for any error, omission, or mis statement. This plan is for illustrative purposes only and should only be used as such by any prospective purchaser. www.fratterphoto.com

INTERNAL : 203m²
 EXTERNAL : 72m²
 TOTAL : 275m²

