



# SOLD

## EXECUTIVE FAMILY MASTERPIECE

Positioned in the highly sought-after Riverbank Estate, this modern Five-bedroom, two-bathroom two car residence stands out as a true one-of-a-kind home. Impeccably designed and finished with contemporary flair, 35 Boss Drive combines comfort, functionality, and style in one of Caboolture South's most family-friendly locations.

Step inside to discover a spacious open-plan layout enhanced by light-filled interiors and stylish feature walls that add warmth and character. The sleek modern kitchen is a standout, offering quality appliances, a walk-in pantry, plumbed fridge connection, ample storage, and seamless flow to the dining and lounge spaces — ideal for family living and entertaining.

Outdoors, the impressive covered alfresco area features a dedicated outdoor kitchen, perfect for weekend cookouts or gatherings with friends. The 450 m<sup>2</sup> block has been cleverly utilised to provide a low-maintenance lifestyle, established plants, and a shed for added convenience.

The master suite offers a true retreat, complete with ducted air conditioning, a spacious open plan ensuite boasting dual vanities, a freestanding bath, and a large glass window with privacy screening. Three additional bedrooms each feature ceiling fans, plush carpets, built-in wardrobes, and soft natural light — ideal for family or guests.

Perfectly positioned directly opposite a playground, this home embraces Riverbank's outstanding community lifestyle. Residents enjoy access to beautifully maintained parks, riverside walking tracks, and wide-open green spaces — all within minutes of local schools, shopping centers, and major transport links.

### Property Details:

- Land Size – 450m<sup>2</sup>
- House Size - 239m<sup>2</sup>
- Approx. Year Built – 2019
- Builder – Coral Homes

Rental appraisal: \$720–\$750 per week  
Currently owner occupied

### House Features

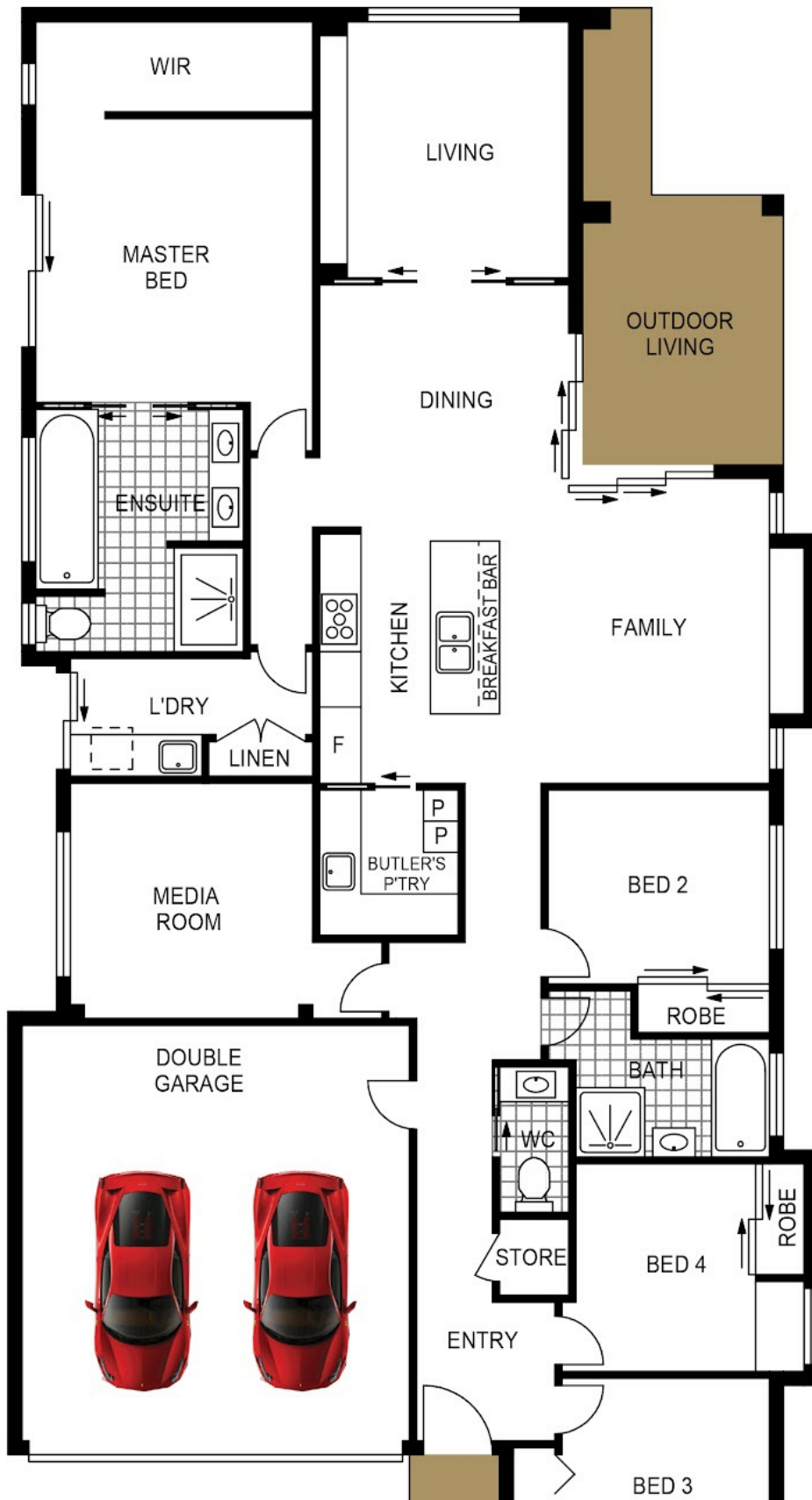
5 BED | 2 BATH | 2 CAR

PRICE:  
\$1,063,000

OPEN FOR INSPECTION:  
N/A



**Mitchell Younger**  
**0488458887**  
mitchell.younger@atrealty.com.au  
[www.atrealty.com.au](http://www.atrealty.com.au)



Disclaimer: Please note this floor plan is for marketing purposes and is to be used as a guide only. All dimensions are estimates only and may not be exact measurements.