



SOLD

ARCHITECT-DESIGNED COASTAL RETREAT WITH PANORAMIC RIVER & MOUNTAIN VIEWS

Beautifully crafted and immaculately presented, this architect-designed home captures the essence of relaxed coastal living — where elegant design meets breathtaking natural surrounds.

Positioned to take full advantage of elevated river, mountain, and reserve views, the home has been thoughtfully created to balance style, comfort, and functionality.

Upstairs, a generous open-plan living area is bathed in natural light, flowing seamlessly onto a wide wraparound balcony — the ideal setting for morning coffees, evening entertaining, or simply soaking in the views. The classic timber kitchen offers stainless steel appliances, gas cook top, ample storage and bench space, connecting effortlessly with the living and dining area, making everyday living both beautiful and practical.

Three spacious bedrooms, each with built-in robes, offer peaceful retreats. High ceilings, and ducted air conditioning elevate the sense of space and calm throughout. The master suite is a highlight — complete with a walk-in robe, ensuite, and private undercover deck overlooking landscaped gardens.

The versatile lower level provides endless possibilities: a welcoming formal entry, guest accommodation, or a relaxed rumpus room with the added bonus of a third bathroom. Additional features include a remote double lock-up garage with internal access, impressive under house storage, 6.6kW solar system, and 8kW ducted air-conditioning unit.

Set on a low-maintenance 698m² block, the property invites you to live life outdoors — stroll across the road to the waterfront reserve for fishing or picnics, or enjoy a five-minute drive to Urunga's charming township, cafés, and pristine beaches.

This home is more than a residence — it's a private coastal haven, designed for those who appreciate space, serenity, and timeless style.

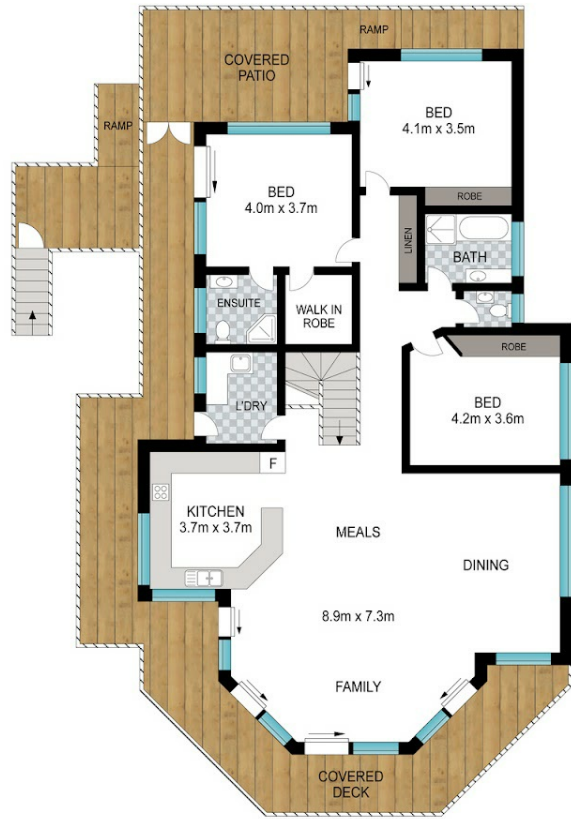
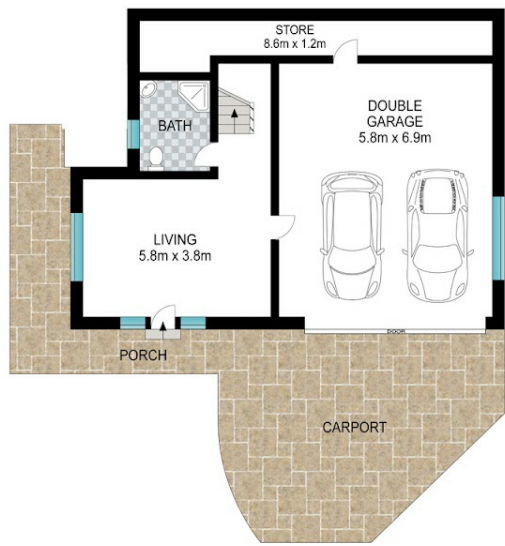
3 BED | 3 BATH | 3 CAR

PRICE:
\$1,005,000

OPEN FOR INSPECTION:
N/A



Bryce Heward
0423691322
bryce.heward@atrealty.com.au
www.atrealty.com.au



0 1 2 3 4 5

Scale in metres. Indicative only. Dimensions are approximate. All information contained herein is gathered from sources we believe to be reliable. However, we cannot guarantee its accuracy and interested persons should rely on their own enquiries.

42 Rosedale Drive, Urunga

INT: 252 m²
EXT: 125 m²



Disclaimer: Please note this floor plan is for marketing purposes and is to be used as a guide only. All dimensions are estimates only and may not be exact measurements.

Bryce Heward
0423691322
bryce.heward@atrealty.com.au
www.atrealty.com.au

