

FOR LEASE

DELUXE TOWNHOUSE IN A STUNNING LOCATION

Embrace sophisticated living in this stunning two-storey townhouse that perfectly combines modern comfort with practical family design. Step inside to discover a home designed for contemporary family life, featuring built-in wardrobes throughout and split system air conditioning and heating ensuring year-round comfort. The well-appointed kitchen comes complete with a dishwasher, island bench and high quality stainless steel appliances, making meal preparation a pleasure rather than a chore.

- Four spacious bedrooms - 2 with ensuite and built in robes
- Three full bathrooms plus downstairs powder room
- Kitchen with ceaserstone benchtops, island bench, dishwasher and high quality stainless steel appliances
- Two living areas
- Split system heating and cooling throughout
- Double garage parking with secure internal access
- Outdoor entertainment area perfect for gatherings and relaxation
- Low maintenance backyard

Brilliantly located near to:

- Premium Glen Waverley railway station within walking distance
- The Glen Shopping Centre featuring David Jones, Target, and diverse dining options
- Schools zoned for: Pinewood Primary School, Brentwood Secondary College
- Monash Aquatic and Recreation Centre for family fitness and leisure
- Century City Walk entertainment precinct with Village Cinemas and dining
- Easy access to Monash University and Melbourne CBD via direct train services

TO INSPECT: Please register your interest by clicking on the Get in touch button and filling out your details. If you are not registered to inspect you will not be notified of any changes to inspection times. ID may be requested at the inspection.

TO APPLY: Applications are accepted through Ignite - click on the Apply button from REA website.

4 BED | 3 BATH | 2 CAR

PRICE:

\$1,150 per week

OPEN FOR INSPECTION:

N/A

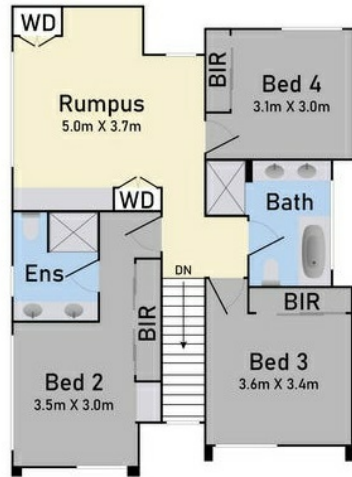


Adi Garcia
0416127211

adi@atrealty.com.au

www.atrealty.com.au

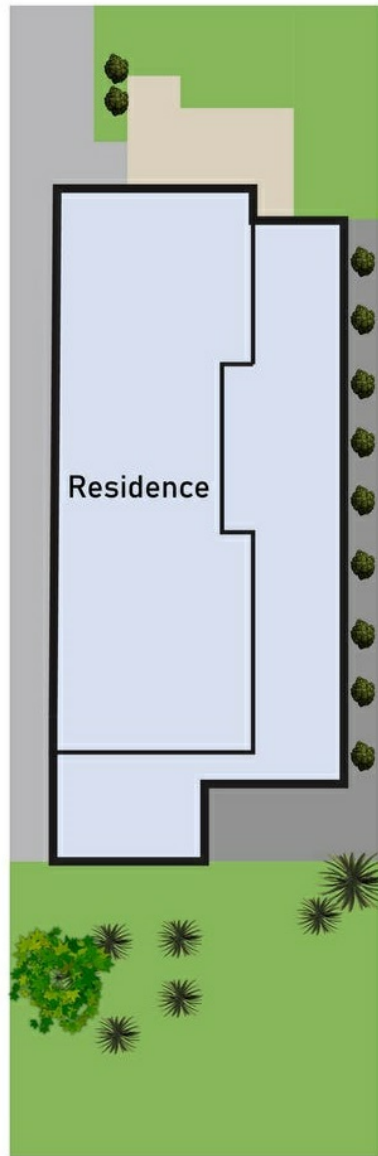
First Floor



Ground Floor



Site Plan



5/36 Ivanhoe St Glen Waverly

* Dimensions are approximate and for illustrative purposes only

Disclaimer: Please note this floor plan is for marketing purposes and is to be used as a guide only. All dimensions are estimates only and may not be exact measurements.