



SOLD

A WARM AND WELCOMING FAMILY HOME IN THE HEART OF TRUGANINA!

Located in the heart of Truganina, this inviting family home offers comfort, space, and convenience for everyday living. Just a short walk from P9 College, it's perfectly suited for families looking for a well-connected and friendly community to call home.

Step inside to discover a bright and open floor plan designed with family life in mind. The living, dining, and kitchen areas flow together, creating a warm space for daily meals, get-togethers, or quiet evenings in. The practical kitchen comes with plenty of storage, quality appliances, and a handy island bench — ideal for busy mornings or relaxed family cooking.

There's room for everyone with several comfortable bedrooms, including a main bedroom with its own ensuite and walk-in robe — the perfect place to unwind after a long day. The home is fitted with ducted heating and a split system for cooling, keeping you comfortable all year round.

Outdoors, the backyard provides a great space for barbecues, kids' playtime, or simply enjoying some fresh air. The location adds even more value, with local parks, shops, and community facilities all close by, making daily errands and weekend outings easy.

Families will also appreciate the short distance to P9 College and easy access to main roads and public transport, ensuring smooth commutes and school runs.

This well-kept home near P9 College is ready for its next family to move in and make it their own. With its practical layout, year-round comfort, and convenient location, it's a wonderful place to settle down and enjoy everything Truganina has to offer.

Currently leased out at \$450 pw on a month to month basis with the option to extend.

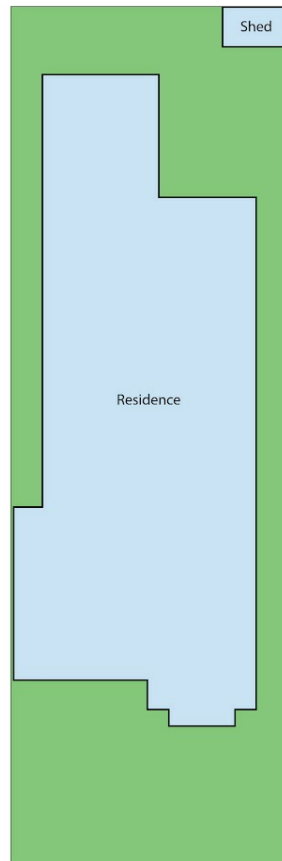
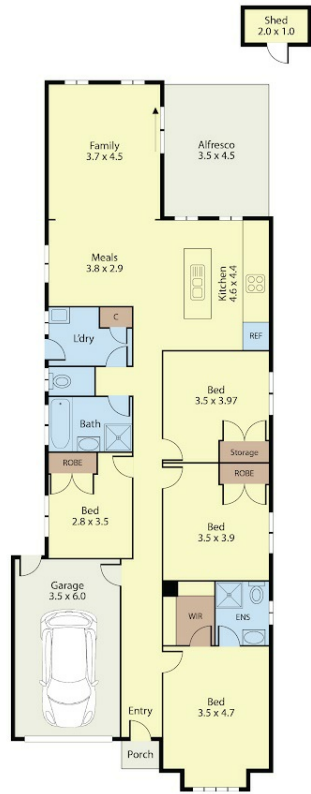
4 BED | 2 BATH | 2 CAR

PRICE:
\$850,000

OPEN FOR INSPECTION:
N/A



Joseph Hanna
0423966320
joseph@atrealty.com.au
www.atrealty.com.au



43 Brigalow Dr, Truganina

Dimensions are approximate and for illustrative purposes only



Disclaimer: Please note this floor plan is for marketing purposes and is to be used as a guide only. All dimensions are estimates only and may not be exact measurements.