



SOLD

GRAND FAMILY HOME IN A EXCLUSIVE ENCLAVE

Grand family home in a exclusive enclave

Perfectly positioned in a peaceful pocket of Woongarra, this master-built six-bedroom, three-bathroom residence combines scale, sophistication, and comfortable living like few others. Behind its impressive street presence, every inch of this home has been designed for families who love space, quality and effortless entertaining.

The heart of the home unfolds to expansive open-plan living, anchored by a huge kitchen with stone bench top. Multiple living zones flow to a covered outdoor entertaining area and a sparkling inground pool, framed by private landscaped surrounds.

Upstairs and down, the accommodation delivers versatility ideal for large or extended families. While a triple garage and ample offstreet parking provides room for all the toys.

A statement in size and comfort, 26 Foxtail Crescent is your chance to secure a home that truly has it all—size, quality and convenience.

- Quiet family friendly enclave
- 6 bedrooms, Three bathrooms, Triple garage with internal access
- Sparkling Inground pool & outdoor entertaining
- Grand proportions, quality finishes throughout
- 3 Large living areas, soaring high ceilings and commanding street appeal
- Close to M1 Motorway, primary & secondary schooling, local shopping centres, gorgeous beaches & lake's plus much more.

Contact Brendan James on 0422 851 384, I Look forward to meeting you at this truly stunning home.

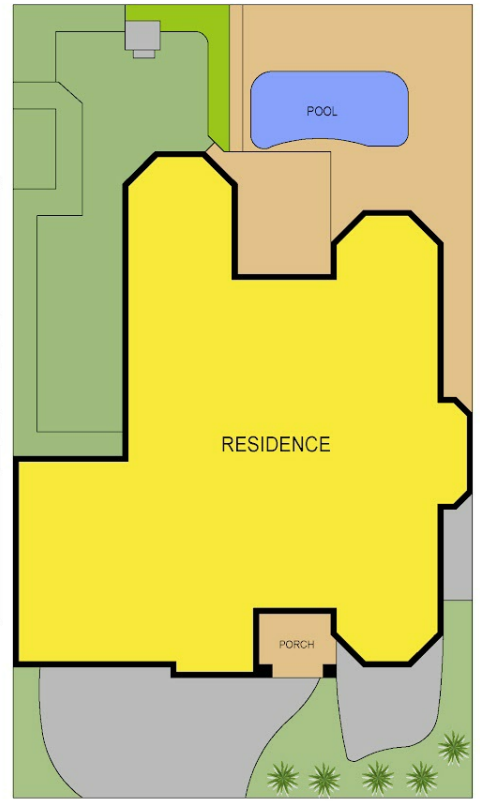
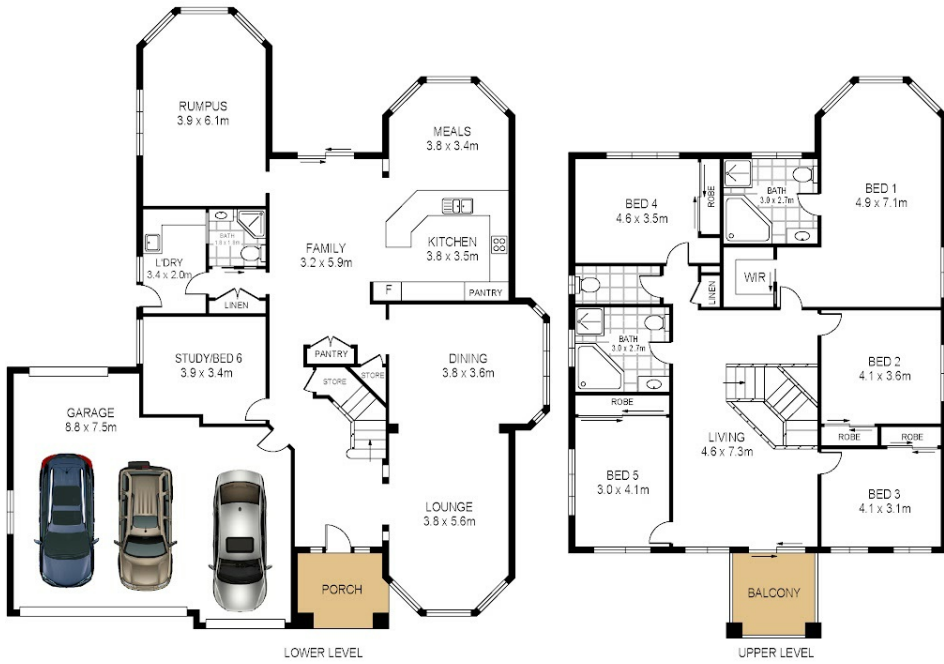
6 BED | 3 BATH | 3 CAR

PRICE:
\$1,500,000

OPEN FOR INSPECTION:
N/A



Brendan James
0422851384
brendanjames@atrealty.com.au
www.atrealty.com.au



26 Foxtail Crescent
Woongarra



Total Internal Floor Area: 350 sqm

Scale in metres. Indicative only. Dimensions are approximate. All information contained herein is gathered from sources we believe to be reliable. However we cannot guarantee its accuracy and interested persons should rely on their own enquiries.



Disclaimer: Please note this floor plan is for marketing purposes and is to be used as a guide only. All dimensions are estimates only and may not be exact measurements.

Brendan James
0422851384
brendanjames@atrealty.com.au
www.atrealty.com.au

