



FOR LEASE

STUNNING FAMILY HOME IN THE HEART OF KAWUNGAN

This beautifully presented four-bedroom home, 16 Abbey Court, offers the perfect blend of comfort, space, and convenience in one of Hervey Bay's most sought-after suburbs. Set on a generous 785m² allotment, the home features four bedrooms with built-in wardrobes, including a master suite with an ensuite. The kitchen is equipped with a dishwasher and ample storage, flowing seamlessly to open-plan living and dining areas. A separate rumpus room provides the ideal space for family entertainment. Split-system air conditioning ensures year-round comfort.

Enjoy outdoor living with a large undercover entertaining area overlooking the fully fenced yard – perfect for kids, pets, or weekend barbecues. Parking and storage are well catered for with a remote double garage, four-car carport, and multiple sheds.

Ideally located within walking distance to Kawungan State School and just minutes to major shopping centres, hospital & medical precincts, and Hervey Bay's stunning beaches, this home offers the ultimate family lifestyle.

Property Features:

- Four bedrooms with built-in wardrobes
- Two bathrooms including ensuite to master
- Separate rumpus room
- Modern kitchen with dishwasher
- Split-system air conditioning
- Double garage + 2-bay shed
- Fully fenced yard with covered entertaining area

This quality home delivers the perfect balance of suburban tranquility and coastal convenience – ready for you to move in and enjoy.

4 BED | 2 BATH | 4 CAR

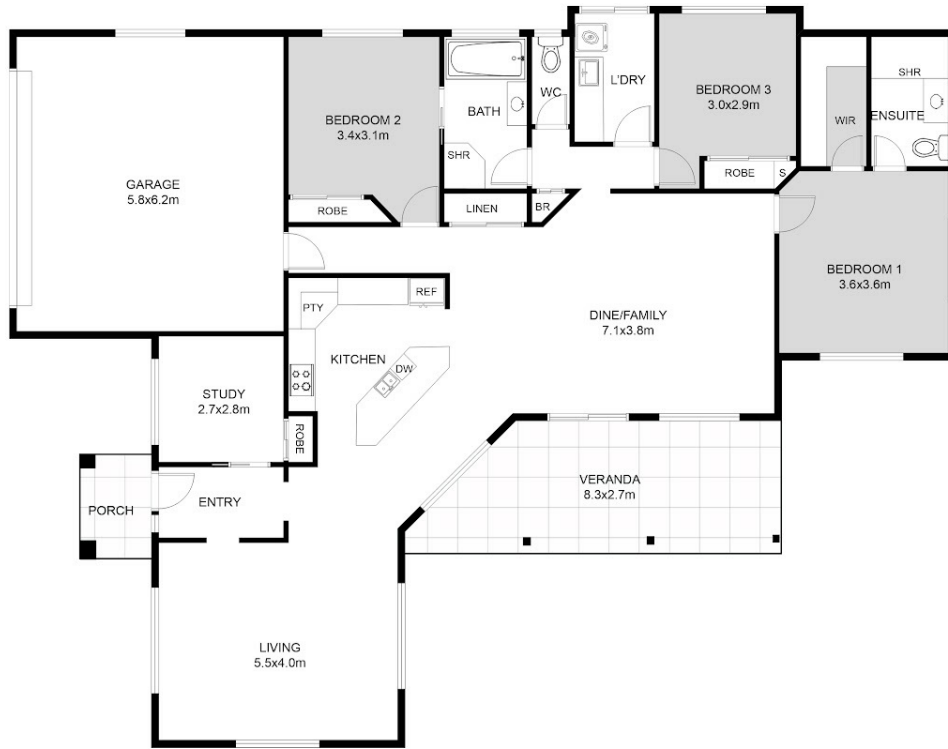
PRICE:
\$770 per week

OPEN FOR INSPECTION:
N/A



Calvin Marais
0421517941

calvin.marais@atrealty.com.au
www.atrealty.com.au



FLOOR PLAN

This floor plan including furniture, fixture measurements and dimensions are approximate and for illustrative purposes only. BoxBrownie.com gives no guarantee, warranty or representation as to the accuracy and layout. All enquiries must be directed to the agent, vendor or party representing this floor plan.



TOTAL AREA : 222.16m²

16 Abbey Court Kawungan

Disclaimer: Please note this floor plan is for marketing purposes and is to be used as a guide only. All dimensions are estimates only and may not be exact measurements.