



FOR SALE

MONTAGNE - A RESIDENCE OF RARE DISTINCTION

WILL SUIT BUYERS MID \$2M's

Please contact the Selling Agents to register your viewing

Montagne (noun) – French for “mountain” or “hill”: a symbol of strength, elevation and achievement.

True to its name, ‘Montagne’ stands as a testament to the owners’ remarkable journey in creating a residence of exceptional scale and beauty.

Constructed by Manor Homes in 2009 and nestled within the prestigious Churchman Brook Estate, this magnificent five-bedroom, three-bathroom residence rises gracefully above its surroundings, capturing sweeping views and an undeniable sense of presence. Embraced by lush, sculpted gardens that unfold in layers of colour and texture—framed by manicured lawns, ornamental plantings, a kitchen garden and tranquil garden vistas that change beautifully with the seasons. Complemented by two double garages, this remarkable estate embodies timeless elegance, architectural mastery, and the serenity of refined Bedfordale living.

GRAND ENTRANCE

Beyond the grand double solid timber doors lies an impressive foyer where soaring ceilings, ornate cornices and a dazzling chandelier create an immediate sense of opulence. A graceful arched feature adorned with decorative corbels frames the entry to the extensive central hallway, establishing a refined introduction to the home’s timeless elegance and architectural grandeur.

MASTER RETREAT

Spacious and light-filled, this master retreat will delight even the fussiest of buyers!

- 2.8m high ceiling
- Decorate cornices with matching decorative tall skirting boards
- Solid Karri floorboards
- Large windows dressed with custom made window treatments & sheers
- Double glass French doors open to tiled alfresco with garden views, enhancing the rooms sense of openness
- Elegant, sculpted metal chandelier with frosted glass shades

5 BED | 3 BATH | 4 CAR

PRICE:

CONTACT AGENT

OPEN FOR INSPECTION:

N/A

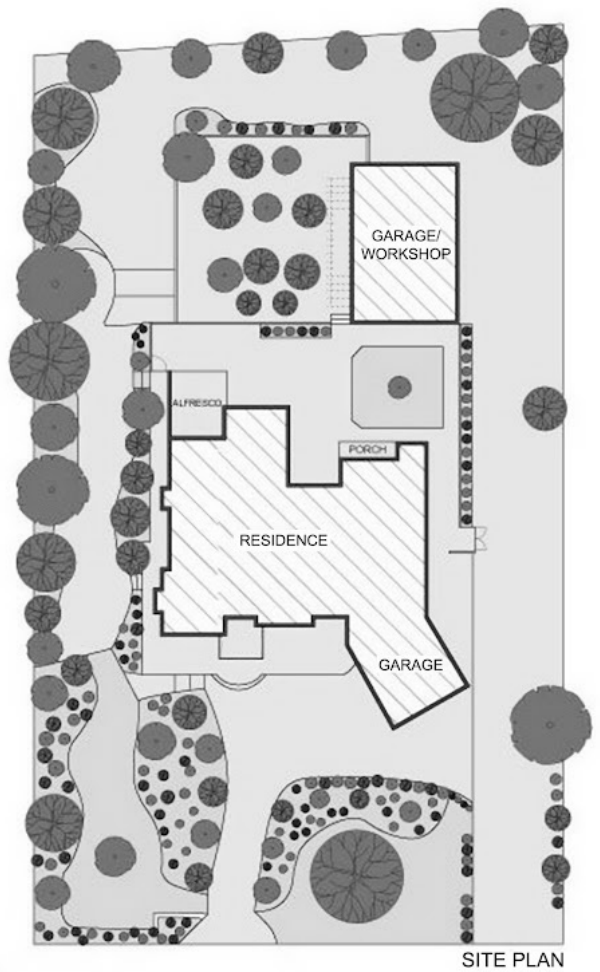
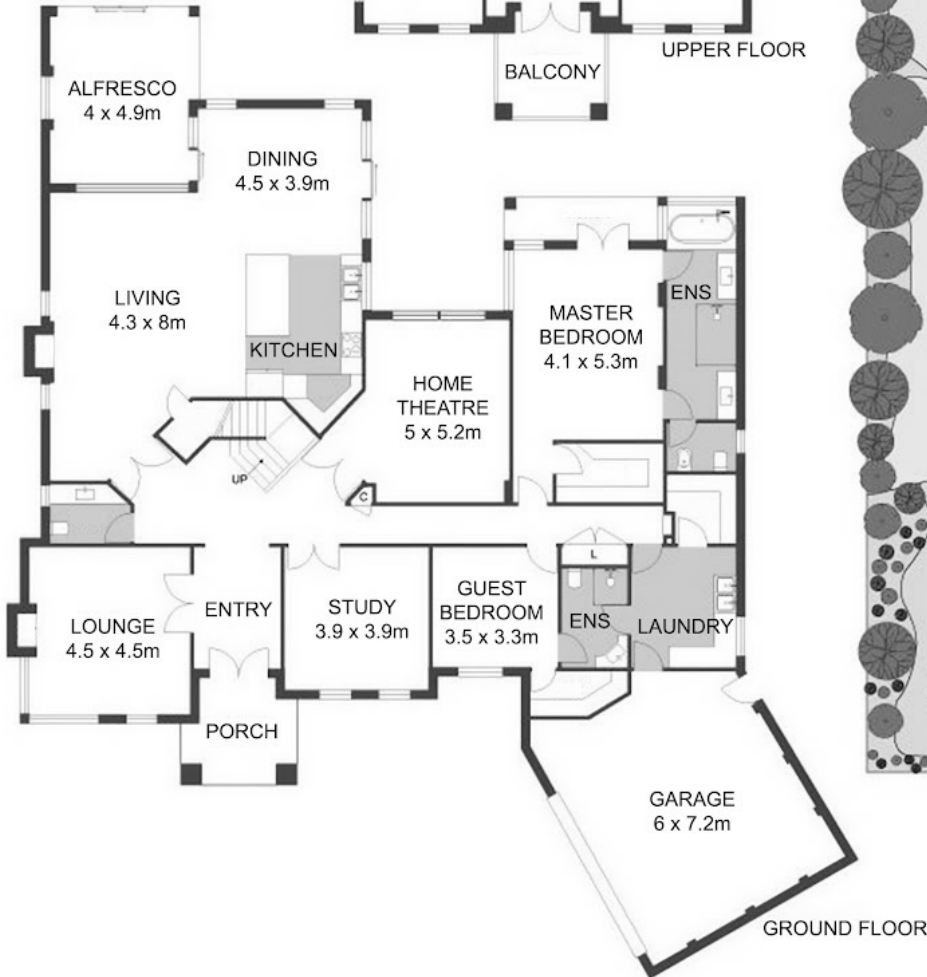


Jill Groves | Chloe Leggett Team

0408765240

jillgroves@atrealty.com.au

www.atrealty.com.au



Disclaimer: Please note this floor plan is for marketing purposes and is to be used as a guide only. All dimensions are estimates only and may not be exact measurements.

@realty 8 Skewes Way, Bedforddale

Jill Groves | Chloe Leggett Team
0408765240

jillgroves@atrealty.com.au

www.atrealty.com.au

Not to scale • All measurements are approximate • Drawn for presentation purposes only

@realty