



# SOLD

## IDEAL STARTER, ENDLESS OPPORTUNITIES

Set on a spacious 1135m<sup>2</sup> block, this charming property at 34 Main Neerim Road, Neerim South offers family living with an abundance of outdoor space, multiple living zones, plenty of shedding, and all in a quiet country town. With 3 bedrooms, 1 bathroom, and a versatile layout, this home is perfect for first-home buyers, downsizers seeking space, or investors looking for a solid future development opportunity.

Inside, the home features a formal living/meals area, complemented by a separate family area—ideal for flexible everyday living. The kitchen is equipped with a dishwasher, under bench electric oven, and gas hotplates, making meal preparation effortless. A cosy wood fire heater keeps the home warm during the cooler months, supported by the solar panels to help keep energy costs low.

All three bedrooms include built-in robes, and the central family bathroom offers a single shower. The laundry provides the convenience of a second toilet.

Step outside to a rear deck, perfect for simply relaxing while overlooking the expansive, fully fenced yard—ideal for kids, pets, and gardening enthusiasts.

For those needing storage or workshop space, this property delivers in abundance:

- Double car shed with power
- 3-bay open shed
- Workshop
- Garden shed
- Side access for vehicles, trailers, or equipment

Property Features:

- 3 bedrooms, all with built-in robes
- 1 family bathroom + second toilet in laundry
- 2 Separate living zones
- Dishwasher, under bench electric oven & gas hotplates
- Wood fire heater
- 21 Solar panels
- Rear deck overlooking large yard
- Fully fenced 1135m<sup>2</sup> allotment

A rare opportunity to secure a well established home on a generous block in the heart of Neerim South. Enquire today—this one won't last long!

3 BED | 1 BATH | 4 CAR

PRICE:  
\$540,000

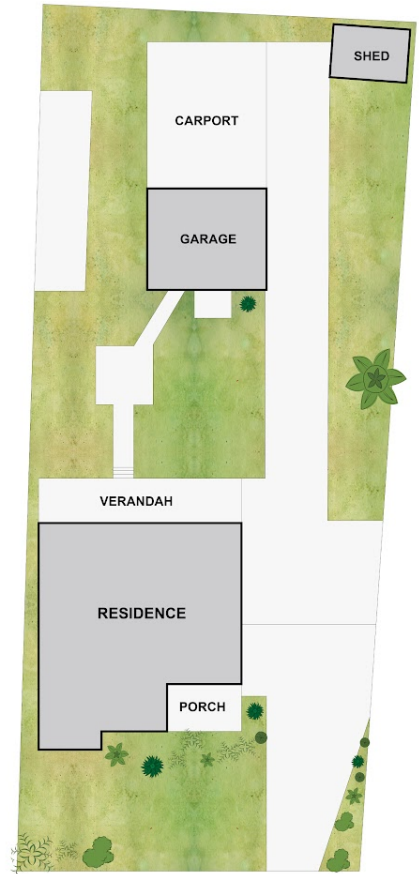
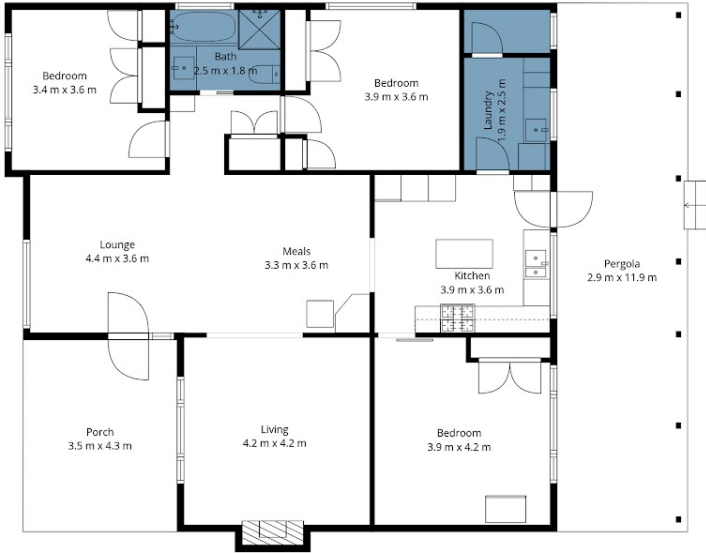
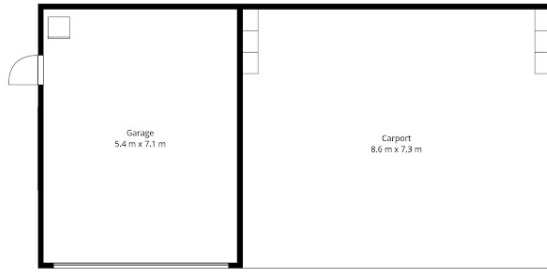
OPEN FOR INSPECTION:  
N/A



**Jeff Dalzotto**  
0411601046

jeffd@atrealty.com.au

[atrealtypropertysalesgippsland.com.au](http://atrealtypropertysalesgippsland.com.au)



### 34 Main Neerim Road, Neerim South

Whilst every attempt has been made to ensure the accuracy of the floorplan contained here all measurements are approximate and are for illustration purposes only. No responsibility is taken for any error, omission or misstatement



Disclaimer: Please note this floor plan is for marketing purposes and is to be used as a guide only. All dimensions are estimates only and may not be exact measurements.