

**SOLD**

## QUALITY NEW HOME WITH EXPANSIVE HORIZON VIEWS

This quality new home is ready for you to move in. Set on an elevated 601 sqm block, this well designed 4-bedroom, 2-bathroom family home has north-east horizon views out to the hills surrounding Brisbane. Come and feel the breezes.

Designed for the modern family, it has a spacious master suite with adjoining dressing room and bathroom on one wing, plus three further bedrooms with built-ins and access to the second bathroom on the other wing. The heart of the home is open plan with a comfortable lounge area opening onto the balcony perfect for family gatherings, while the generous open kitchen comes equipped with quality built-in Omega appliances. The large YDL Stone Porcelain benchtops offer endless bench space, while the double sinks, dishwasher, and loads of drawer and cabinet storage add to the functionality of this well designed kitchen.

Features include:

- Ducted heating and cooling systems with individual room temperature controls
- Remote-controlled double garage with secure parking
- High ceilings, good cross ventilation, down lighting
- Private balcony overlooking broad north-east vistas

Deebing Heights represents one of Ipswich's most sought-after growth corridors, positioned within the masterplanned Ripley Valley development. This family-friendly suburb offers the perfect balance of semi-rural tranquillity and urban convenience:

- Quick access to Brisbane and the Gold Coast via Western Transport Corridor
- Minutes to major shopping centres and amenities
- 8 Minutes to Ipswich Central and 3 only Minutes to Yamanto Shopping Precede
- Deebing Heights State School and Bremer Pony Club are around the corner
- Easy walk to school bus stop for local State and private schools

This is more than just a house – it's a lifestyle opportunity in one of Queensland's most promising residential areas. A new home, ready for you to move in now.

Don't hesitate to call if you wish to book a private inspection.

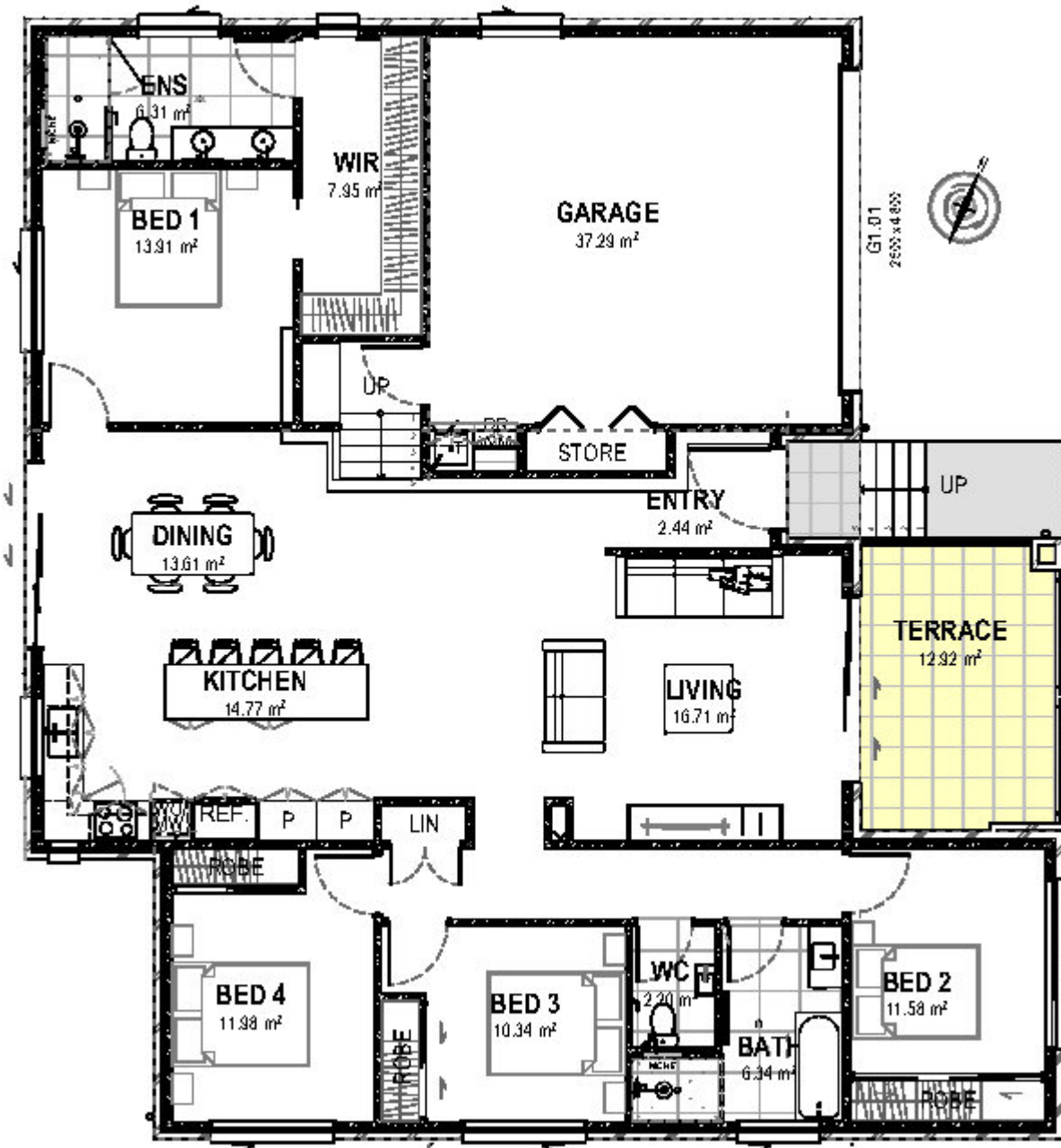
**4 BED | 2 BATH | 2 CAR**

**PRICE:**  
\$980,000

**OPEN FOR INSPECTION:**  
N/A



**Patti Harriss**  
**0418786696**  
patti@atrealty.com.au  
[www.atrealty.com.au](http://www.atrealty.com.au)



Disclaimer: Please note this floor plan is for marketing purposes and is to be used as a guide only. All dimensions are estimates only and may not be exact measurements.