



**SOLD**

## MODERN TENANTED APARTMENT NEAR NIGHTCLIFF FORESHORE

Located in the sought-after suburb of Coconut Grove, this modern apartment offers relaxed coastal living just moments from the iconic Nightcliff foreshore. Whether it's evening walks along the beach or enjoying Darwin's famous sunsets, you'll love having these lifestyle conveniences right on your doorstep.

Set within a well-maintained complex, residents enjoy access to a sparkling pool, the perfect spot to unwind and cool off after a long day. With contemporary finishes, spacious interiors, and a breezy tropical feel throughout, this home is ideal for those seeking comfort and convenience in a fantastic location.

### Property Highlights:

- Spacious bedrooms with built-in robes
- Large open-plan living and dining area
- Modern, functional kitchen
- Separate internal laundry
- Fully air conditioned
- Generous balcony for outdoor relaxation

Offering easy access to shops, cafes, schools, and transport, this property presents excellent value for both homeowners and investors alike. Experience the best of Darwin living in this inviting Coconut Grove apartment.

### Additional Information:

- Year Built: 2015
- Status: Tenanted – ideal for investors seeking immediate rental income
- Current Rent: \$580 per week
- Lease Ending: 28/2/2026
- Body Corp Manager: North Management
- Total Body Corporate Fees (approx.): \$1400 per quarter
- Darwin City Council Rates (approx.): \$1,420 per year

Contact me today at 0417508800 or [nicolewheeler@atrealty.com.au](mailto:nicolewheeler@atrealty.com.au) to schedule a private

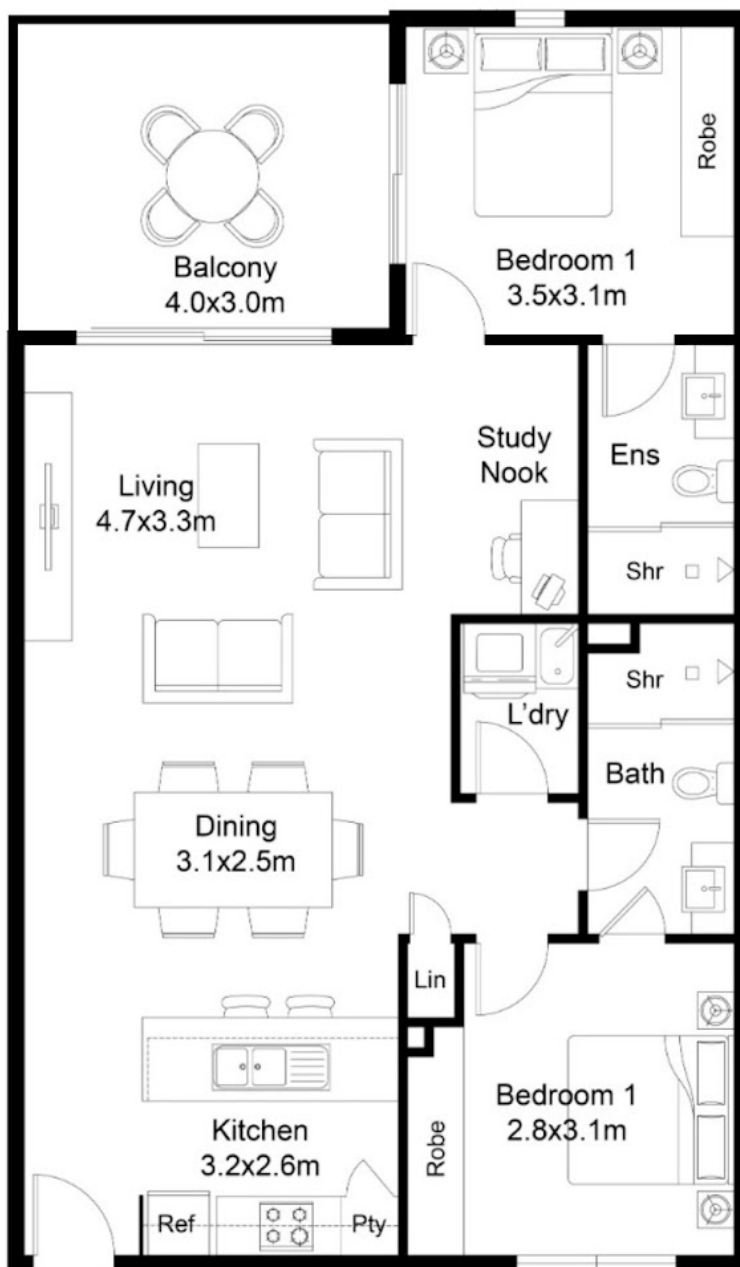
**2 BED | 2 BATH | 0 CAR**

**PRICE:**  
\$425,000

**OPEN FOR INSPECTION:**  
N/A



**Nicole Wheeler**  
**0417508800**  
[nicolewheeler@atrealty.com.au](mailto:nicolewheeler@atrealty.com.au)  
[www.atrealty.com.au](http://www.atrealty.com.au)



212/15 MUISGRAVE CRESCENT COCONUT GROVE NT 0810

Disclaimer: Please note this floor plan is for marketing purposes and is to be used as a guide only. All dimensions are estimates only and may not be exact measurements.