



FOR SALE

ONLY A SHORT DRIVE TO BEACHES

This is a home that invites you to slow down, reconnect, and savour the simple moments. Set on 1ha (2.47ac) of serene native surroundings, this charming two-storey, two-bedroom, two-bathroom home offers the perfect blend of character, comfort, and tranquil rural living — all just a short drive to the stunning beaches of Scotts Head.

Step into a bright, open living space where large windows frame the lush treetops and invite the outdoors in. The well-appointed kitchen flows into the dining and lounge area, creating a warm, connected living area.

The main bedroom and bathroom are beautifully presented, and with the inclusion of a reverse-cycle air-conditioning, dishwasher, blinds, and modern finishes throughout the home, it feels very comfortable and welcoming.

Throw open the doors to the elevated wrap-around verandah, your morning coffee, afternoon wine, and sunset-watching haven. Sit back, breathe deeply, and enjoy the soft soundtrack of nature.

The lower level offers its own comfortable living area, bedroom with soft carpet, split-system air-conditioning, bathroom, laundry, and excellent storage. A practical and private retreat for guests, teenagers, extended family, or Airbnb potential.

Outside, the property unfolds into a peaceful landscape of established beautiful native gardens, tall trees, two dams- one spring-fed, and open space to explore, grow, or simply unwind.

Double carport, 2x sheds, and plenty of room for hobbies or weekend projects add to the easy-going lifestyle.

Call Jennifer today on 0409 765 032 for more information or to arrange your private inspection.

2 BED | 2 BATH | 2 CAR

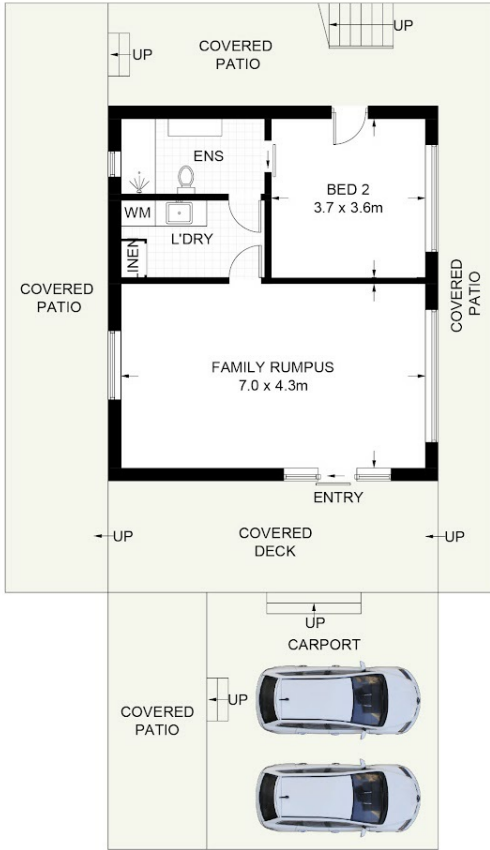
PRICE:
Offers Invited

OPEN FOR INSPECTION:
N/A

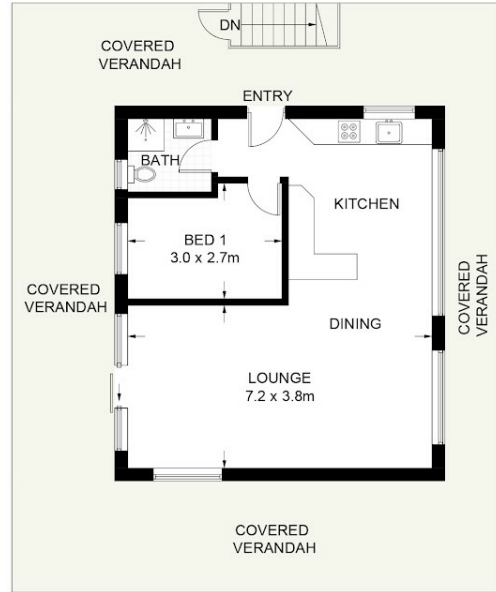


Jennifer Miller
0409765032
jmiller@atrealty.com.au
www.atrealty.com.au

Approximate Gross Internal Area = 116.3 sq m



GROUND FLOOR



FIRST FLOOR

696 Grassy Head Road, Way Way NSW 2447

DISCLAIMER: PLANS SHOWN ARE FOR PRESENTATION PURPOSES AND ARE NOT PART OF ANY LEGAL DOCUMENT. ALL MEASUREMENTS AND FIGURES ARE APPROXIMATE.



Disclaimer: Please note this floor plan is for marketing purposes and is to be used as a guide only. All dimensions are estimates only and may not be exact measurements.