

# SOLD

## FANTASTIC BUYING, REFURBISHED, MOVE-IN READY & NEAT AS A PIN

Escape the mainland hustle and embrace relaxed coastal living with this charming two-bedroom home on Lonicera Street, Macleay Island. Positioned on a generous 587m<sup>2</sup> block backing onto peaceful community parklands, this property offers the perfect blend of tranquillity, space, and lifestyle.

### KEY PROPERTY FEATURES

- Two well sized bedrooms both air-conditioned and freshly painted
- The large bathroom is well appointed, light and airy
- Open-plan living and dining area with bi-folds opening up to a separate lounge zone
- The kitchen has been renovated with new appliances with a lovely outlook to the gardens
- Single carport for secure parking and plenty of room to add additional parking
- Fully fenced so this property is great for children and pets
- Air conditions rooms with fans and dual day/night block fans
- Separate laundry that leads outside to the patio and grassed grounds
- The exterior has also been repainted and the gardens are designed to be easy care
- The block is flat and spacious with room to expand or landscape
- Ideal for first-home buyers, downsizers, or those seeking a serene holiday retreat, this well-presented and recently refurbished home invites you to enjoy everything that makes island living so special.

### LIFESTYLE & POSITION

Macleay Island is celebrated for its natural beauty and strong community spirit. Wake up to the sounds of native parrots and bush stone curlews, stroll through protected mangrove areas and littoral rainforest, or spend your days fishing, kayaking, and exploring scenic walking tracks.

### ESSENTIAL AMENITIES CLOSE BY

- Regular passenger ferries and vehicle barge to Redland Bay
- Local primary school and community facilities
- Short ferry ride to Victoria Point for shopping, dining, and services

### ARRIVING BY FERRY?

- We're here to help - Complimentary pickup and return to the Macleay Island Ferry Terminal

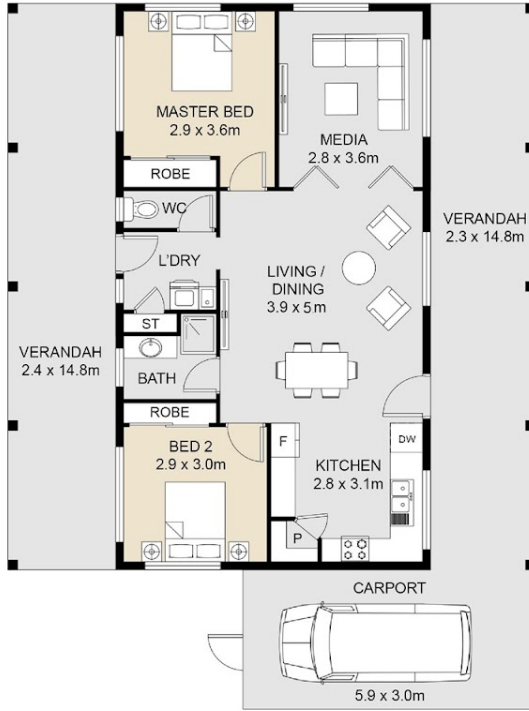
2 BED | 1 BATH | 1 CAR

PRICE:  
\$460,000

OPEN FOR INSPECTION:  
N/A



**Gaylia Griffiths**  
**0419879037**  
gayliagriffiths@atrealty.com.au  
[www.atrealty.com.au](http://www.atrealty.com.au)



APPROXIMATE AREAS:

HOUSE AREA	81m <sup>2</sup>
VERANDAH AREA	57m <sup>2</sup>
CARPORT AREA	18m <sup>2</sup>
TOTAL AREA	156m <sup>2</sup>



37 Lonicera Street Macleay Island

Disclaimer: Please note this floor plan is for marketing purposes and is to be used as a guide only. All dimensions are estimates only and may not be exact measurements.