



FOR SALE

SPACIOUS HOME WITH POOL, IN QUALITY CUL-DE-SAC

Set in a quiet, high-quality cul-de-sac in sought-after East Ballina, this spacious family home offers comfort, practicality and a lifestyle that's easy to love. Positioned on a generous 758m² corner block with excellent side access and a dedicated spot to park a caravan, it is a home designed to work beautifully for everyday living.

Inside, there is space for everyone. Five bedrooms, two separate living areas, and a well-planned kitchen overlooking the pool that naturally becomes the heart of the home. The layout is ideal for families who value both together-time and room to spread out, with the bedroom wing tucked away for peace and privacy.

Outdoors, the block provides plenty of flexibility with the sparkling in-ground pool, secure yard for children and pets to play, a double garage, two garden sheds, and the added bonus of extra parking or storage for the caravan or trailer.

The location is another highlight. Just around the corner is the golf course, and nearby walking pathways make it simple to reach local shops, parks and everyday conveniences. It is a neighbourhood known for its calm, friendly feel and strong sense of community.

This is a home with everything a family could hope for. Space, comfort and a lifestyle that is both relaxed and incredibly convenient. Contact Robyn Hunt Real Estate today on 0448 448 758 to arrange your private inspection.

Disclaimer:

* Whilst every effort has been made to ensure the accuracy of these particulars, no warranty is given by the vendor or the agent as to their accuracy. Interested parties should not rely on these particulars as representations of fact but must instead satisfy themselves by inspection or otherwise.

5 BED | 2 BATH | 2 CAR

PRICE:

Contact Agent

OPEN FOR INSPECTION:

N/A



Robyn Hunt

0448448758

robyn@atrealty.com.au

www.atrealty.com.au

6 Peppercorne Place, East Ballina



5



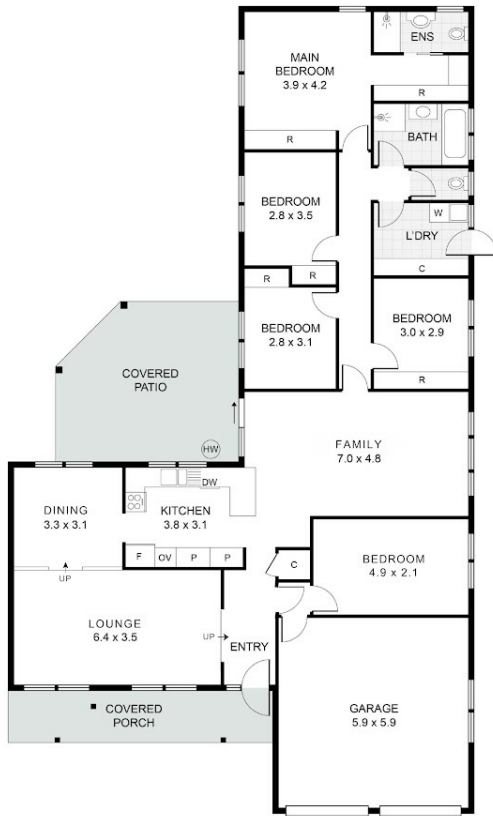
2



2

APPROXIMATE AREAS

INTERNAL: 219m²
EXTERNAL: 41m²



RESIDENCE : 219m²



SITE PLAN

Disclaimer: Please note this floor plan is for marketing purposes and is to be used as a guide only. All dimensions are estimates only and may not be exact measurements.