



## FOR SALE

### MOVE IN NOW – NO WAITING FOR A BUILD! NEAR-NEW HOME READY FOR YOU \$945,000.00

Experience resort-style living in this beautifully designed 239.35m<sup>2</sup> perimeter home at GemLife Moreton Bay Over 50's Lifestyle Resort.

Only 1 year old, this thoughtfully crafted residence offers two spacious bedrooms plus a versatile multi-purpose room, each featuring either built-in or walk-in storage.

The master suite includes a generous walk-in robe and a private ensuite with double vanities, while the second bathroom is finished with floor-to-ceiling tiles. A sleek, modern kitchen showcases premium Smeg appliances, soft-close cabinetry, an integrated dishwasher, multi tap, microwave, and a large walk-in pantry with adjustable shelving.

Additional highlights include hybrid flooring throughout the main living areas, a double garage with epoxy-coated flooring and remote-controlled access, and a large alfresco area complete with remote Zipscreen blinds—perfect for entertaining. Enjoy the comfort of zoned ducted air-conditioning, solar power, a security system, water tank, and ceiling fans in every room.

#### Home highlights:

- Bellamy design
- Total living area of 239.35m<sup>2</sup>
- Just 1 year old
- Perimeter site with low-maintenance artificial turf
- Two bedrooms plus a multi-purpose room with built-in cupboard
- Master bedroom with separate walk-in robe
- Second bedroom with walk-in robe
- Ensuite with double vanities and recessed shaving cabinet
- Modern kitchen with Smeg appliances, soft-close drawers, integrated dishwasher, multi tap, and microwave
- Spacious walk-in pantry with adjustable shelving
- Double garage with epoxy floor, remote door, and storage cupboard
- Hybrid flooring to living zones, carpet to bedrooms and MPR
- Two fully tiled bathrooms with heat lamp and exhaust fan
- Separate laundry with ample storage

2 BED | 2 BATH | 2 CAR

#### PRICE:

GEMLIFE Moreton Bay Resort  
\$945,000

#### OPEN FOR INSPECTION:

N/A

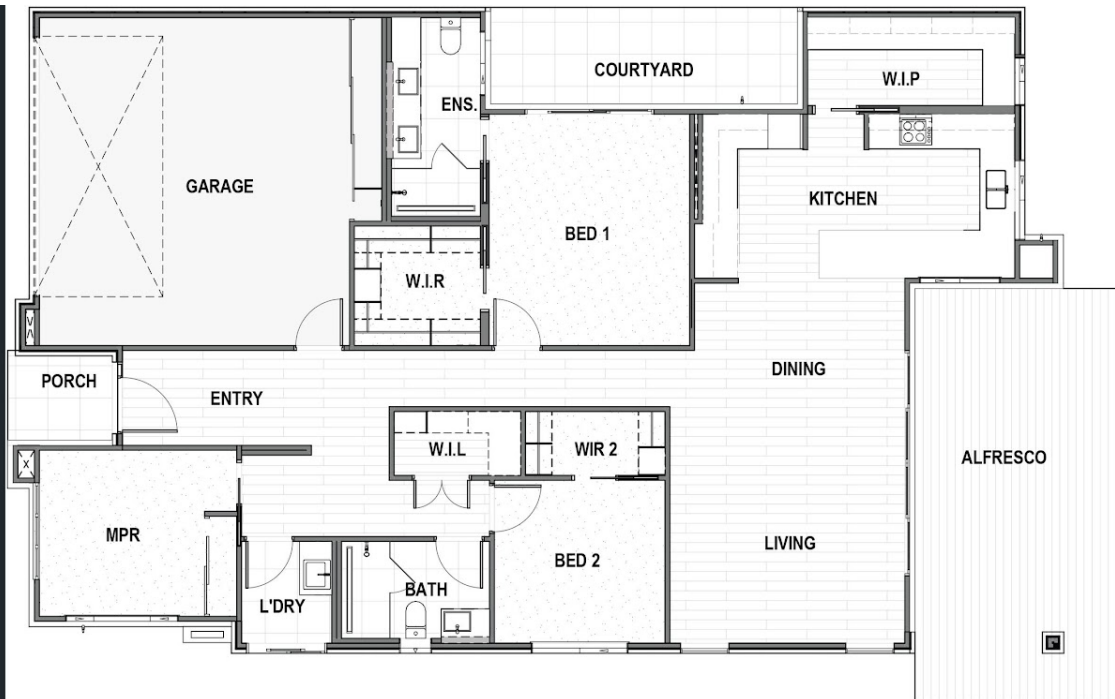


**Michelle Rochow**

**0402002245**

michelle.rochow@atrealty.com.au

[www.atrealty.com.au](http://www.atrealty.com.au)



Disclaimer: Please note this floor plan is for marketing purposes and is to be used as a guide only. All dimensions are estimates only and may not be exact measurements.