

SOLD

IMMACULATE OWNER-OCCUPIED HOME MOVE-IN READY WITH ENTERTAINER'S YARD

Welcome to 28 Forgan-Smith Street, Collingwood Park, Spacious Brick Family Home on a Large Block with Air-Conditioning + Entertainer's Backyard

Set on a quiet, elevated street with scenic outlooks, this solid brick family residence has been designed for complete comfort, versatility, and lifestyle. Every detail reflects the owners' care and attention, from its multiple living zones to its fully air-conditioned interiors and beautifully landscaped outdoor spaces.

Offering four large bedrooms plus a dedicated office, this home provides ample room for families and professionals alike. A generous separate living area and a distinct dining space create flexibility for entertaining and everyday living. The modern U-shaped kitchen features 2-pac cabinetry, extensive storage, an electric cooktop, and a servery window that opens to the dining area.

Split-system air conditioning is installed in key bedrooms and living areas for comfortable living year-round. The master suite features an en-suite, built-in robe, and private outlook, while a spacious media room provides the perfect family retreat.

Outdoors, enjoy a well-maintained backyard with a built-in brick BBQ, lush lawns, stunning views, and multiple storage sheds, with ample space for a future pool. This property truly embodies relaxed family living with all the modern comforts in place.

Key Features

- 4 bedrooms plus a dedicated office/study
- Air-conditioning in every room, including bedrooms & living areas
- Master suite with ensuite, walk-in robe, and A/C
- Separate large living and formal dining areas
- Modern U-shaped kitchen with electric cooktop and 2-pac cabinetry
- Two living zones, including a media room
- Solar panels for energy efficiency
- Covered alfresco area with built-in brick BBQ and pizza oven
- Manicured gardens, multiple storage sheds, and room for a pool

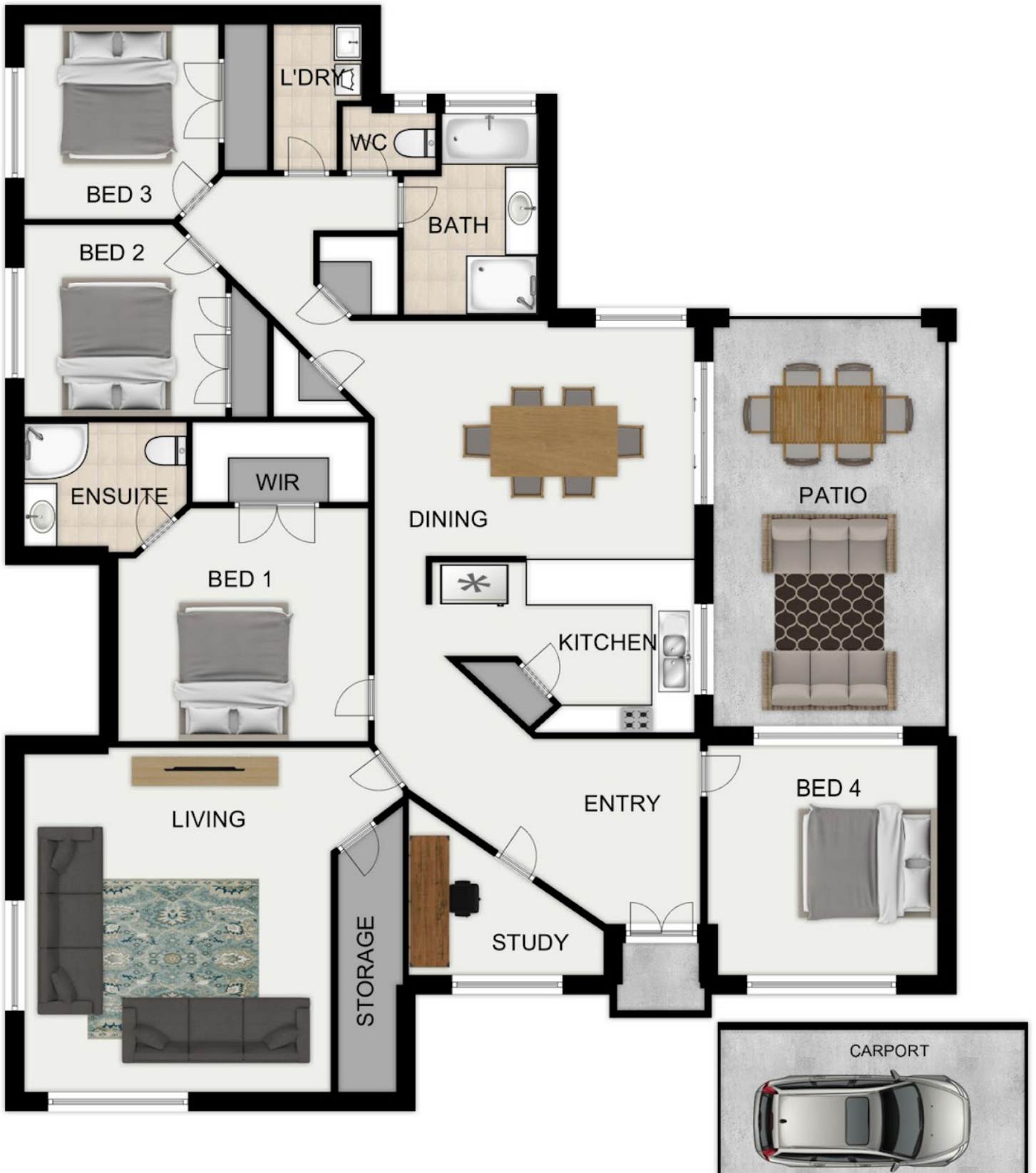
4 BED | 2 BATH | 1 CAR

PRICE:
\$975,000

OPEN FOR INSPECTION:
N/A



Supreet Singh
0451594888
supreet.singh@atrealty.com.au
www.atrealty.com.au



Disclaimer: Please note this floor plan is for marketing purposes and is to be used as a guide only. All dimensions are estimates only and may not be exact measurements.